

TYPE A

Ref.: 156217



ISO/PAS 11154



CITY CRASH TEST



n° 217

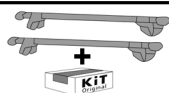
Seat Ibiza V



5



06/2008->



5 kg + xx Kg = 75 kg max

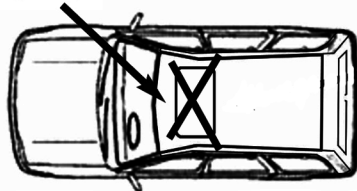
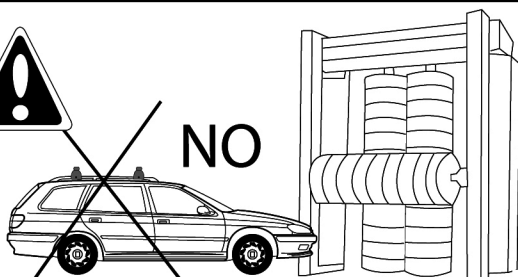
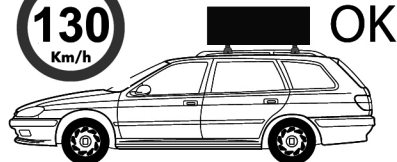
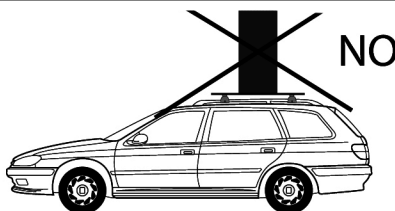
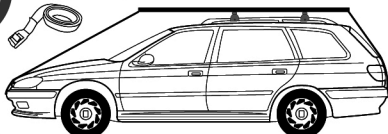
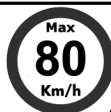
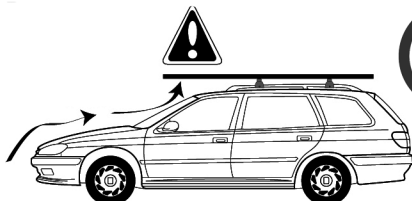
Ne pas dépasser la charge maximale des barres. Ne pas dépasser la charge maximale indiquée par le constructeur du véhicule

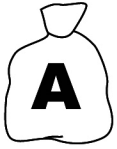
Non superare il carico massimo delle barre portatutto. Non superare il carico massimo indicato dal costruttore del veicolo

Carga máxima admisible indicada en la caja de las barras de techo. No exceda la carga máxima permitida por el fabricante del vehículo.

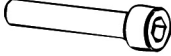
Maximum allowable load indicated on the box of roof bars. Do not exceed the maximum load allowed by the vehicle manufacturer.

Maximal zulässige belastung angegeben auf der box der dachreling. Überschreiten sie nicht die maximale belastung durch den fahrzeughersteller zugelassen.

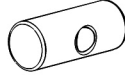




M6X55



x4



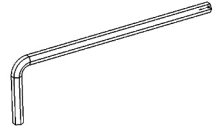
162100001

x4



659306

x4

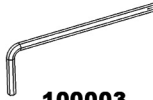


100005

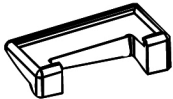
x1



M6x15
x2

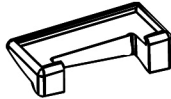


100003
x1



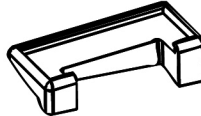
x1

1120201



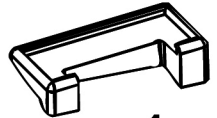
x1

1120202



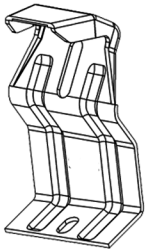
x1

1120203

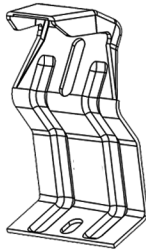


x1

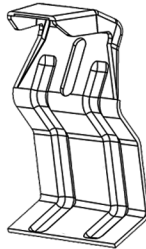
1120204



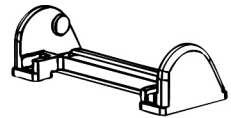
x1
231C



x1
231D



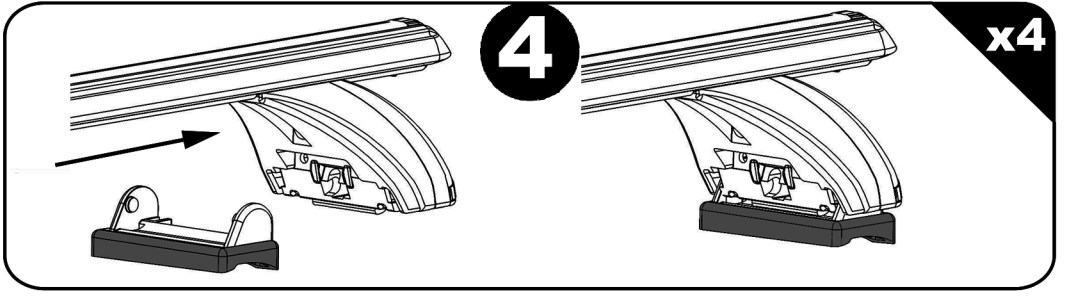
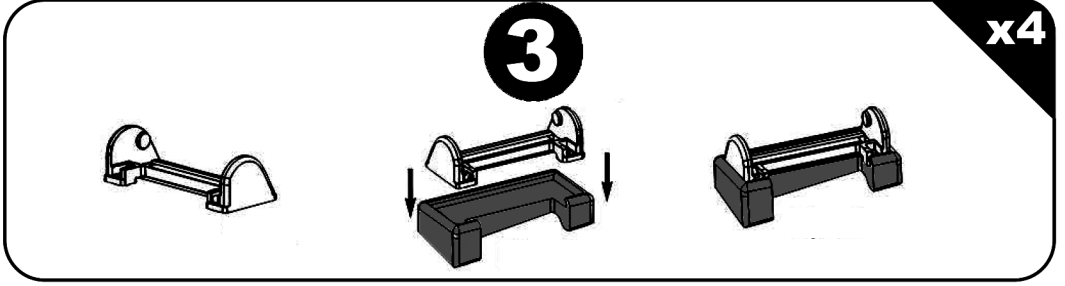
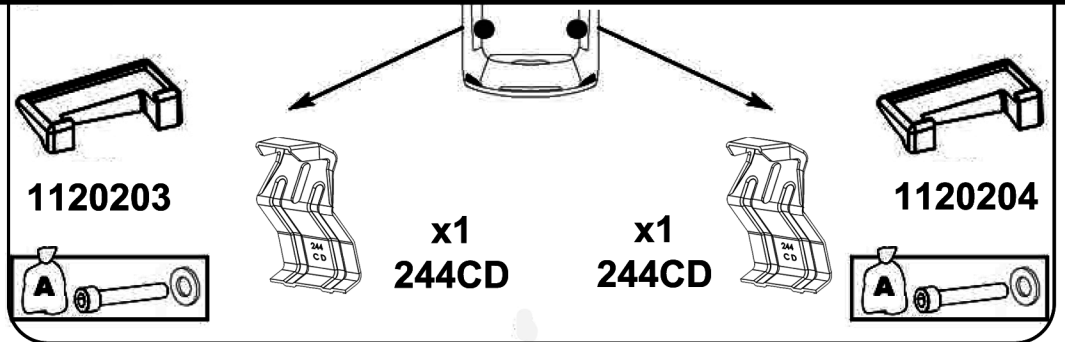
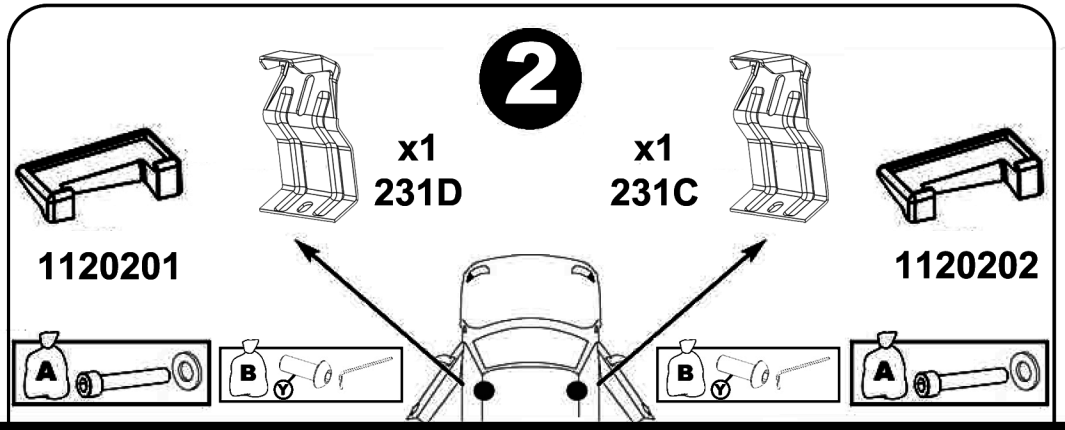
x2
244CD



x4
214800001



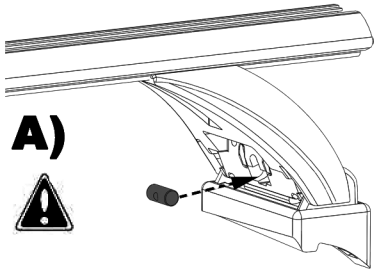
	X	Y
Seat Ibiza IV 5p	90,5 Cm	85 Cm



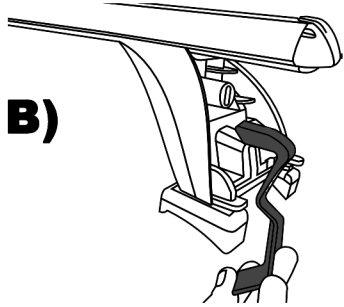
5

x4

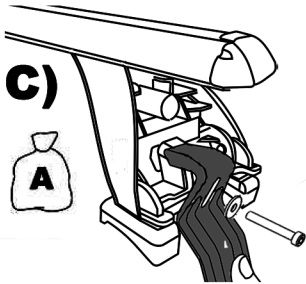
A)



B)

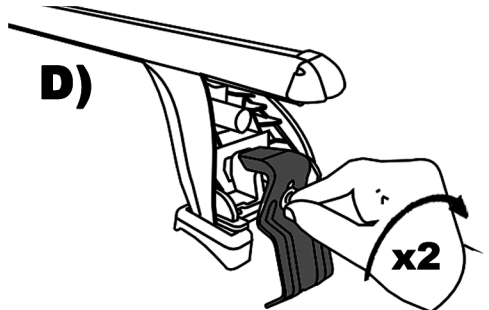


C)



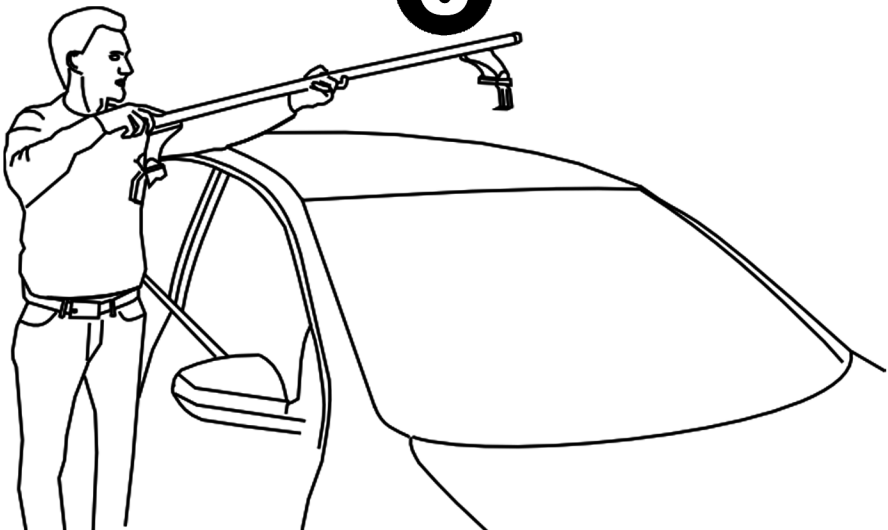
D)

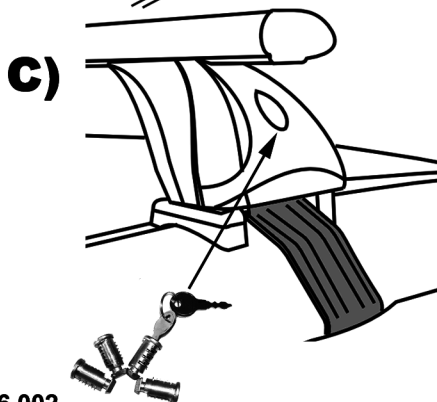
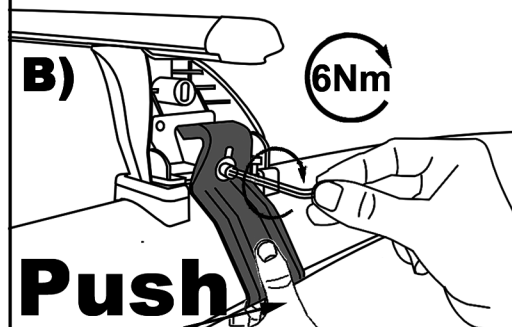
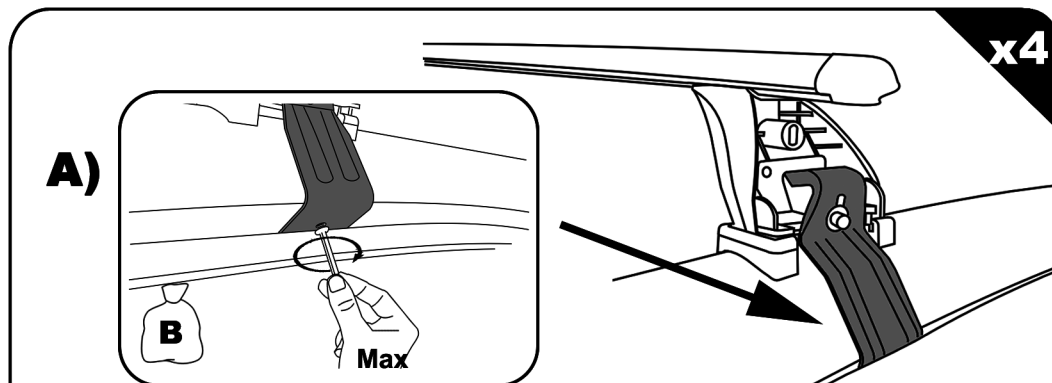
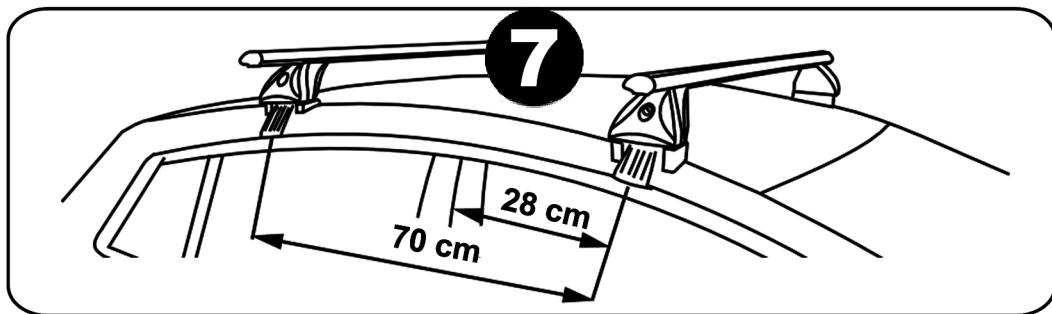
x2



6

x2



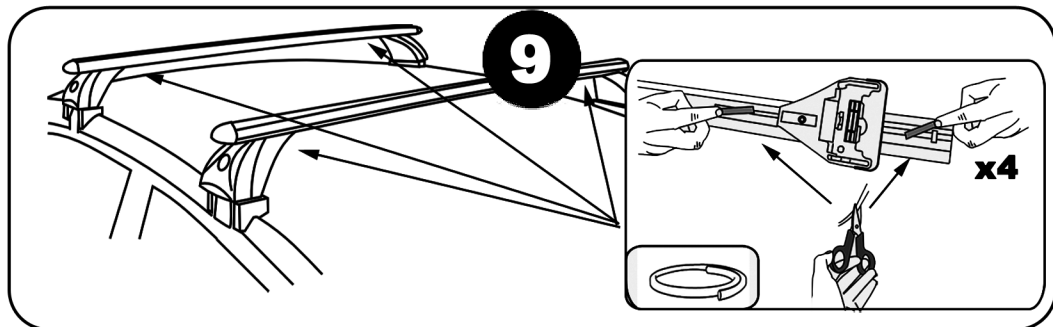
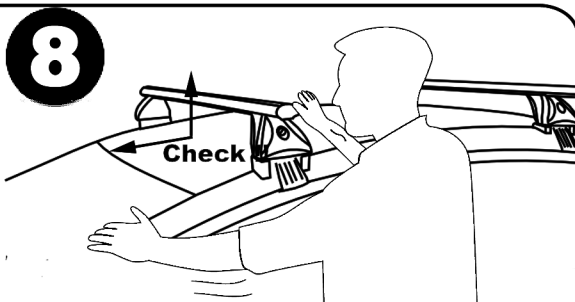
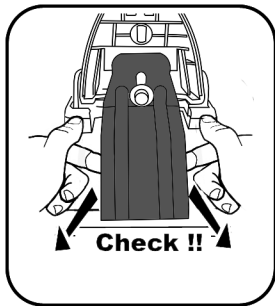


OPTION 156.002

F Serrer alternativement chaque côté
E Alternare il serraggio delle viti
I Serrare alternativamente
P Aperte alternadamente
GB Tighten alternately
D Die Schrauben abwechselnd anziehen

NL Afwisselend aan de linker en de rechterkant aandraaien
S Dra åt växelvis
FIN Kierrä vuorotellen
EST Pinguldage vaheldumisi
LAT Pievelciēt pamāšus
LIT Uzsukinėkite pakaitomis
PL Sruby dokrecy naprzemiennie

CZ Pokretla bagaznika dokrecaj dokrecaj naprzemiennie
SK Dotahujte striedavo
SLO Privijajte izmenično
HR Naizmjenično zategnite
HU Egymástól függetlenül szorítandó
TR Dönüşümlü sıkın



Démontage - Desmontaje - Smontaggio - Desmontagem - Disassembly - Demontage

