

TYPE A

Ref.: 156.237



ISO/PAS 11154

CITY CRASH TEST

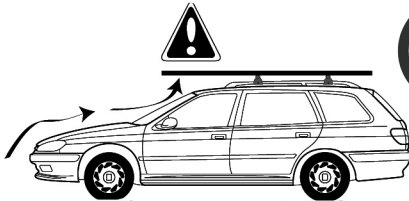
n° 237



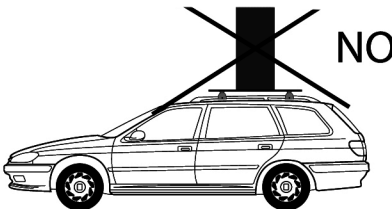
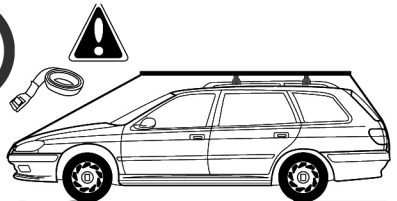
Hyundai i20	5	09/2008->
Opel Agila II	5	09/2007->
Suzuki Splash	5	01/2008->
Toyota Yaris I	5	04/1999->12/2005
Toyota Yaris II	5	01/2006->03/2011
Toyota Yaris III	5	03/2011->

5 kg + xx Kg = 75 kg max

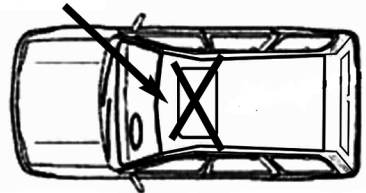
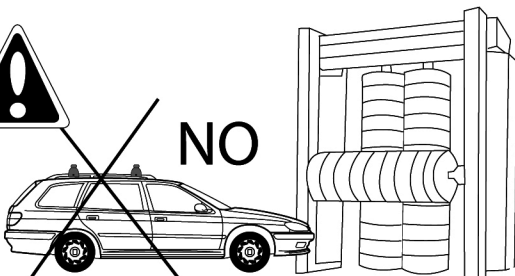
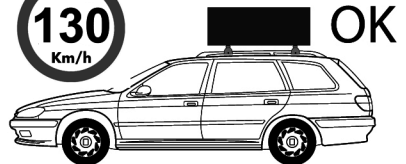
Ne pas dépasser la charge maximale des barres. Ne pas dépasser la charge maximale indiquée par le constructeur du véhicule
 Non superare il carico massimo delle barre portatutto. Non superare il carico massimo indicato dal costruttore del veicolo
 Carga máxima admisible indicada en la caja de las barras de techo. No exceda la carga máxima permitida por el fabricante del vehículo.
 Maximum allowable load indicated on the box of roof bars. Do not exceed the maximum load allowed by the vehicle manufacturer.
 Maximal zulässige belastung angegeben auf der box der dachreling. Überschreiten sie nicht die maximale belastung durch den fahrzeughersteller zugelassen.

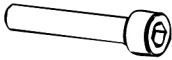


Max
80
Km/h

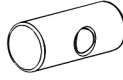


Max
130
Km/h





4762650
x4



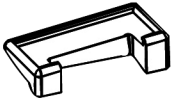
162100001
x4



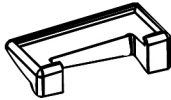
659106
x4



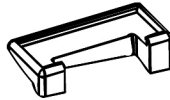
100005
x1



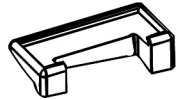
x1
1122501



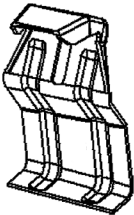
x1
1122502



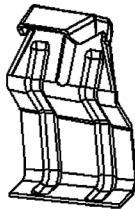
x1
1122503



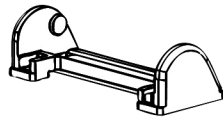
x1
1122504



237 A

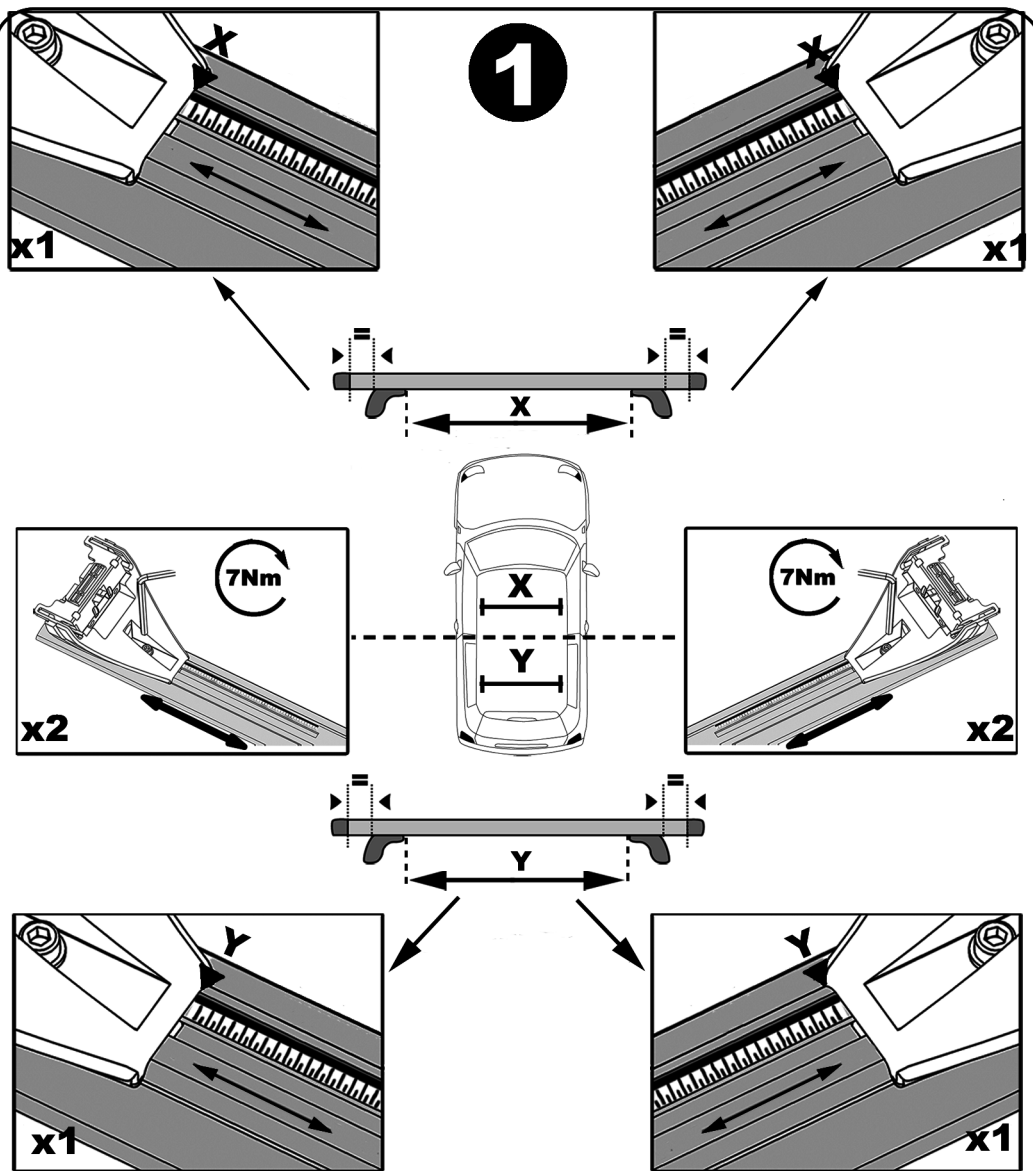


237 B



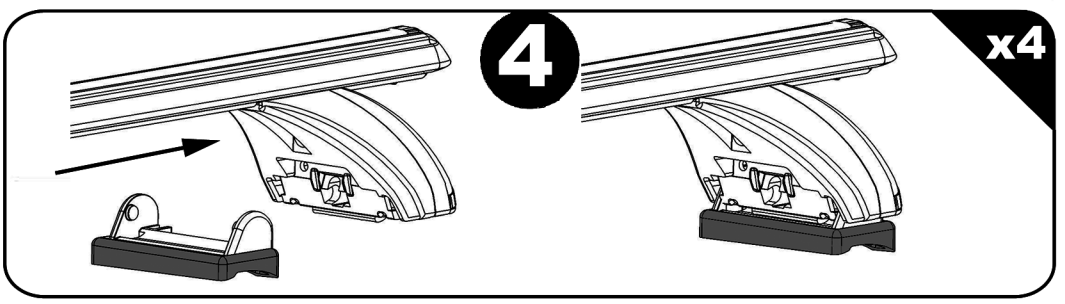
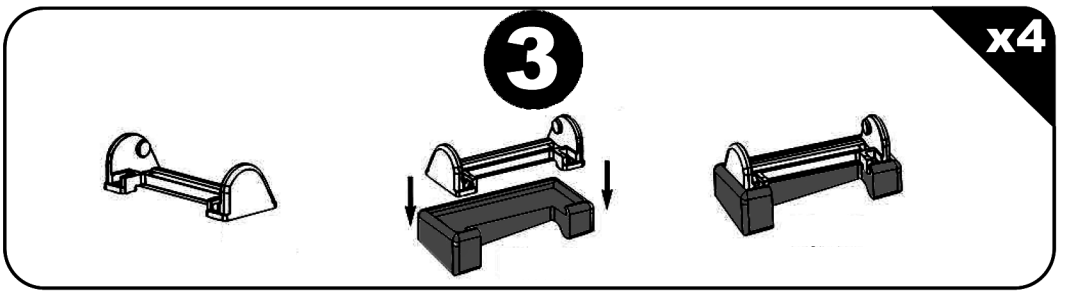
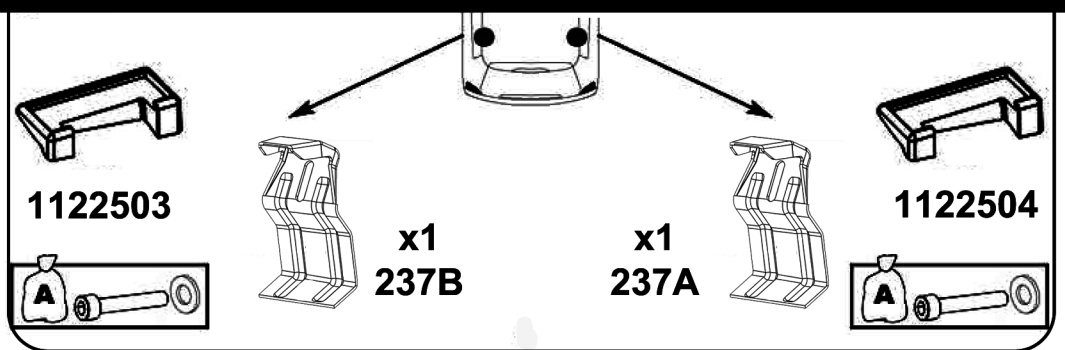
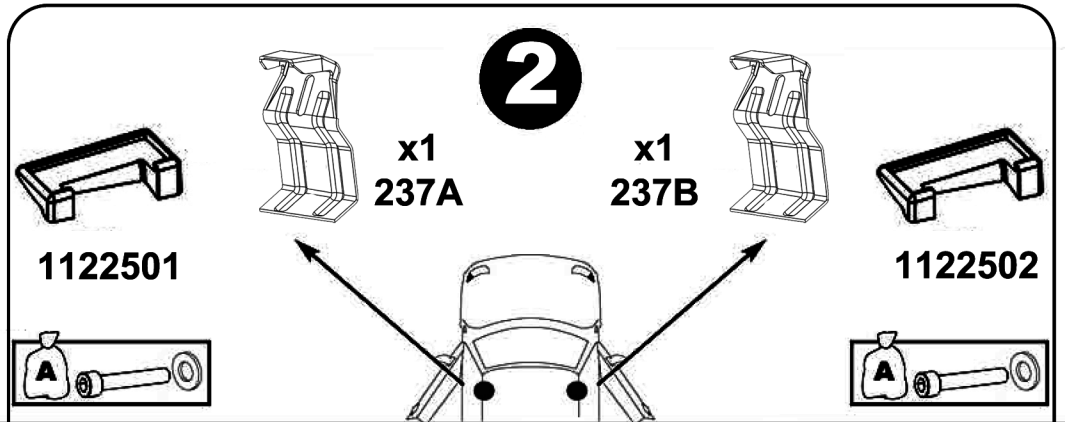
x4

214800001



	X	Y
i20	85 Cm	83,5 Cm
Agila	80 Cm	79 Cm
Splash	80 Cm	79 Cm

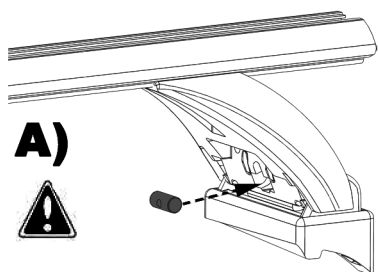
	X	Y
Yaris I	83,5 Cm	79 Cm
Yaris II	83,5 Cm	79 Cm
Yaris III	82,5 Cm	80,5 Cm



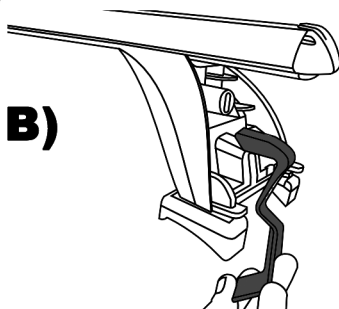
5

x4

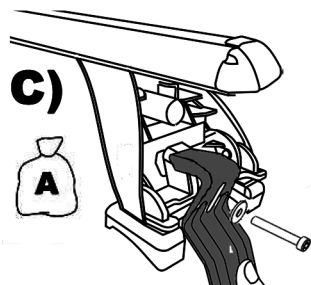
A)



B)

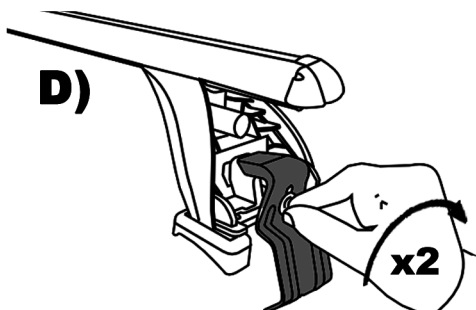


C)



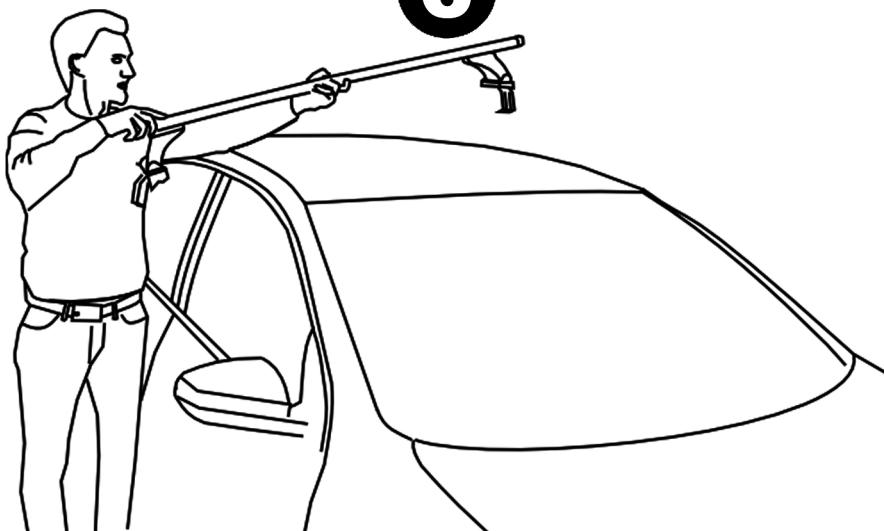
D)

x2



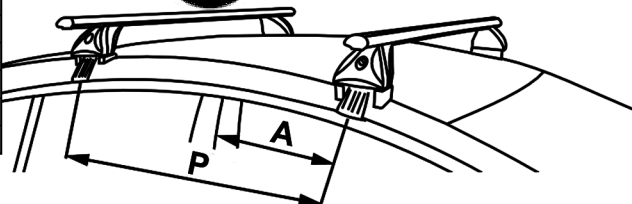
6

x2



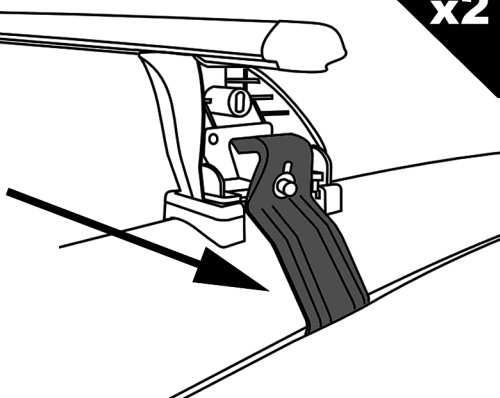
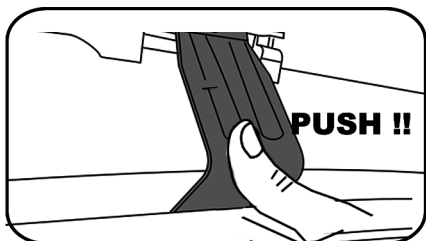
7

	A	P
i20	29,5 Cm	59,5 Cm
Agila	17 Cm	70 Cm
Splash	17 Cm	70 Cm
Yaris I	37 Cm	69 Cm
Yaris II	36 Cm	69,5 cm
Yaris III	39 Cm	69 cm



x2

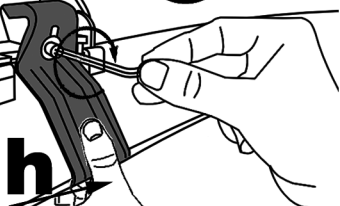
A)



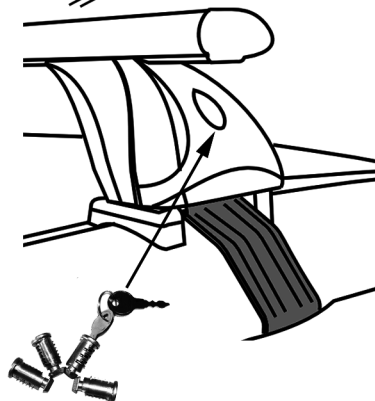
B)

6Nm

Push



C)

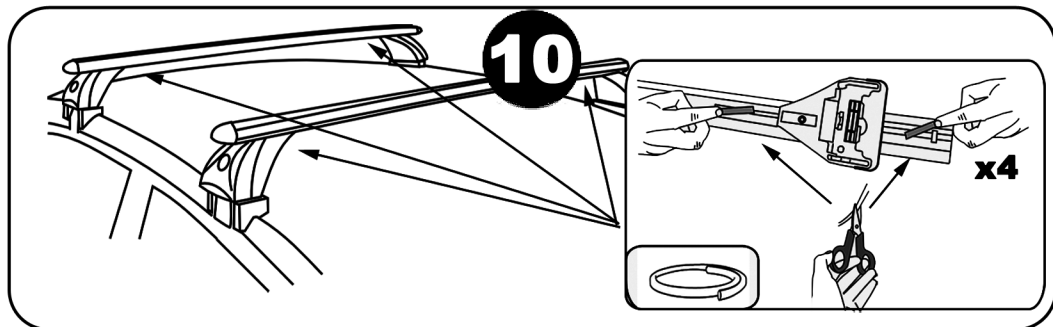
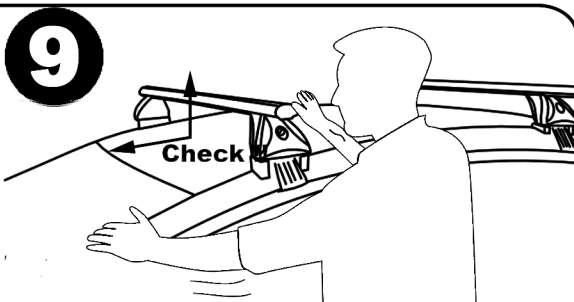
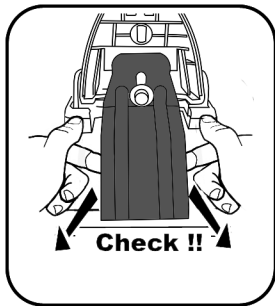


OPTION 156.002

F Serrer alternativement chaque côté
E Alternare il serraggio delle viti
I Serrare alternativamente
P Aperte alternadamente
GB Tighten alternately
D Die Schrauben abwechselnd anziehen

NL Afwisselend aan de linker en de rechterkant aandraaien
S Dra åt växelvis
FIN Kierrä vuorotellen
EST Pinguldage vaheldumisi
LAT Pīvelciēt pamāšus
LIT Uzsukinėkite pakaitomis
PL Sruby dokrećaj naprzemiennie

CZ Pokretla bagaznika dokrećaj dokrećaj naprzemiennie
SK Dotahujte striedavo
SLO Privijajte izmenično
HR Naizmjenično zategnite
HU Egymástól függetlenül szorítandó
TR Dönüşümlü sıkın



Démontage - Desmontaje - Smontaggio - Desmontagem - Disassembly - Demontage

