

TYPE A

Ref.: 156247



ISO/PAS 11154



CITY CRASH TEST





n° 247



Ford C-Max II

5

12/2010->

 } **5 kg** +  = **75 kg max**

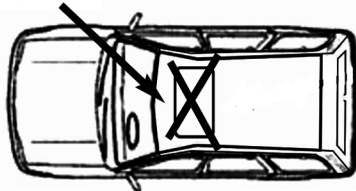
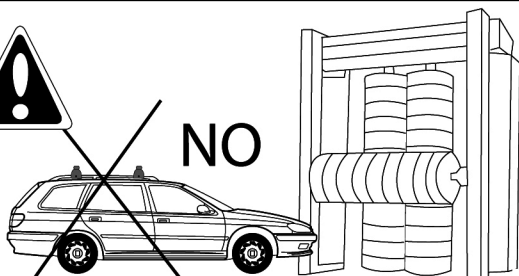
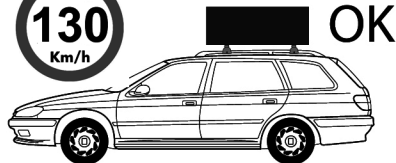
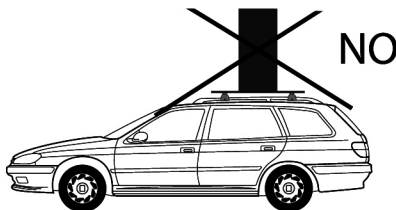
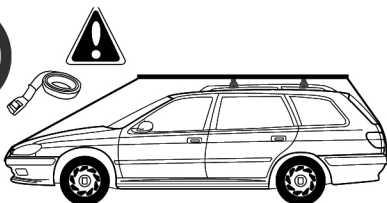
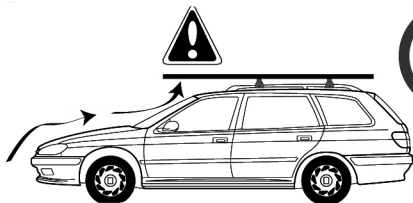
Ne pas dépasser la charge maximale des barres. Ne pas dépasser la charge maximale indiquée par le constructeur du véhicule

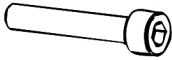
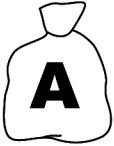
Non superare il carico massimo delle barre portatutto. Non superare il carico massimo indicato dal costruttore del veicolo

Carga máxima admisible indicada en la caja de las barras de techo. No exceda la carga máxima permitida por el fabricante del vehículo.

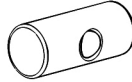
Maximum allowable load indicated on the box of roof bars. Do not exceed the maximum load allowed by the vehicle manufacturer.

Maximal zulässige belastung angegeben auf der box der dachreling. Überschreiten sie nicht die maximale belastung durch den fahrzeughersteller zugelassen.





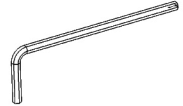
**M6x50
x4**



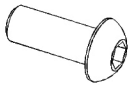
**162100001
x4**



**6591.06
x4**



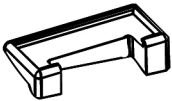
**100005
x1**



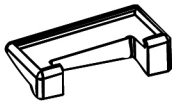
**M6x15
x4**



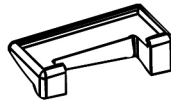
**100003
x1**



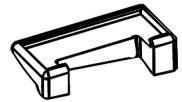
**x1
1122001**



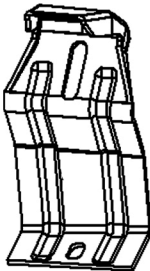
**x1
1122002**



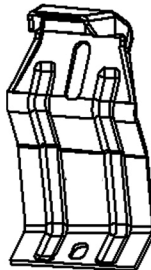
**x1
1122003**



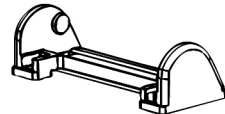
**x1
1122004**



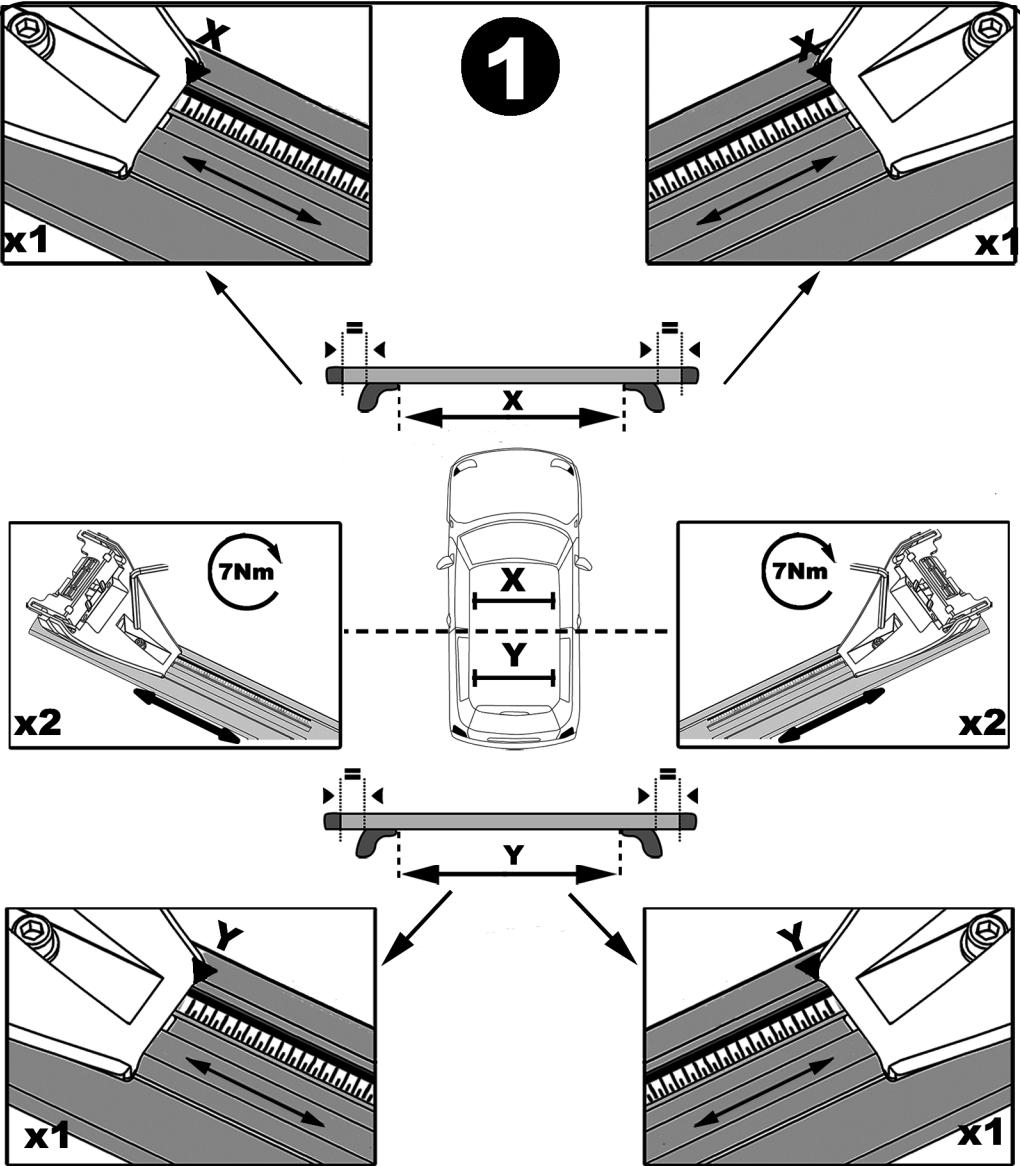
**x2
247A**



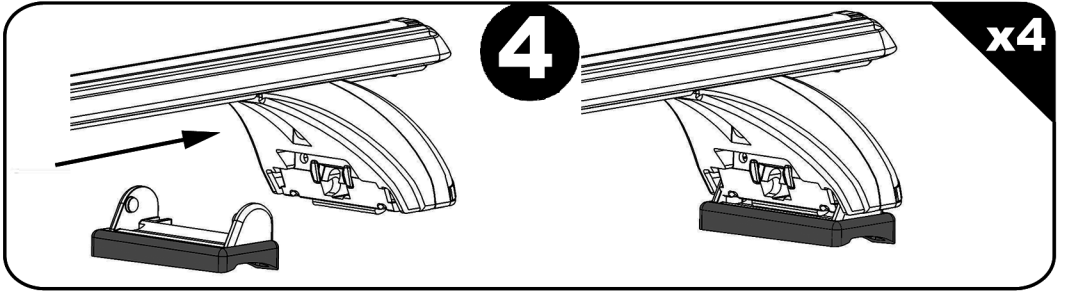
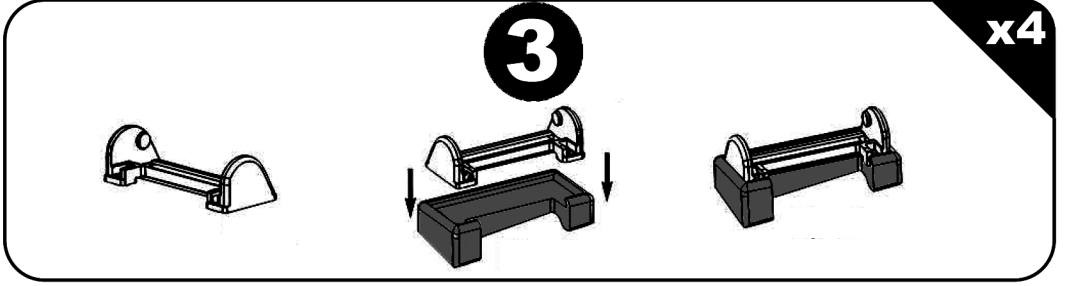
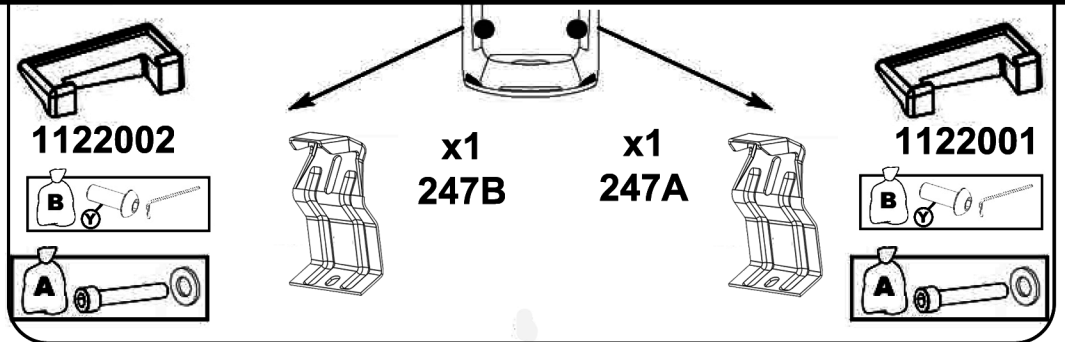
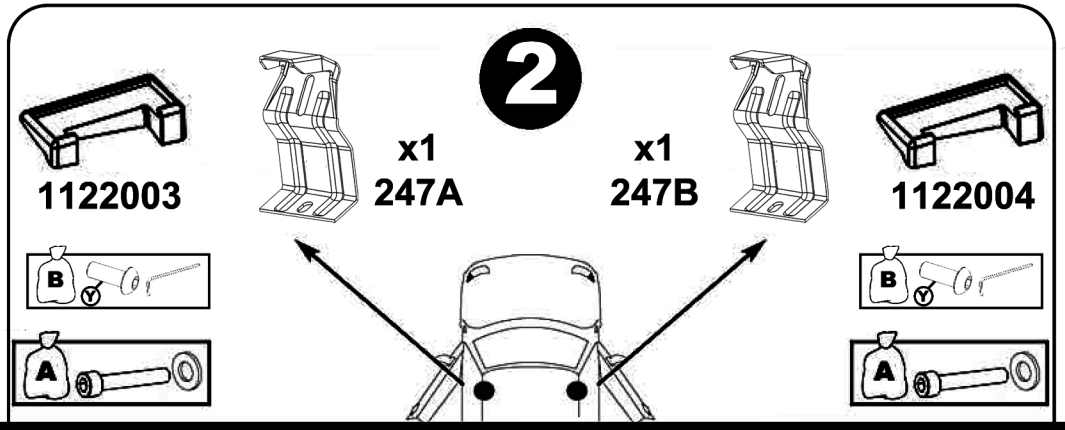
**x2
247B**



**x4
214800001**



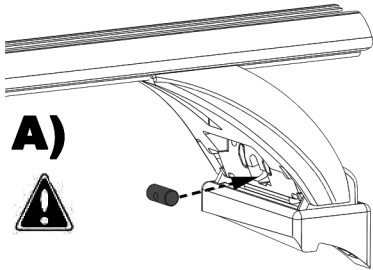
	X	Y
Ford Focus C-Max II	99,5 cm	93 cm



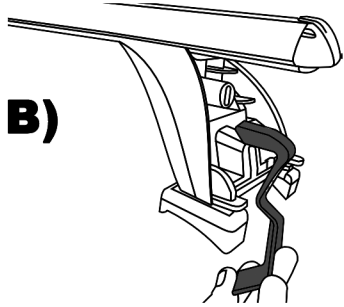
5

x4

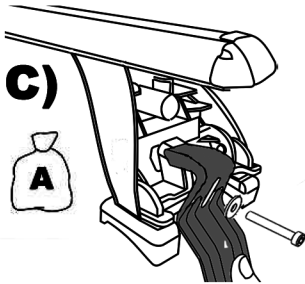
A)



B)

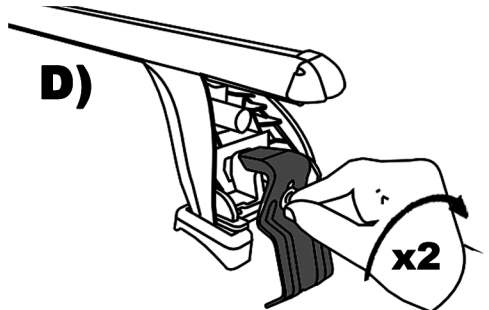


C)



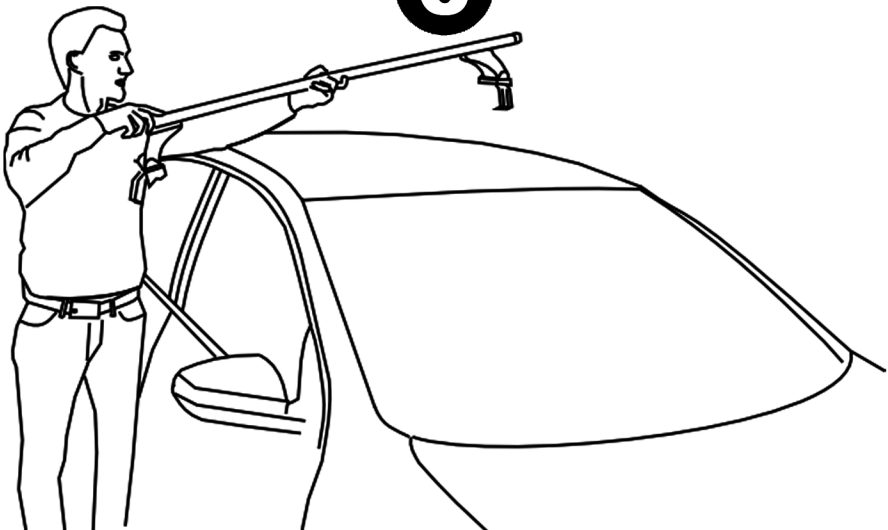
D)

x2



6

x2



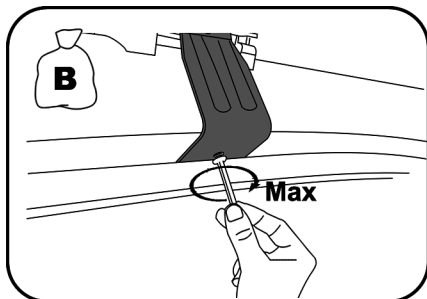


7

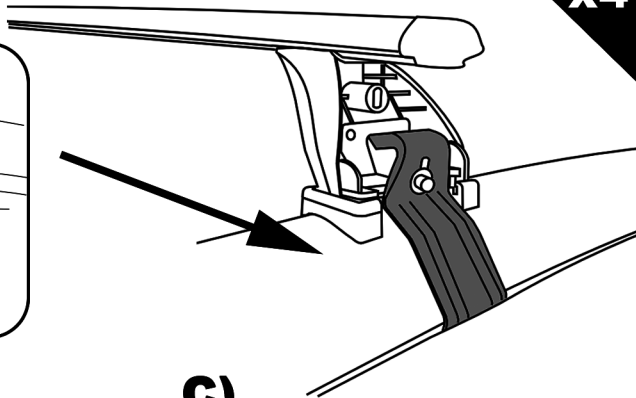
FR: uniquement pour les véhicules avec trou fileté
 IT: solo per veicoli con foro filettato
 ES: sólo para vehículos con agujero roscado
 EN: only for vehicles with threaded hole
 DE: nur für Fahrzeuge mit Gewindebohrung



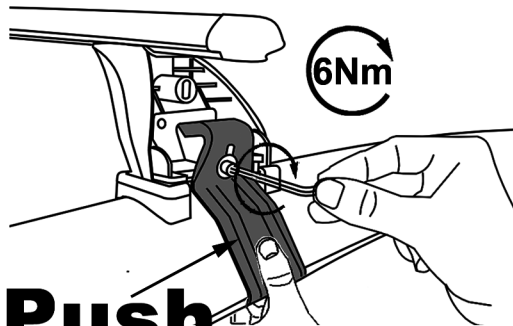
A)



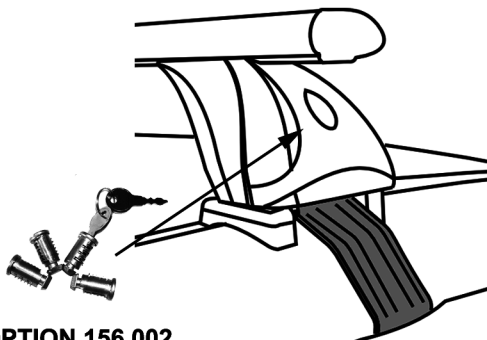
x4



B)



C)



Push

OPTION 156.002

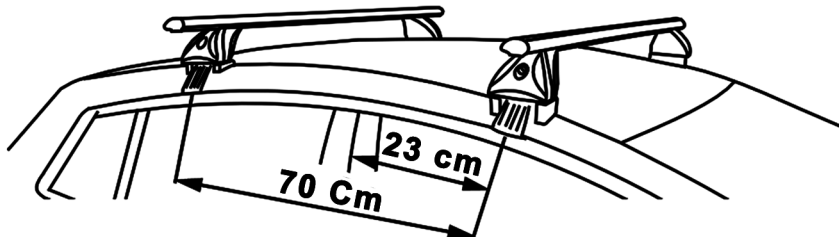
F Serrer alternativement chaque côté
E Alternare il serraggio delle viti
I Serrare alternativamente
P Aperte alternadamente
GB Tighten alternately
D Die Schrauben abwechselnd anziehen

NL Afwisselend aan de linker en de rechterkant aandraaien
S Dra åt växelvis
FIN Kierrä vuorotellen
EST Pinguldage vaheldumisi
LAT Pievelciēt pamāšus
LIT Uzsukinėkite pakaitomis
PL Sruby dokrecaj naprzemiennie

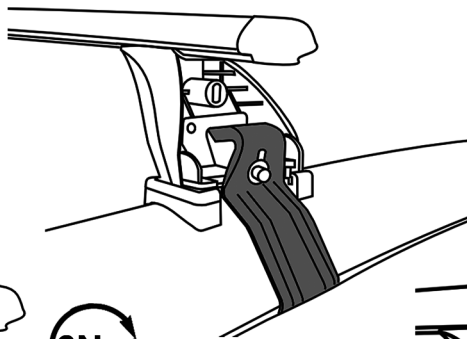
CZ Pokretla bagaznika dokrecaj dokrecaj naprzemiennie
SK Dotahujte striedavo
SLO Privijajte izmenicno
HR Naizmjenicno zategnite
HU Egymástól függetlenül szorítandó
TR Dönüsmüli sikin

FR: véhicules avec trou non fileté
 IT: veicoli con foro non filettato
 ES: vehículos con el agujero no roscado
 EN: vehicles with the unthreaded hole
 DE: Fahrzeuge mit dem Gewinde Loch

8

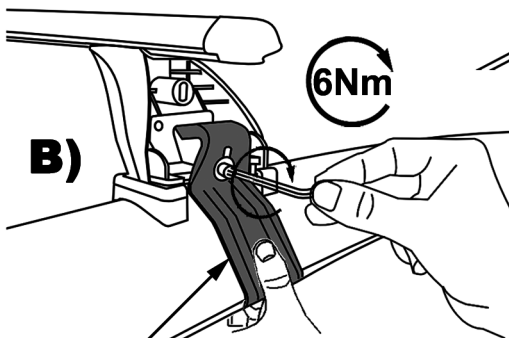


A)



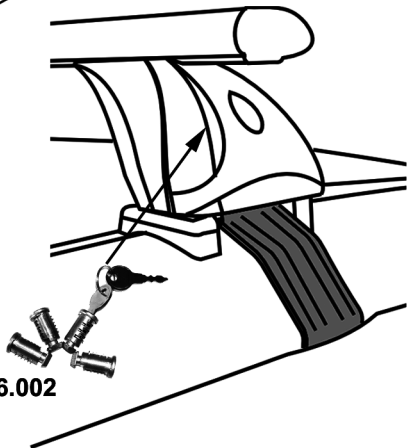
x4

B)



6Nm

C)



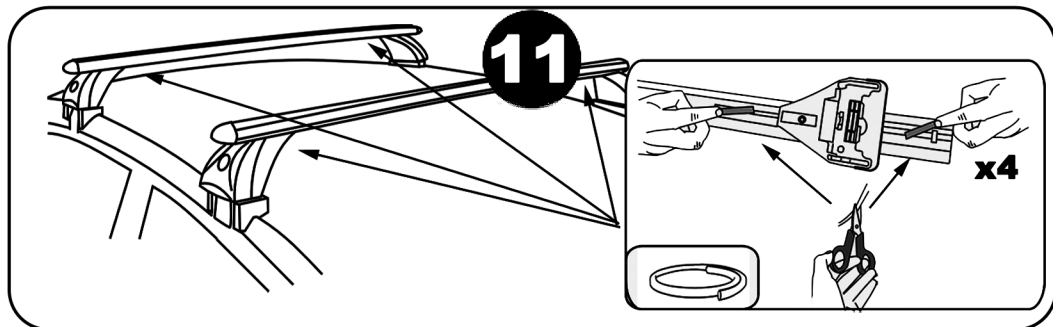
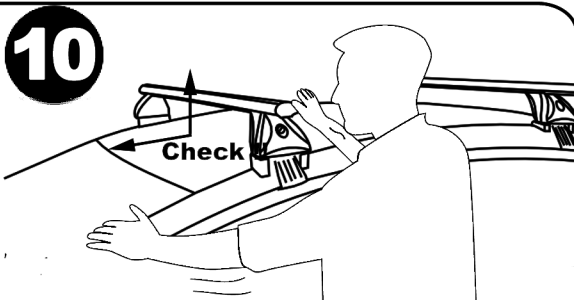
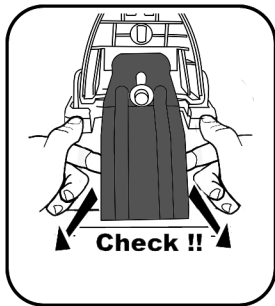
Push

OPTION 156.002

F Serrer alternativement chaque côté
E Alternare il serraggio delle viti
I Serrare alternativamente
P Aperte alternadamente
GB Tighten alternately
D Die Schrauben abwechselnd anziehen

NL Afwisselend aan de linker en de rechterkant aandraaien
S Dra åt växelvis
FIN Kierrä vuorotellen
EST Pinguldage vaheldumisi
LAT Pievelciēt pamāšus
LIT Uzsukinėkite pakaitomis
PL Sruby dokrecaj naprzemiennie

CZ Pokretla bagaznika dokrecaj dokrecaj naprzemiennie
SK Dotahujte striedavo
SLO Privijajte izmenicno
HR Naizmjenicno zategnite
HU Egymástól függetlenül szoritandó
TR Dönüsmülı sikin



Démontage - Desmontaje - Smontaggio - Desmontagem - Disassembly - Demontage

