

TYPE A

Ref.: 156252



ISO/PAS 11154



CITY CRASH TEST





n° 252



Seat Ibiza IV
Seat Ibiza IV

3
5

02/2002->06/2008
02/2002->06/2008

 } **5 kg** +  = **75 kg max**

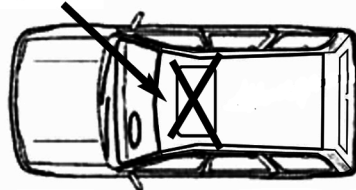
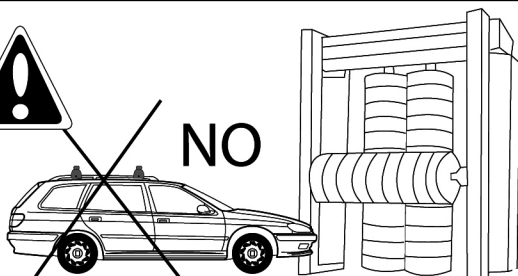
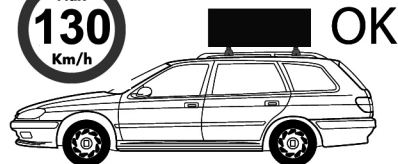
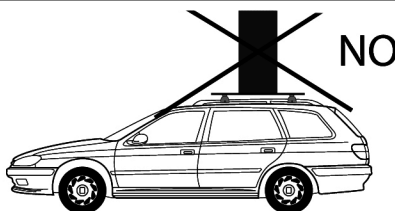
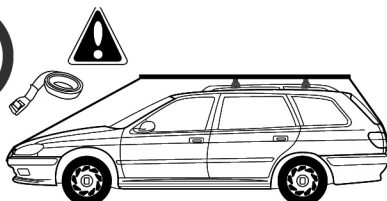
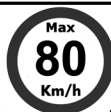
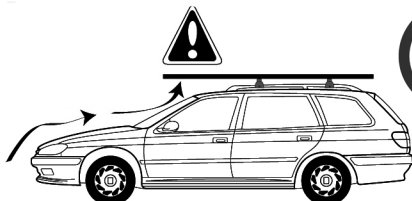
Ne pas dépasser la charge maximale des barres. Ne pas dépasser la charge maximale indiquée par le constructeur du véhicule

Non superare il carico massimo delle barre portatutto. Non superare il carico massimo indicato dal costruttore del veicolo

Carga máxima admisible indicada en la caja de las barras de techo. No exceda la carga máxima permitida por el fabricante del vehículo.

Maximum allowable load indicated on the box of roof bars. Do not exceed the maximum load allowed by the vehicle manufacturer.

Maximal zulässige belastung angegeben auf der box der dachreling. Überschreiten sie nicht die maximale belastung durch den fahrzeughersteller zugelassen.





A

M6x50
 x4

162100001
 x4

659106
 x4

100005
 x1

x1
1124001

x1
1124002

x1
1124003

x1
1124004

B

M6x15
 x2

100003
 x1

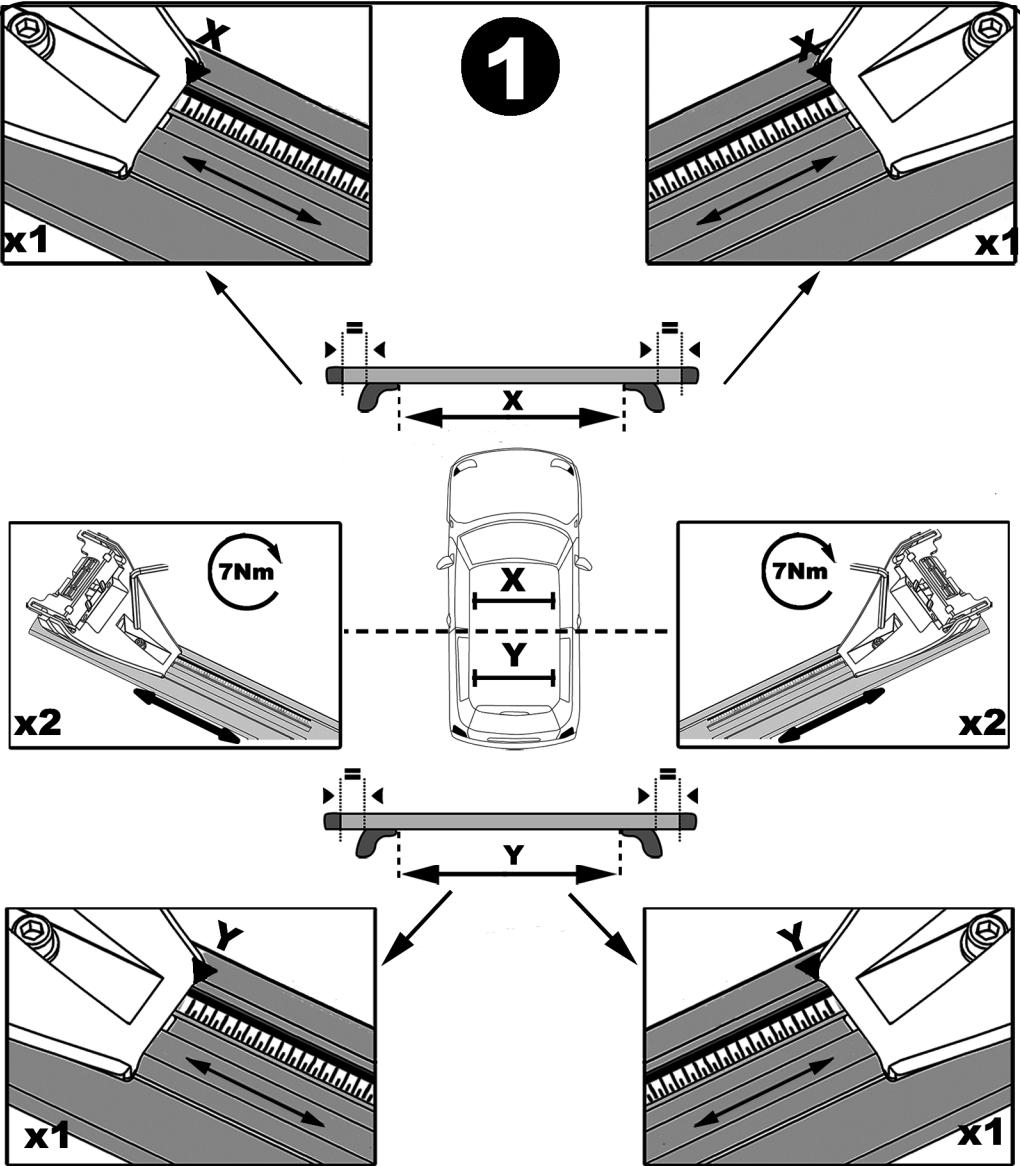
x2
244CD

x1
231C

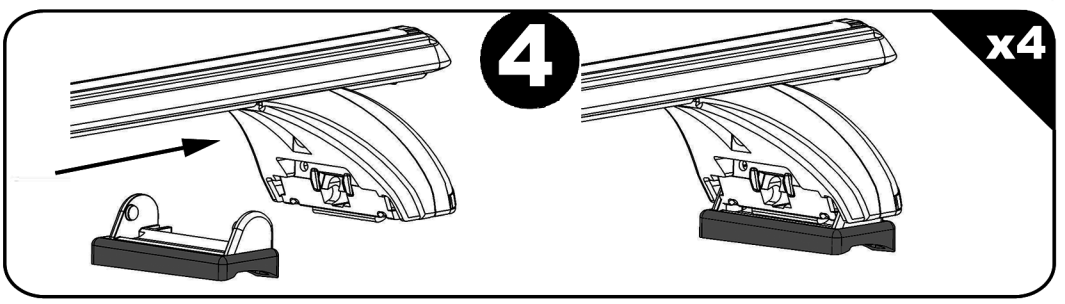
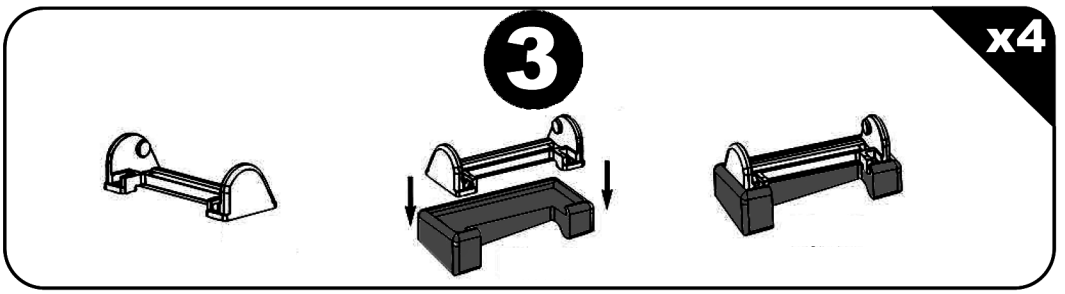
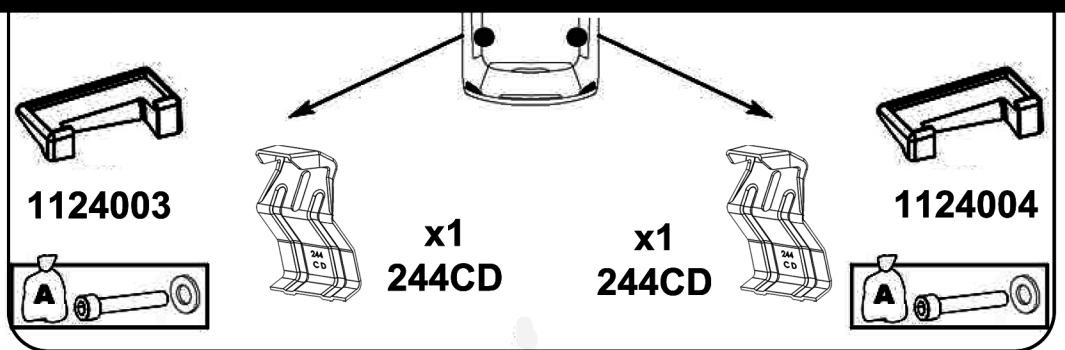
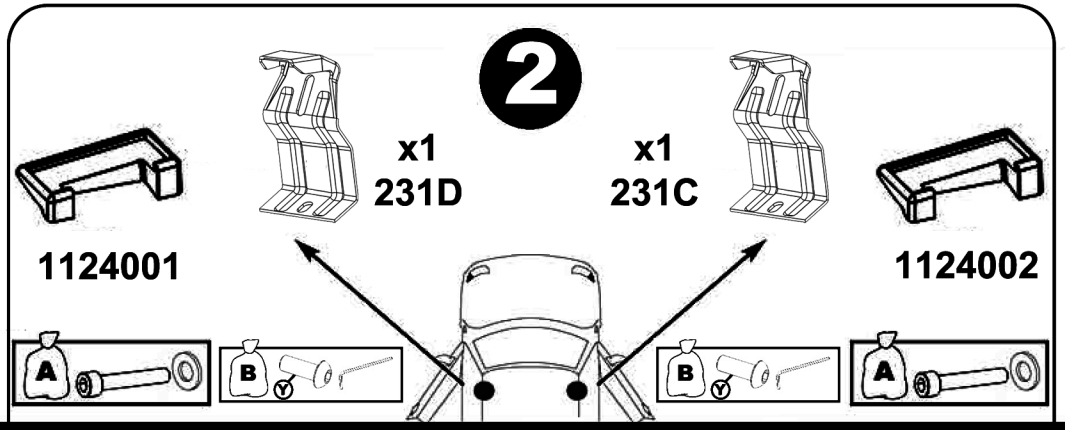
x1
231D

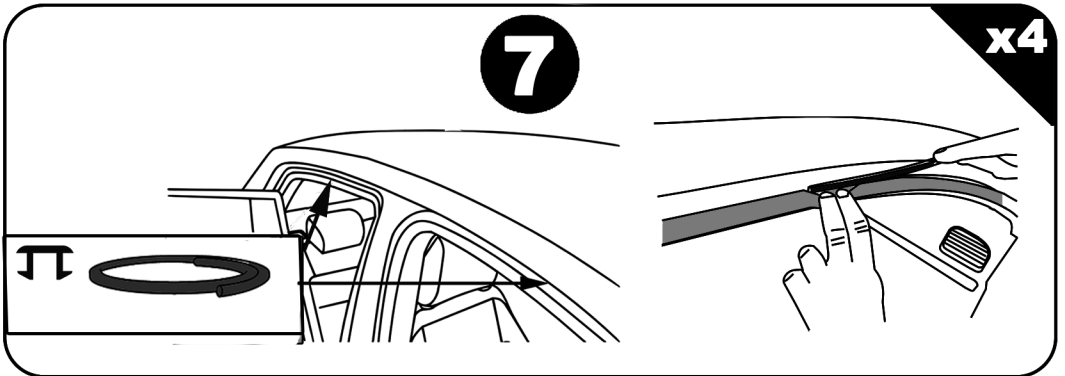
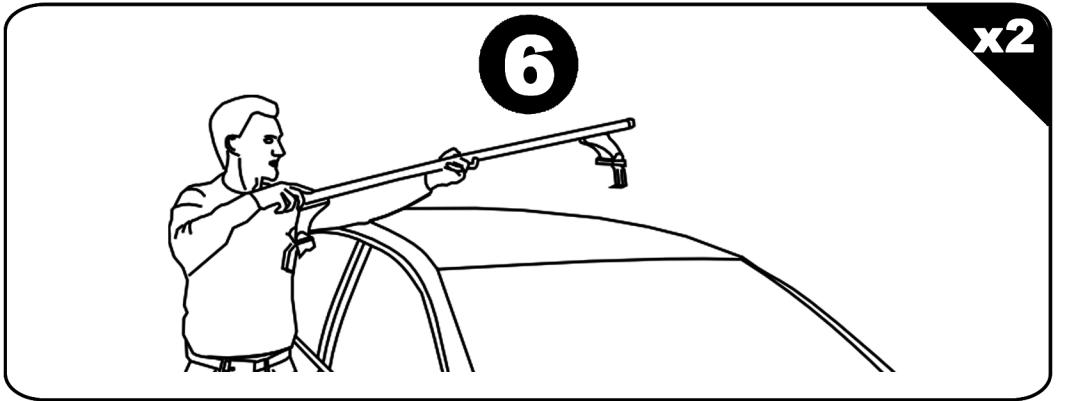
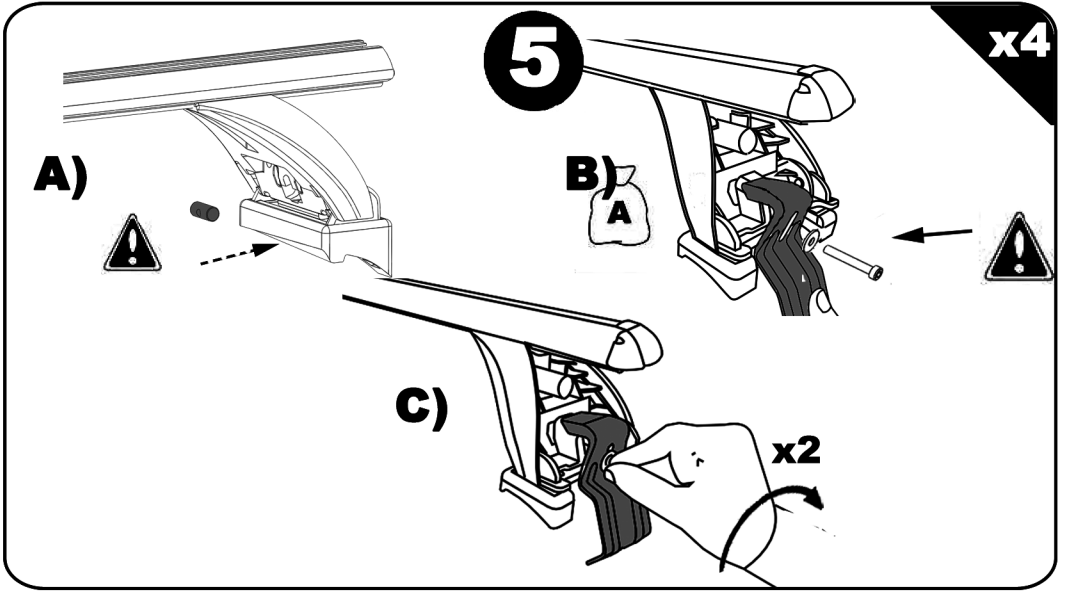
x4
214800001

x4
92010-115



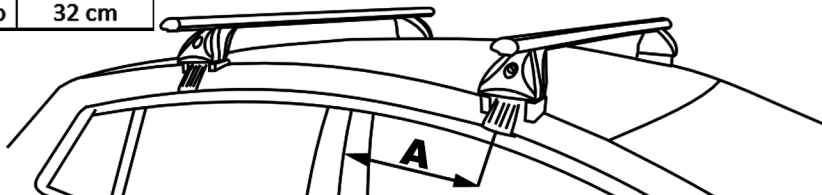
| | X | Y |
|------------------|-------|---------|
| Seat Ibiza IV 3p | 82 cm | 78,5 cm |
| Seat Ibiza IV 5p | 82 cm | 78,5 cm |





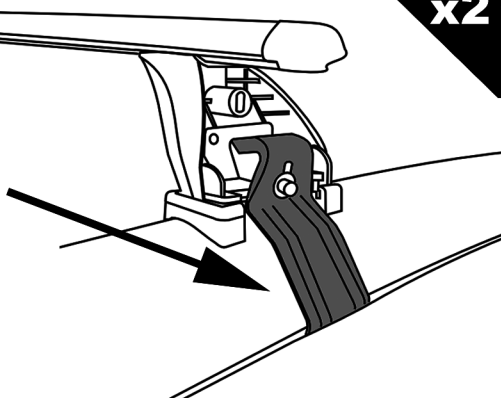
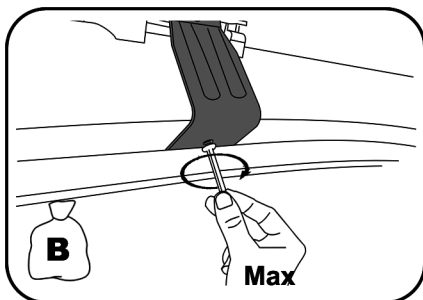
8

| | A |
|------------------|---------|
| Seat Ibiza IV 3p | 45,5 cm |
| Seat Ibiza IV 5p | 32 cm |



x2

A)



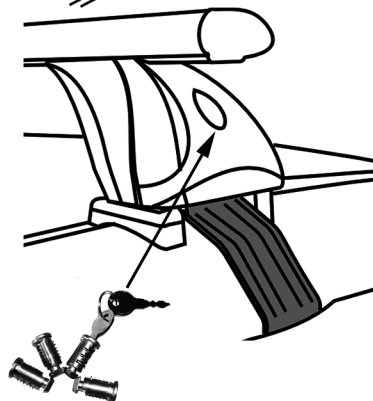
B)

6Nm

Push



C)



OPTION 156.002

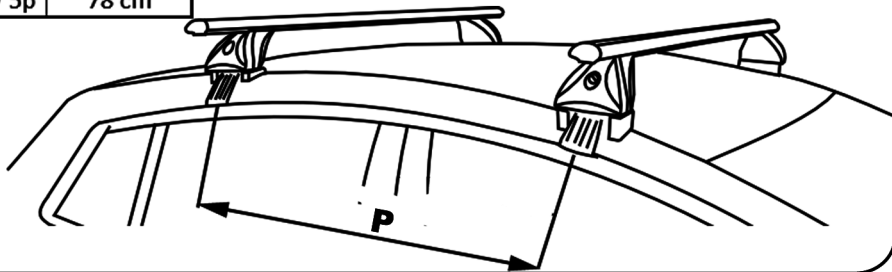
F Serrer alternativement chaque côté
E Alternare il serraggio delle viti
I Serrare alternativamente
P Aperte alternadamente
GB Tighten alternately
D Die Schrauben abwechselnd anziehen

NL Afwisselend aan de linker en de rechterkant aandraaien
S Dra åt växelvis
FIN Kierrä vuorotellen
EST Pinguldage vaheldumisi
LAT Pievelciēt pamāšus
LIT Uzsukinėkite pakaitomis
PL Sruby dokrecaj naprzemiennie

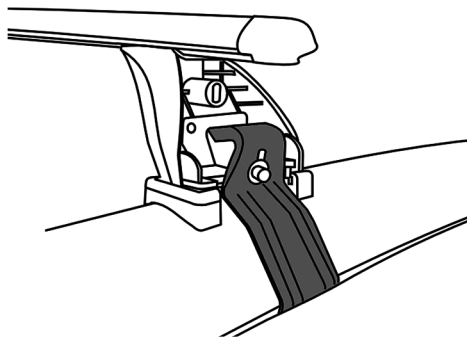
CZ Pokretla bagaznika dokrecaj dokrecaj naprzemiennie
SK Dotahujte striedavo
SLO Privijajte izmenično
HR Naizmjenično zategnite
HU Egymástól függetlenül szorítandó
TR Dönüsmüli sikin

9

| | P |
|------------------|-------|
| Seat Ibiza IV 3p | 76 cm |
| Seat Ibiza IV 5p | 78 cm |

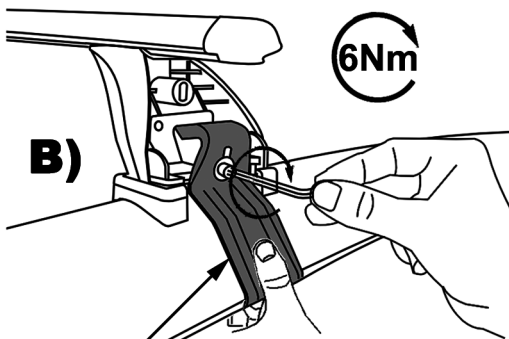


A)

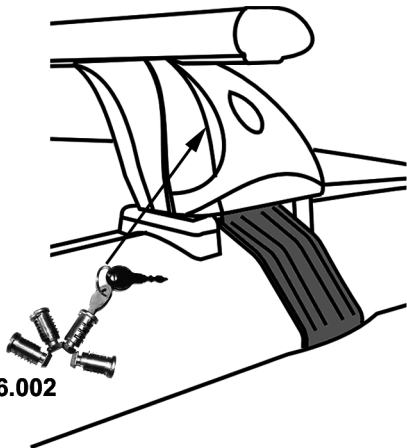


x2

B)



C)



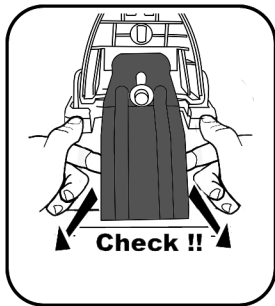
Push

OPTION 156.002

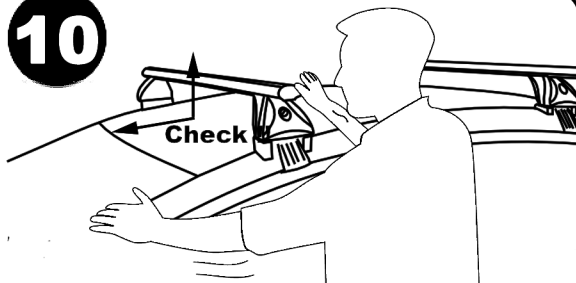
F Serrer alternativement chaque côté
E Alternare il serraggio delle viti
I Serrare alternativamente
P Aperte alternadamente
GB Tighten alternately
D Die Schrauben abwechselnd anziehen

NL Afwisselend aan de linker en de rechterkant aandraaien
S Dra åt växelvis
FIN Kierrä vuorotellen
EST Pinguldage vaheldumisi
LAT Pievelciēt pamāšus
LIT Uzsukinėkite pakaitomis
PL Sruby dokrecy naprzemiennie

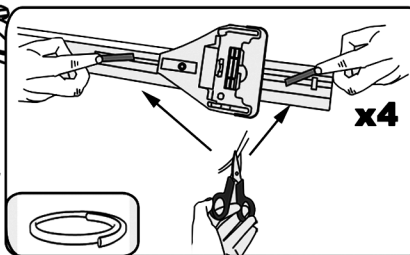
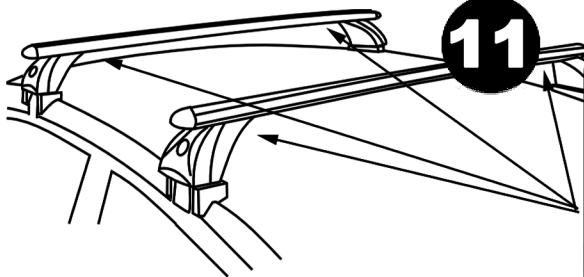
CZ Pokretla bagaznika dokrecaj dokrecaj naprzemiennie
SK Dotahujte striedavo
SLO Privijajte izmenicno
HR Naizmjenicno zategnite
HU Egymástól függetlenül szorítandó
TR Dönüsümlü sikin



10



11



Démontage - Desmontaje - Smontaggio - Desmontagem - Disassembly - Demontage

