

TYPE A



Ref.: 156255

ISO/PAS 11154

CITY CRASH TEST

n° 255



Land Rover Freelander II
Mitsubishi L200 III
Mitsubishi Pajero Sport

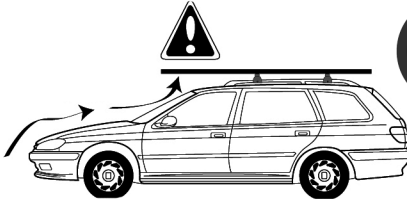
5
5
5

01/2006->
06/1996->04/2006
01/1998->01/2001

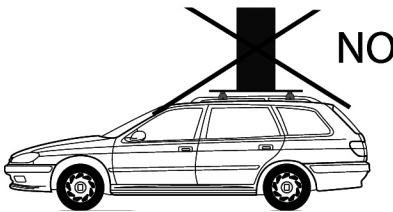
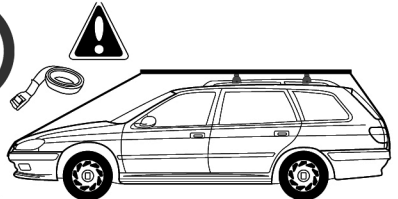


5 kg + xx Kg = 75 kg max

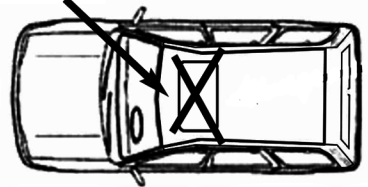
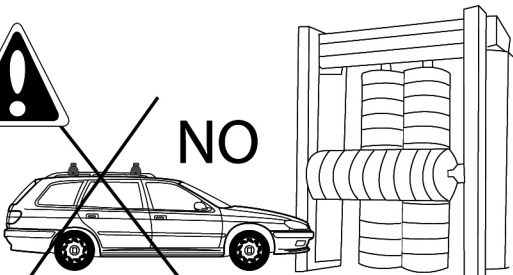
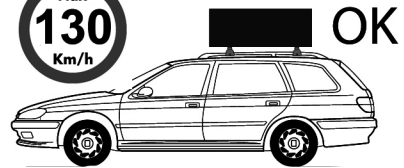
Ne pas dépasser la charge maximale des barres. Ne pas dépasser la charge maximale indiquée par le constructeur du véhicule.
 Non superare il carico massimo delle barre portattuto. Non superare il carico massimo indicato dal costruttore del veicolo.
 Carga máxima admisible indicada en la caja de las barras de techo. No exceda la carga máxima permitida por el fabricante del vehículo.
 Maximum allowable load indicated on the box of roof bars. Do not exceed the maximum load allowed by the vehicle manufacturer.
 Maximal zulässige belastung angegeben auf der box der dachreling. Überschreiten sie nicht die maximale belastung durch den fahrzeughersteller zugelassen.



Max 80 Km/h

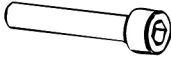


Max 130 Km/h

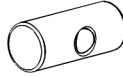




M6x50



x4



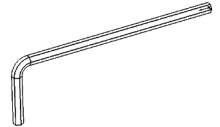
162100001

x4



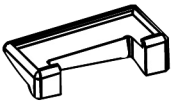
659106

x4



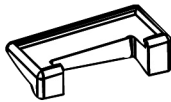
100005

x1



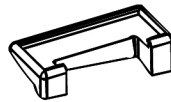
x1

1120501



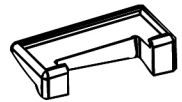
x1

1120502



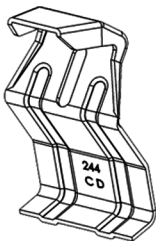
x1

1120503



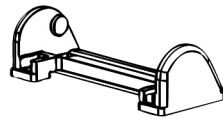
x1

1120504



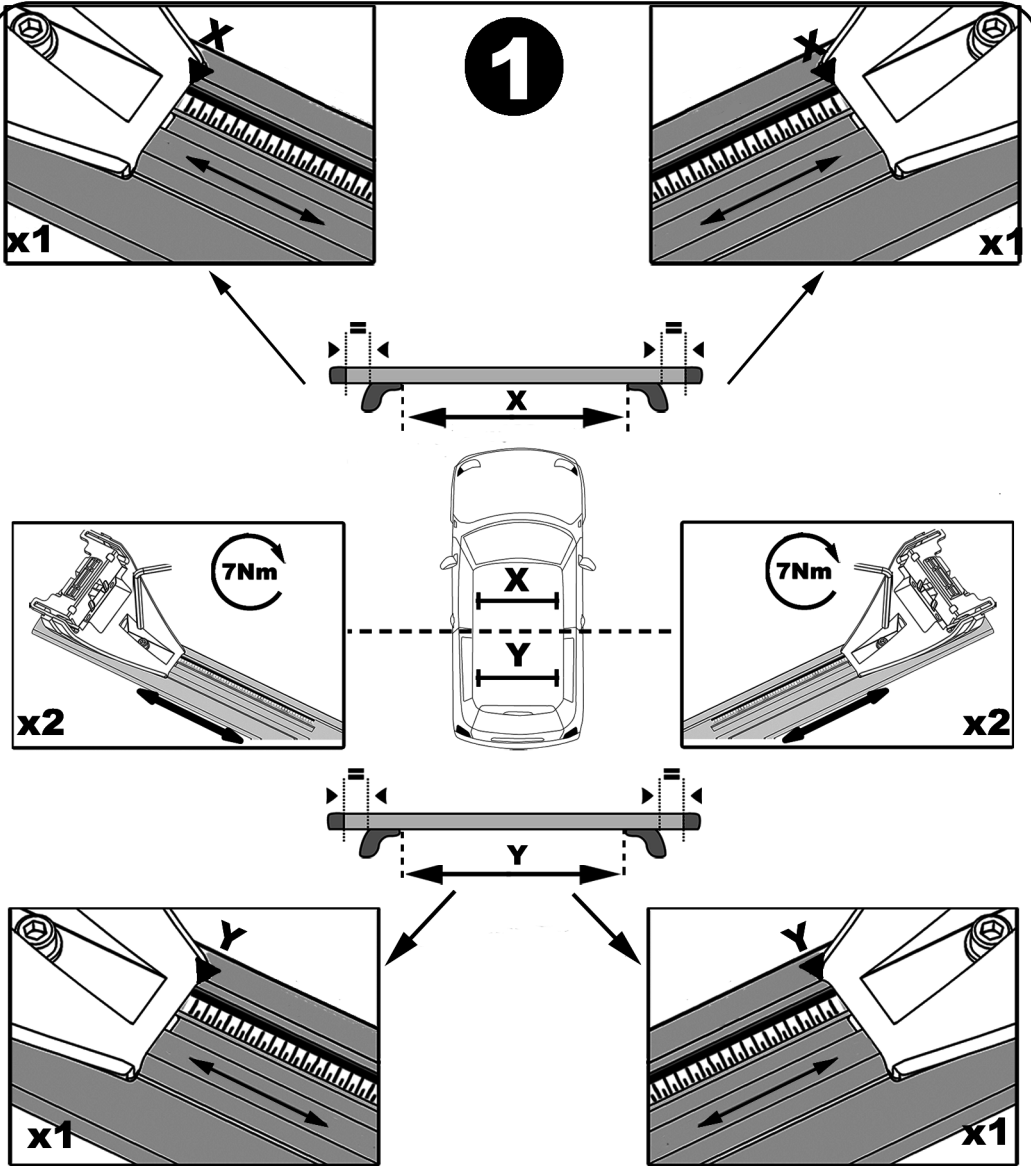
244CD

X4

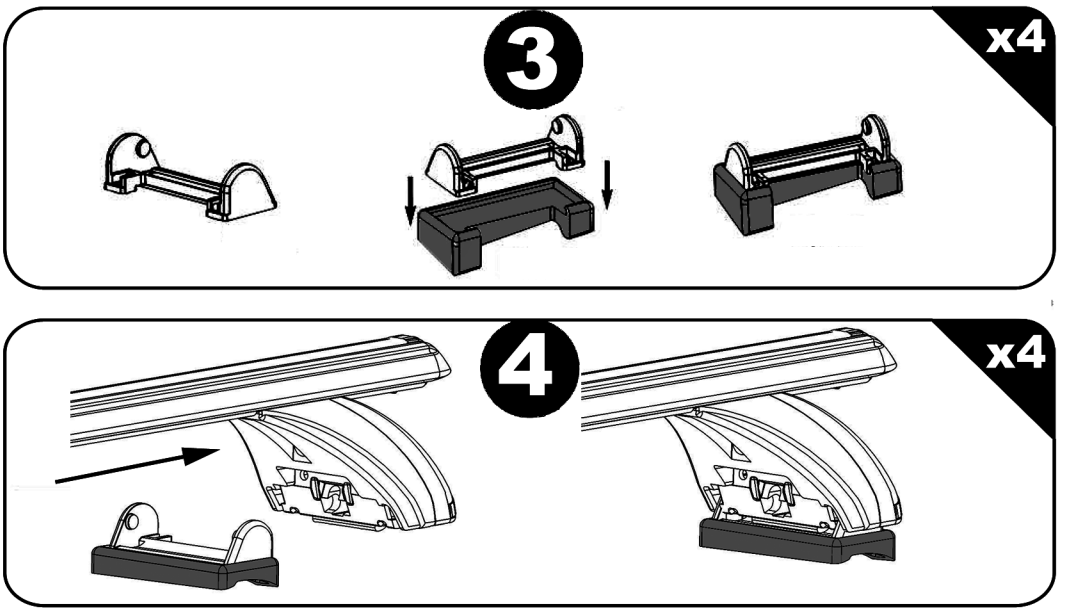
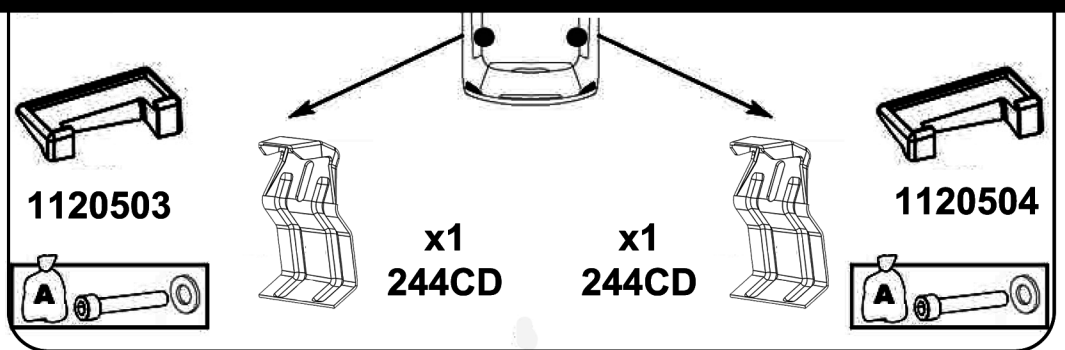
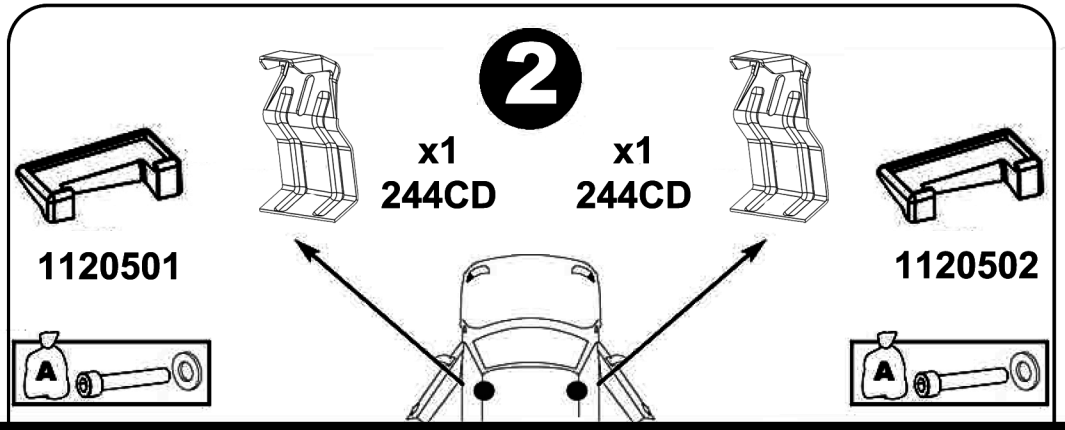


x4

214800001



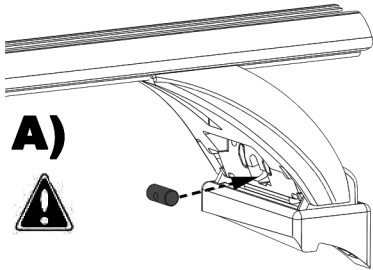
	X	Y
Land Rover Freelander II	95 cm	94 cm
Mitsubishi L200 Double cab	90 cm	90 cm
Mitsubishi Pajero Sport	90 cm	90 cm



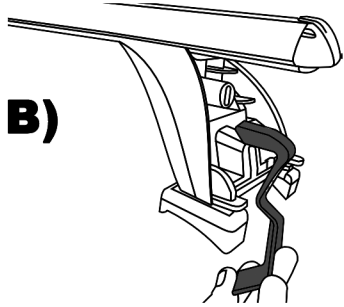
5

x4

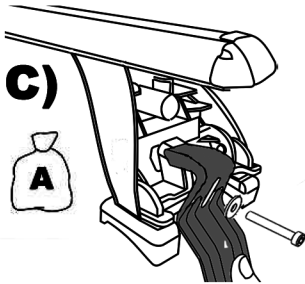
A)



B)

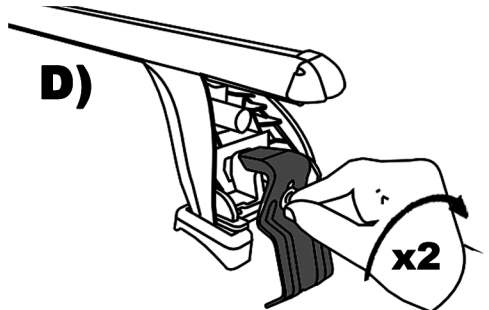


C)



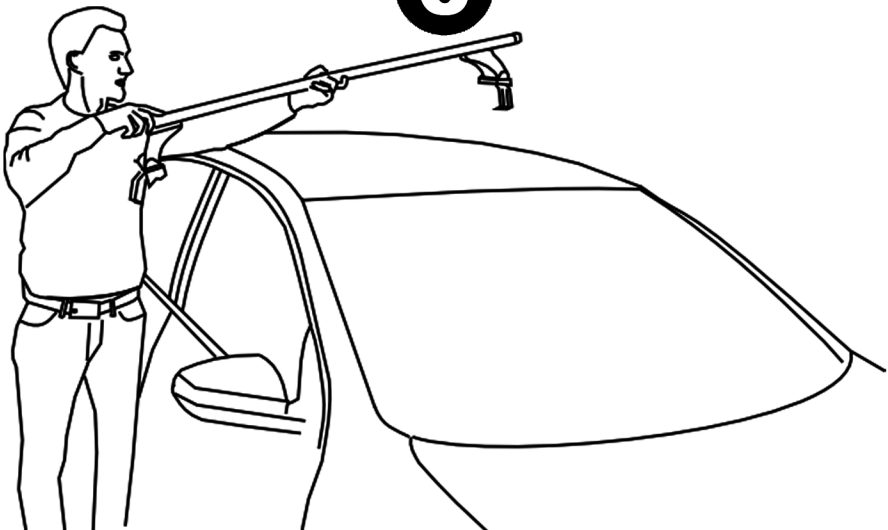
D)

x2



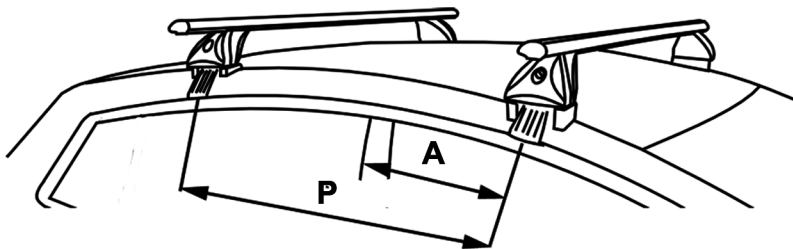
6

x2



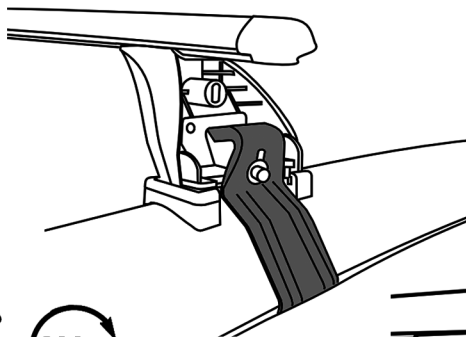
7

	A	P
Land Rover Freelander II	25 Cm	74 Cm
Mitsubishi L200 III	20 Cm	75 Cm
Mitsubishi Pajero Sport	20 Cm	75 Cm



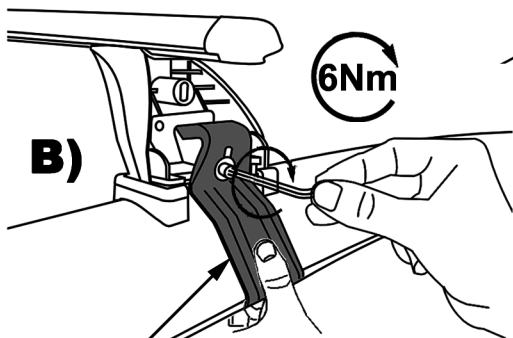
x4

A)

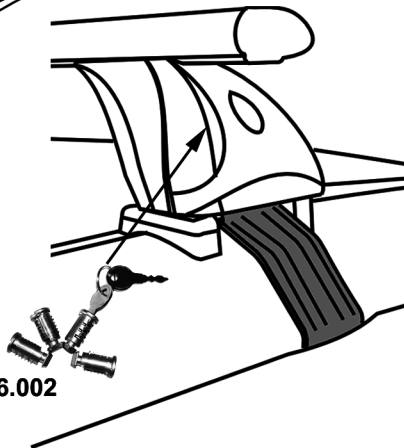


6Nm

B)



C)



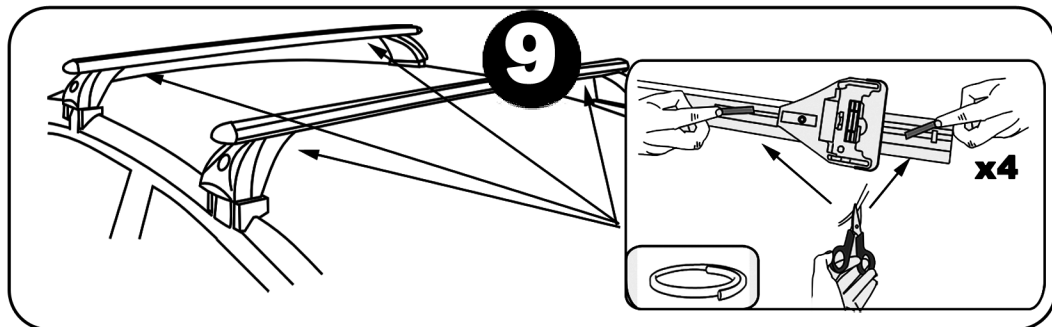
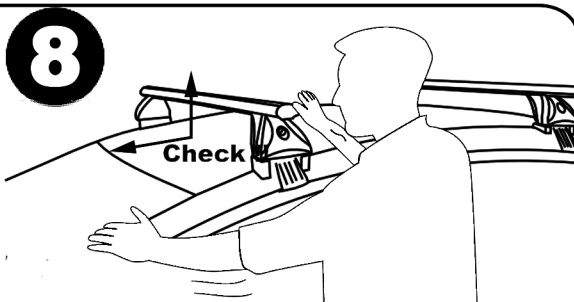
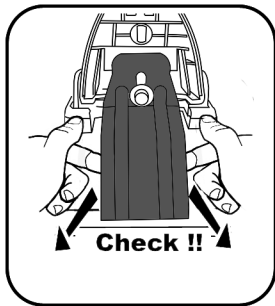
Push

OPTION 156.002

F Serrer alternativement chaque côté
E Alternare il serraggio delle viti
I Serrare alternativamente
P Aperte alternadamente
GB Tighten alternately
D Die Schrauben abwechselnd anziehen

NL Afwisselend aan de linker en de rechterkant aandraaien
S Dra åt växelvis
FIN Kierrä vuorotellen
EST Pinguldage vaheldumisi
LAT Pievelciēt pamāšus
LIT Uzsukinėkite pakaitomis
PL Sruby dokrecaj naprzemiennie

CZ Pokretla bagaznika dokrecaj dokrecaj naprzemiennie
SK Dotahujte striedavo
SLO Privijajte izmenicno
HR Naizmjerno zategnite
HU Egymástól függetlenül szorítandó
TR Dönüştürmeli sıkın



Démontage - Desmontaje - Smontaggio - Desmontagem - Disassembly - Demontage

