

TYPE A

Ref.: 156259



ISO/PAS 11154



CITY CRASH TEST





n° 259



Hyundai Ix 20
Kia Venga

5
5

11/2010->
02/2010->

 +  } **5 kg** + **xx Kg** = **75 kg max**

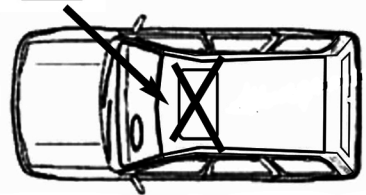
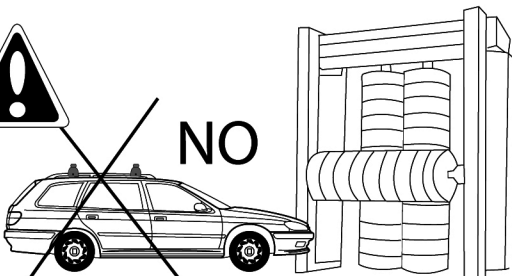
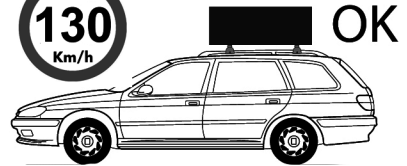
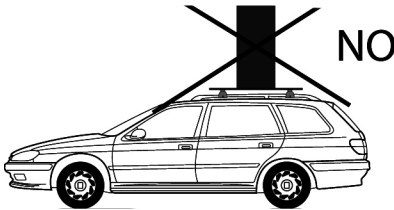
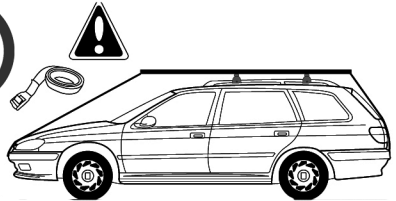
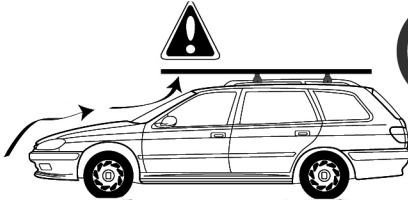
Ne pas dépasser la charge maximale des barres. Ne pas dépasser la charge maximale indiquée par le constructeur du véhicule.

Non superare il carico massimo delle barre portattuto. Non superare il carico massimo indicato dal costruttore del veicolo.

Carga máxima admisible indicada en la caja de las barras de techo. No exceda la carga máxima permitida por el fabricante del vehículo.

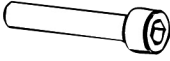
Maximum allowable load indicated on the box of roof bars. Do not exceed the maximum load allowed by the vehicle manufacturer.

Maximal zulässige Belastung angegeben auf der box der dachreling. Überschreiten sie nicht die maximale belastung durch den fahrzeughersteller zugelassen.

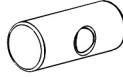




M6x50



4762.650
x4



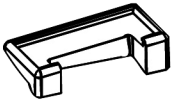
162100001
x4



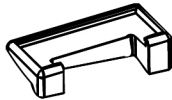
659106
x4



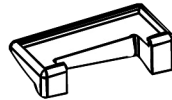
100005
x1



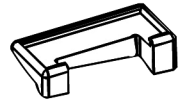
x1
1120201



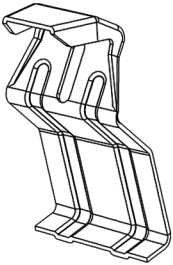
x1
1120202



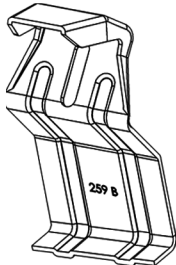
x1
1120203



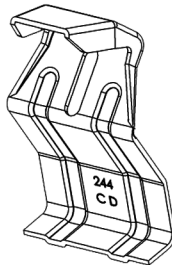
x1
1120204



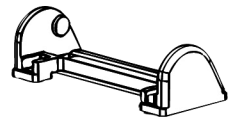
259A
x1



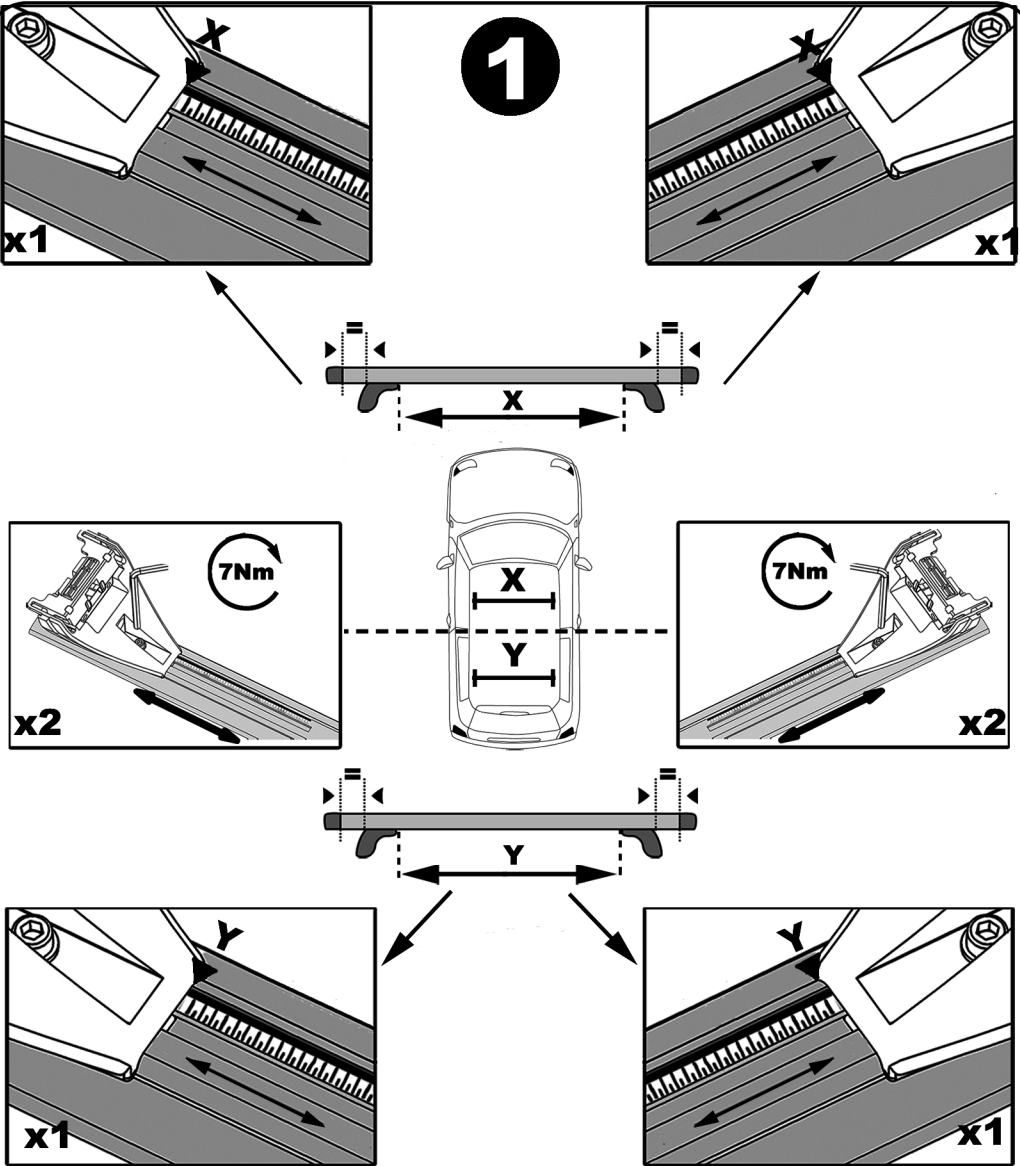
259B
x1



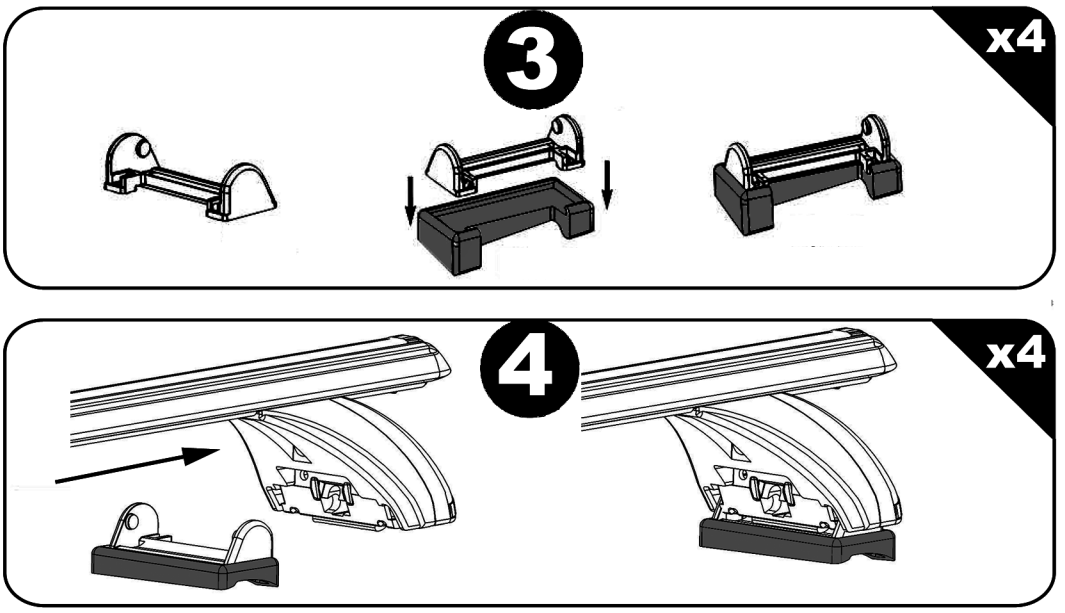
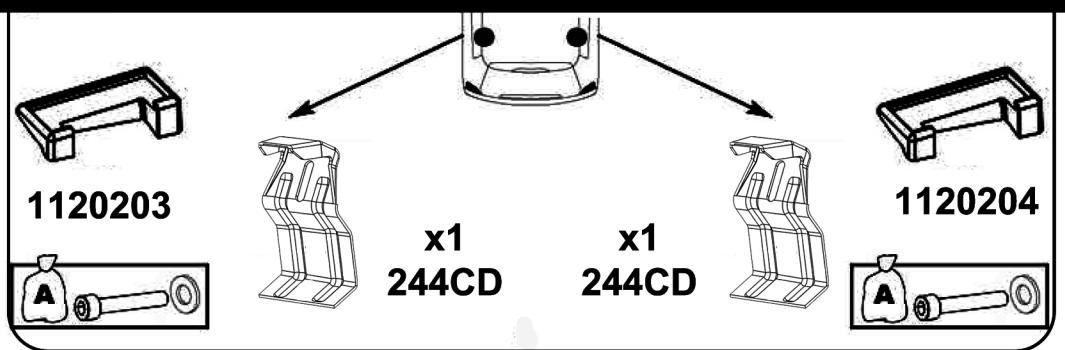
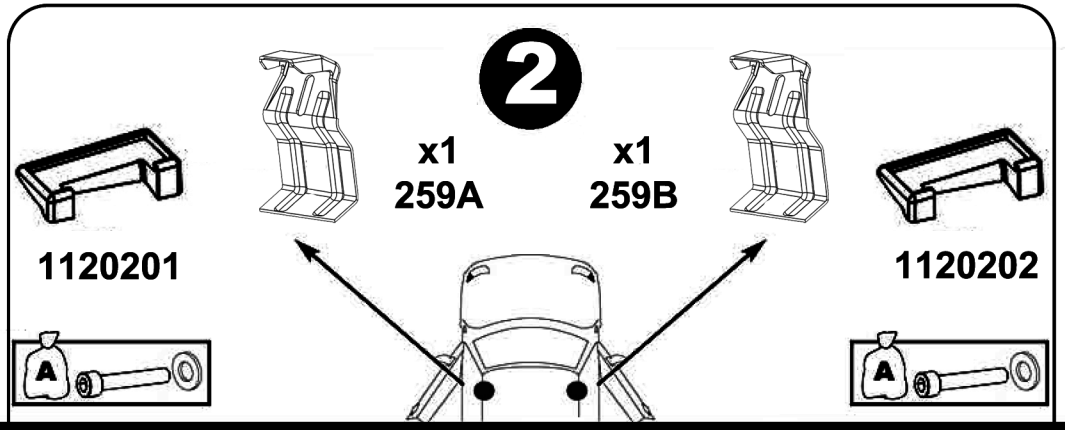
244CD
x2



214800001
x4



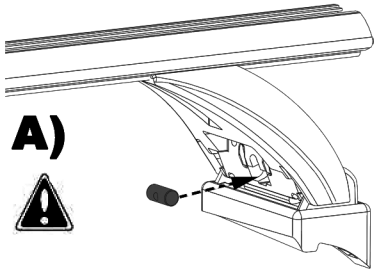
	X	Y
Hyundai iX20	95,5 cm	91 cm
Kia Venga	95,5 cm	91 cm



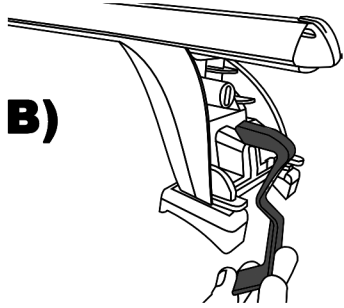
5

x4

A)



B)

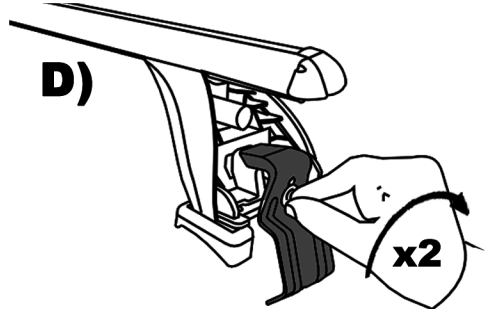


C)



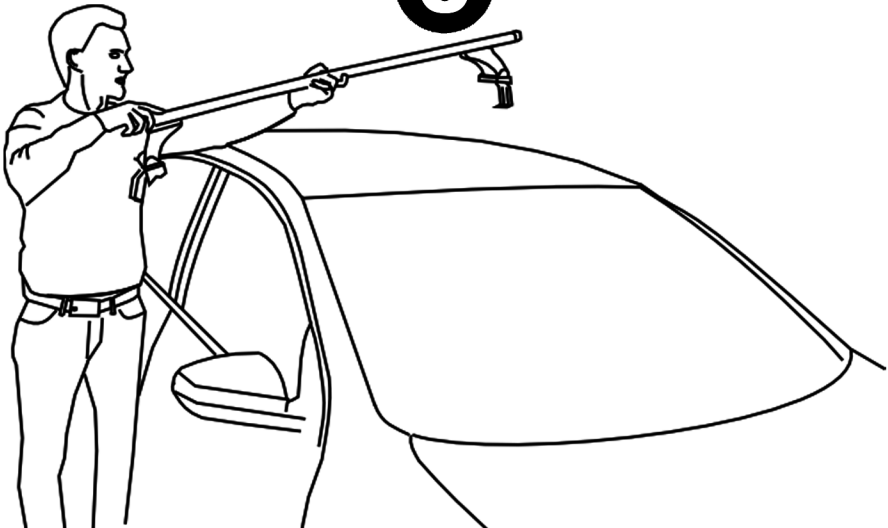
D)

x2

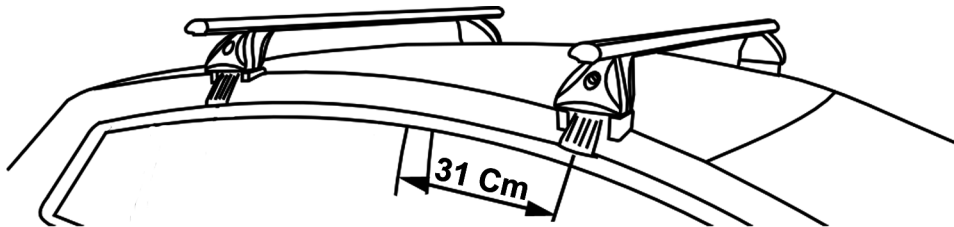


6

x2

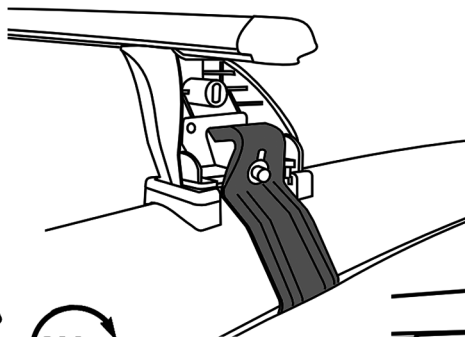


7



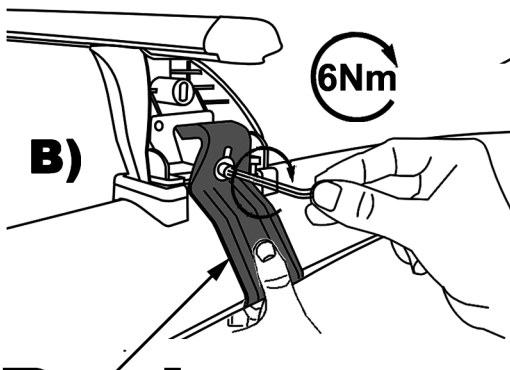
x2

A)

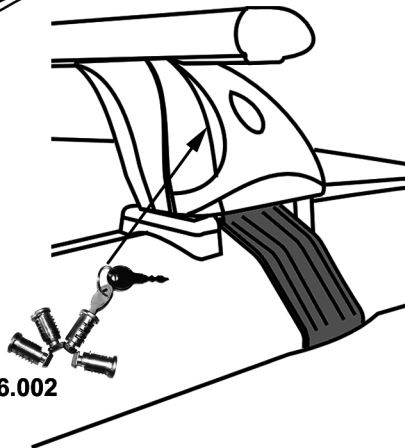


6Nm

B)



C)



Push

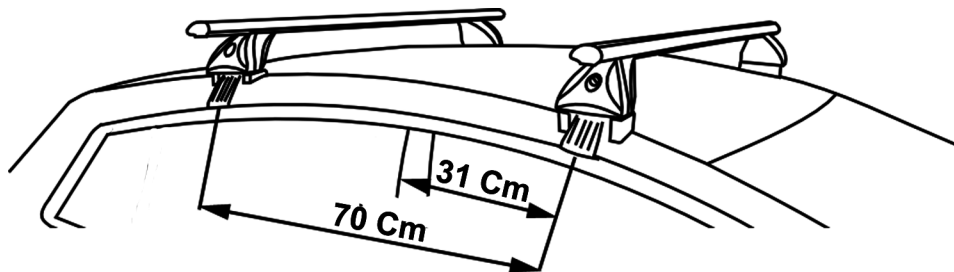
OPTION 156.002

F Serrer alternativement chaque côté
E Alternare il serraggio delle viti
I Serrare alternativamente
P Aperte alternadamente
GB Tighten alternately
D Die Schrauben
 abwechselnd anziehen

NL Afwisselend aan de linker en de
 rechterkant aandraaien
S Dra åt växelvis
FIN Kierrä vuorotellen
EST Pinguldage vaheldumisi
LAT Pievelciēt pamāšus
LIT Uzsukinkite pakaitomis
PL Sruby dokrecaj naprzemiennie

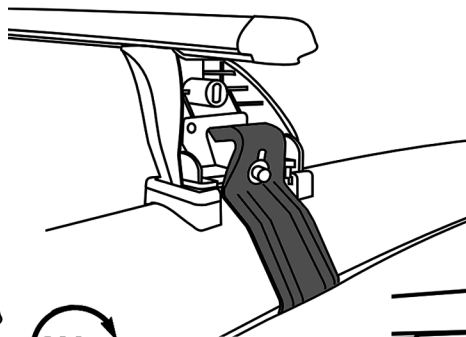
CZ Pokretla bagaznika dokrecaj dokrecaj
 naprzemiennie
SK Dotahujte striedavo
SLO Privijajte izmenicno
HR Naizmjenicno zategnite
HU Egymástól függetlenül szorítandó
TR Dönüşümlü sikin

8



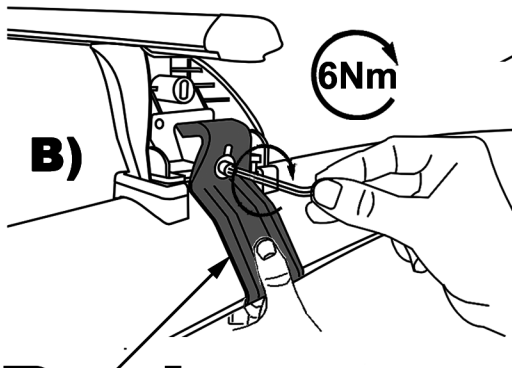
x2

A)

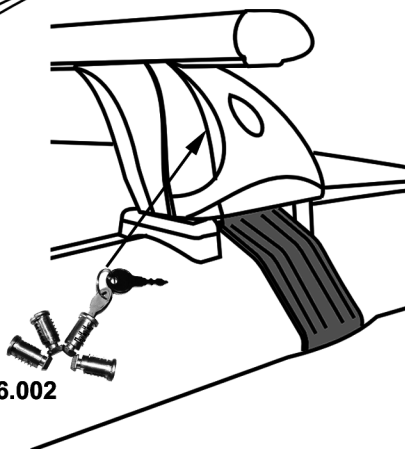


6Nm

B)



C)



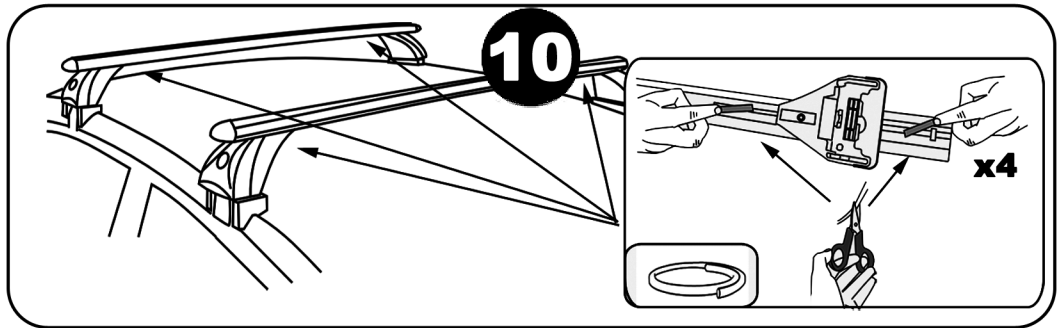
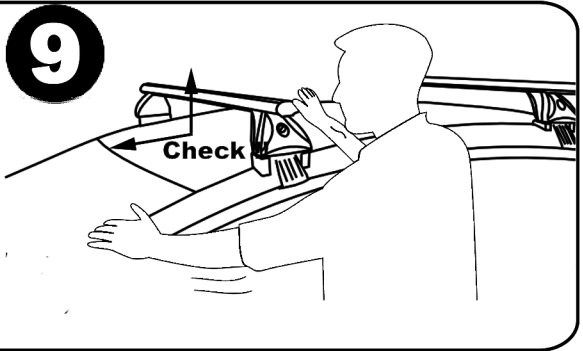
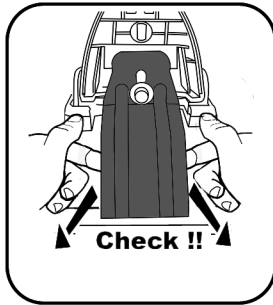
Push

OPTION 156.002

- F** Serrer alternativement chaque côté
E Alternare il serraggio delle viti
I Serrare alternativamente
P Aperte alternadamente
GB Tighten alternately
D Die Schrauben abwechselnd anziehen

- NL** Afwisselend aan de linker en de rechterkant aandraaien
S Dra åt växelvis
FIN Kierrä vuorotellen
EST Pinguldage vaheldumisi
LAT Pīvelciēt pamāšus
LIT Užsukinkite pakaitomis
PL Sruby dokrecaj naprzemiennie

- CZ** Pokretla bagaznika dokrecaj dokrecaj naprzemiennie
SK Dotahujte striedavo
SLO Privijajte izmenicno
HR Naizmjenično zategnite
HU Egymástól függetlenül szorítandó
TR Dönüşümlü sıkın



Démontage - Desmontaje - Smontaggio - Desmontagem - Disassembly - Demontage

