

Ref.: 156262



ISO/PAS 11154



CITY CRASH TEST




n° 262



Volkswagen Passat

5

11/2000->05/2005

 } **5 kg** + xx Kg = **75 kg max**

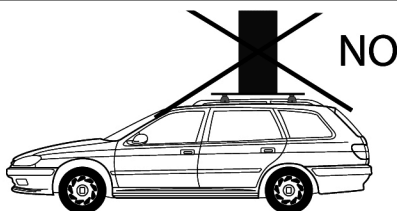
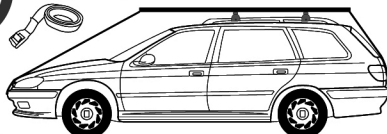
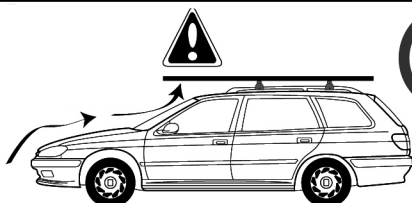
Ne pas dépasser la charge maximale des barres. Ne pas dépasser la charge maximale indiquée par le constructeur du véhicule

Non superare il carico massimo delle barre portatutto. Non superare il carico massimo indicato dal costruttore del veicolo

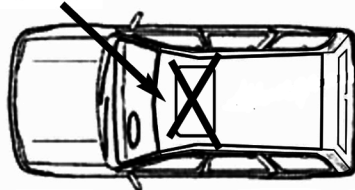
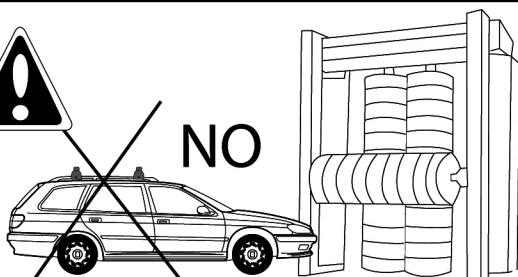
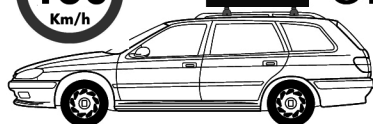
Carga máxima admisible indicada en la caja de las barras de techo. No exceda la carga máxima permitida por el fabricante del vehículo.

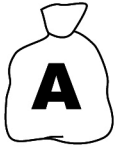
Maximum allowable load indicated on the box of roof bars. Do not exceed the maximum load allowed by the vehicle manufacturer.

Maximal zulässige belastung angegeben auf der box der dachreling. Überschreiten sie nicht die maximale belastung durch den fahrzeughersteller zugelassen.

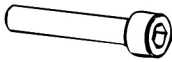


OK

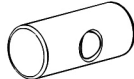




M6x35



x4



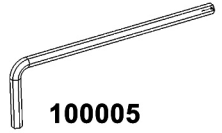
162100001

x4



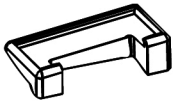
659306

x4



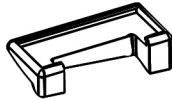
100005

x1



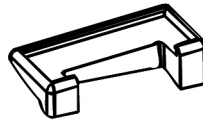
x1

1126201



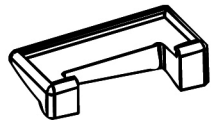
x1

1126202



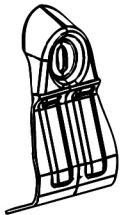
x1

1126203



x1

1126204



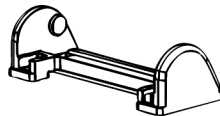
x2

262AB



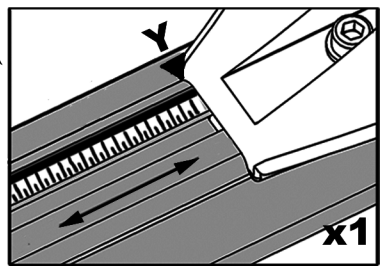
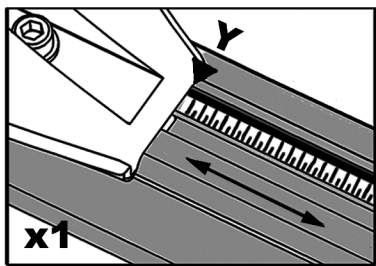
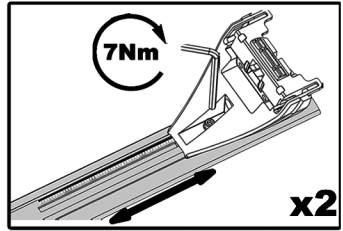
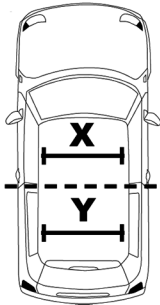
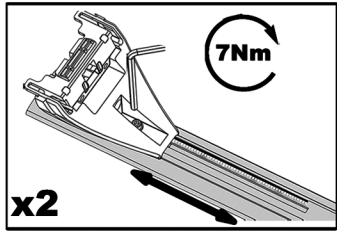
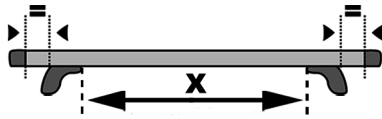
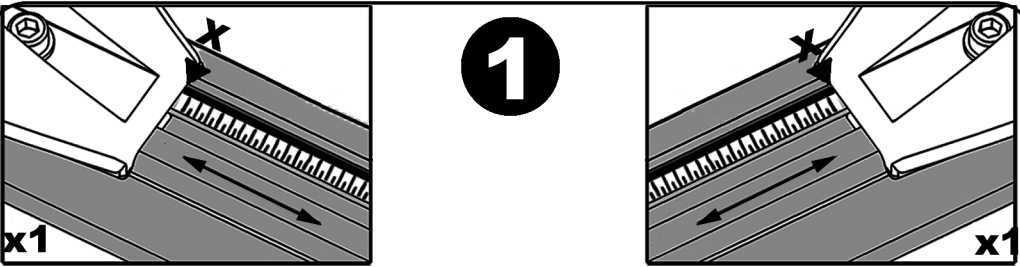
x2

262CD

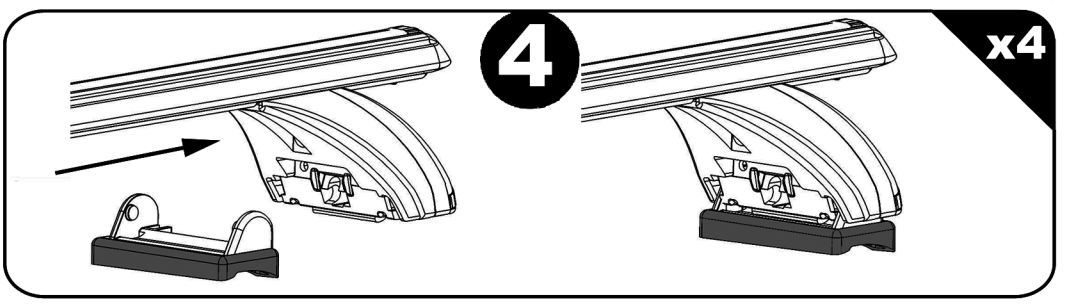
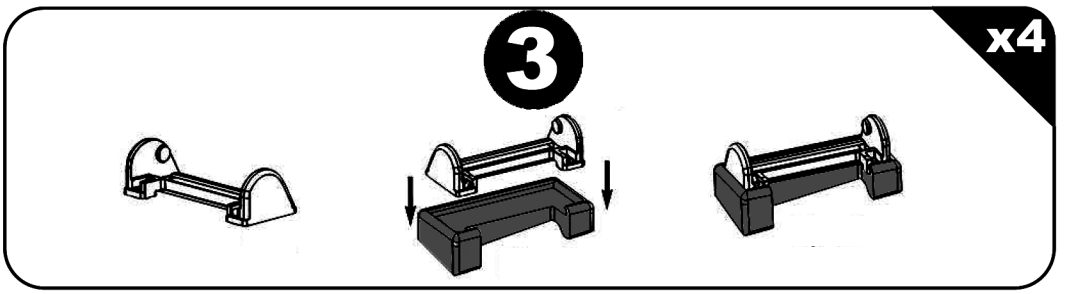
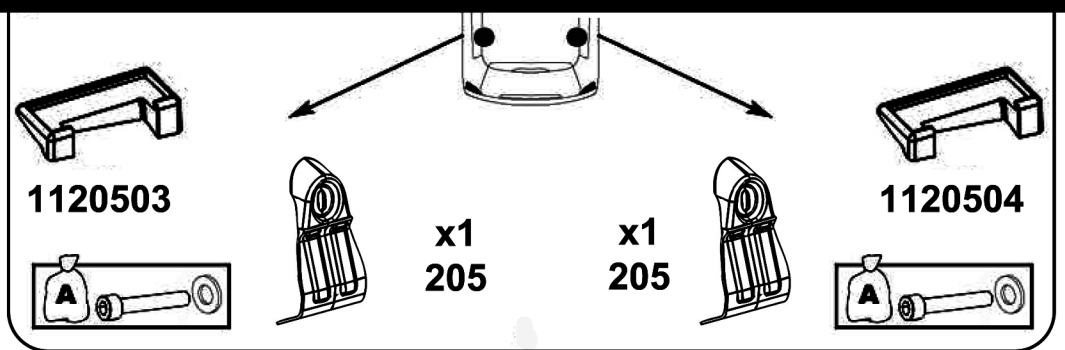
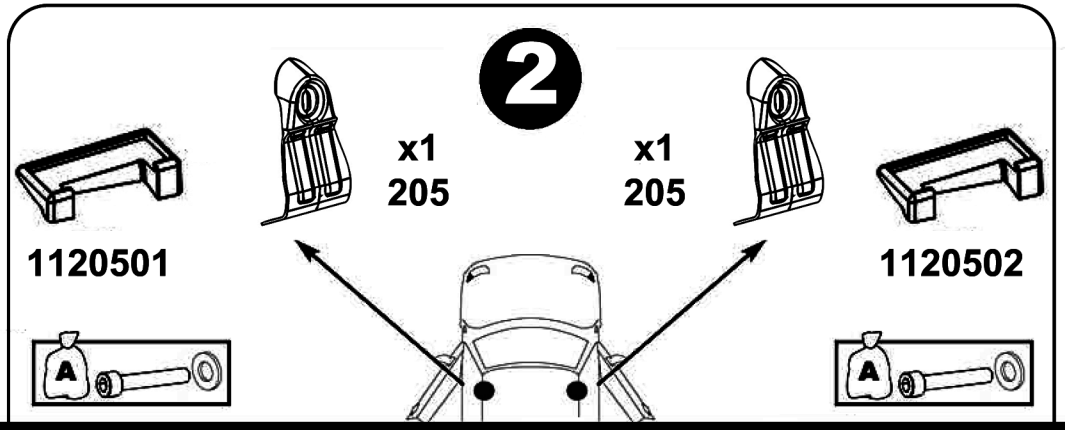


x4

214800001



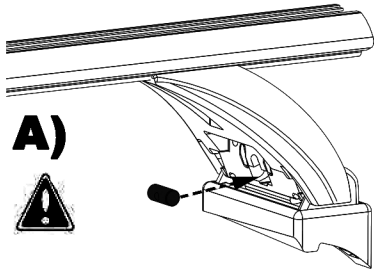
	X	Y
Volkswagen passat V	85 cm	85,5 cm



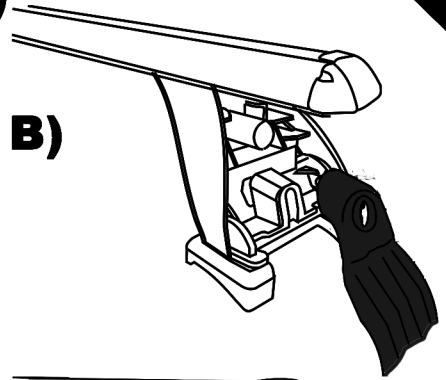
5

x4

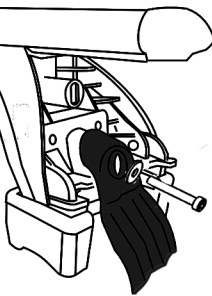
A)



B)

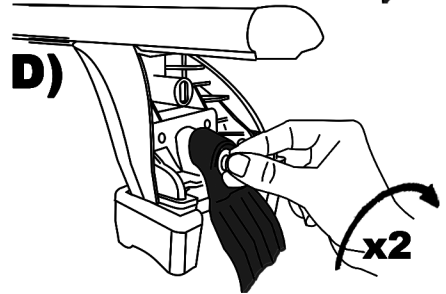


C)



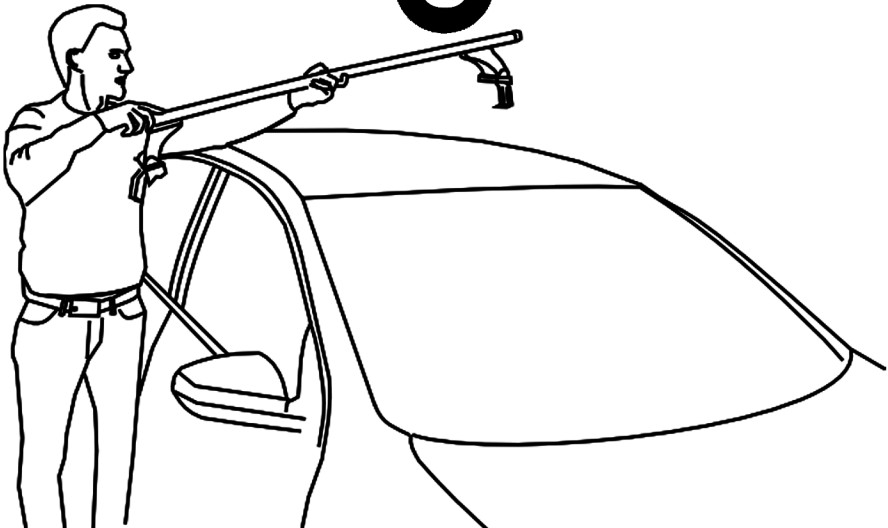
D)

x2

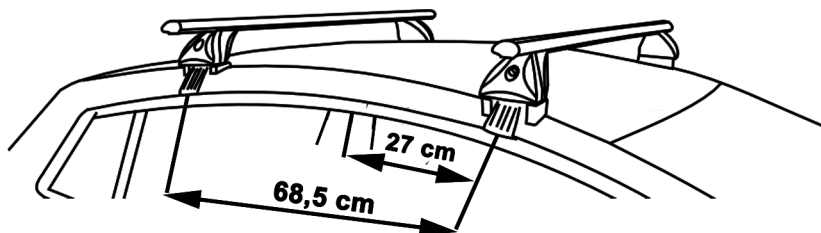


6

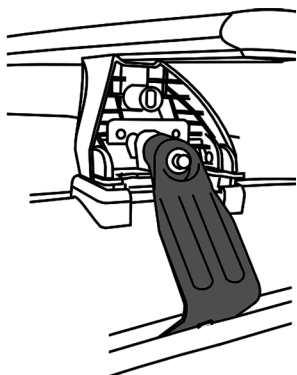
x2



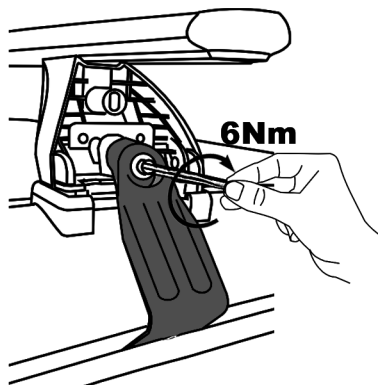
8



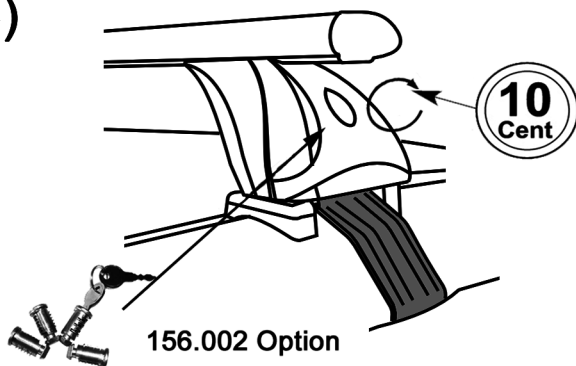
A)



B)



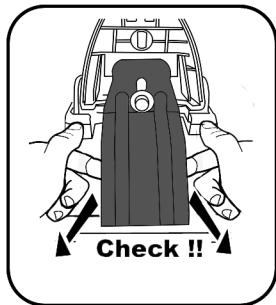
C)



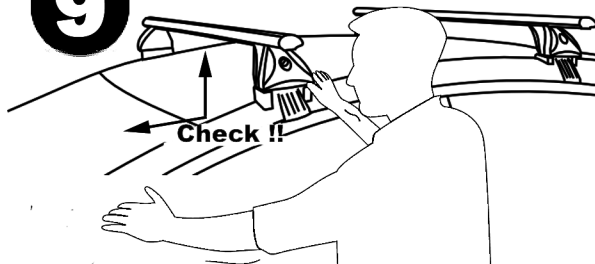
F Serrer alternativement chaque côté
E Alternare il serraggio delle viti
I Serrare alternativamente
GB Aperte alternadamente
P Tighten alternately
D Die Schrauben abwechselnd anziehen

NL Afwisselend aan de linker en de rechterkant aandraaien
S Dra åt växelvis
FIN Kierrä vuorotellen
EST Pinguldage vaheldumisi
LAT Pievelciēt pamāsus
LIT Uzsukinėkite pakaitomis
PL Sruby dokrecaj naprzemiennie

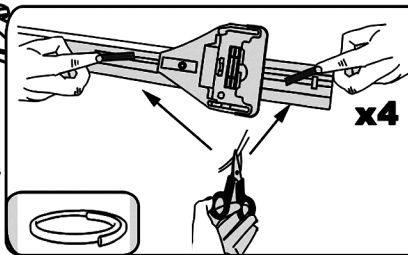
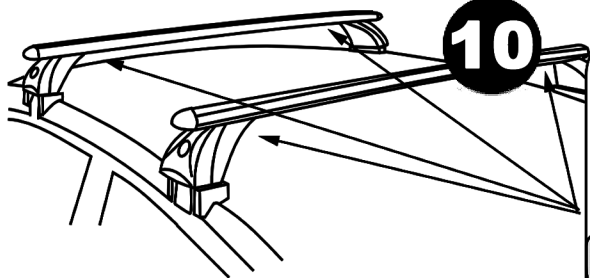
CZ Pokretla bagaznika dokrecaj dokrecaj naprzemiennie
SK Dotahujte striedavo
SLO Privijajte izmenicno
HR Naizmjenicno zategnite
HU Egymástól függetlenül szorítandó
TR Dönüşümlü sıkın



9



10



Démontage - Desmontaje - Smontaggio - Desmontagem - Disassembly - Demontage

A)

