

TYPE A

Ref.: 156263



ISO/PAS 11154



CITY CRASH TEST



n° 263



Ford Focus III

5

03/2011->

Ford Focus III s.w (no rails)

5

03/2011->



5 kg + xx Kg = 75 kg max

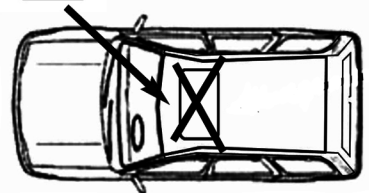
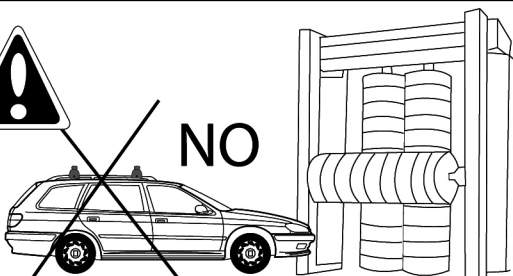
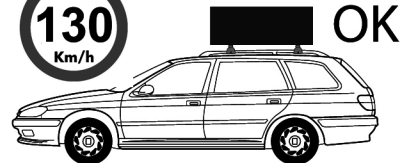
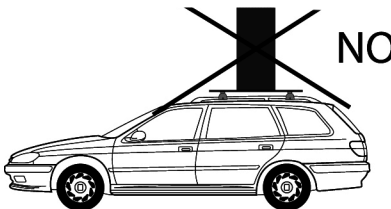
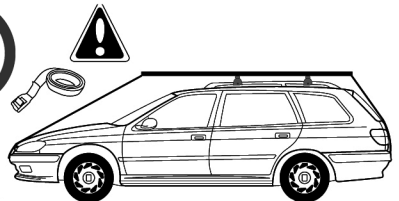
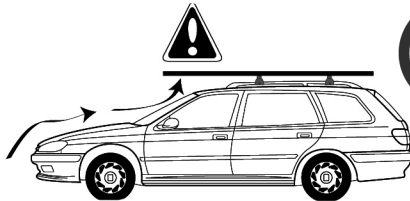
Ne pas dépasser la charge maximale des barres. Ne pas dépasser la charge maximale indiquée par le constructeur du véhicule

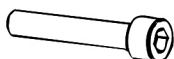
Non superare il carico massimo delle barre portatutto. Non superare il carico massimo indicato dal costruttore del veicolo

Carga máxima admisible indicada en la caja de las barras de techo. No exceda la carga máxima permitida por el fabricante del vehículo.

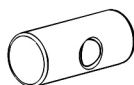
Maximum allowable load indicated on the box of roof bars. Do not exceed the maximum load allowed by the vehicle manufacturer.

Maximal zulässige belastung angegeben auf der box der dachreling. Überschreiten sie nicht die maximale belastung durch den fahrzeughersteller zugelassen.





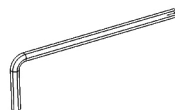
M6x50
x4



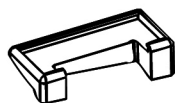
162100001
x4



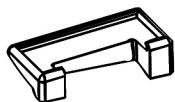
6591.06
x4



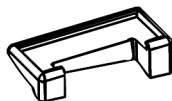
100005
x1



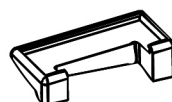
x1
1123501



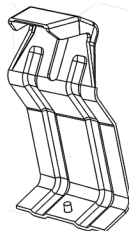
x1
1123502



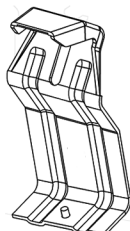
x1
1122503



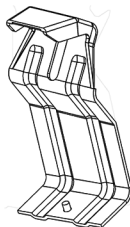
x1
1122504



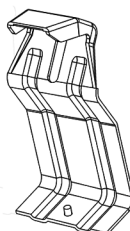
x1
248A



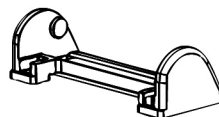
x1
248B



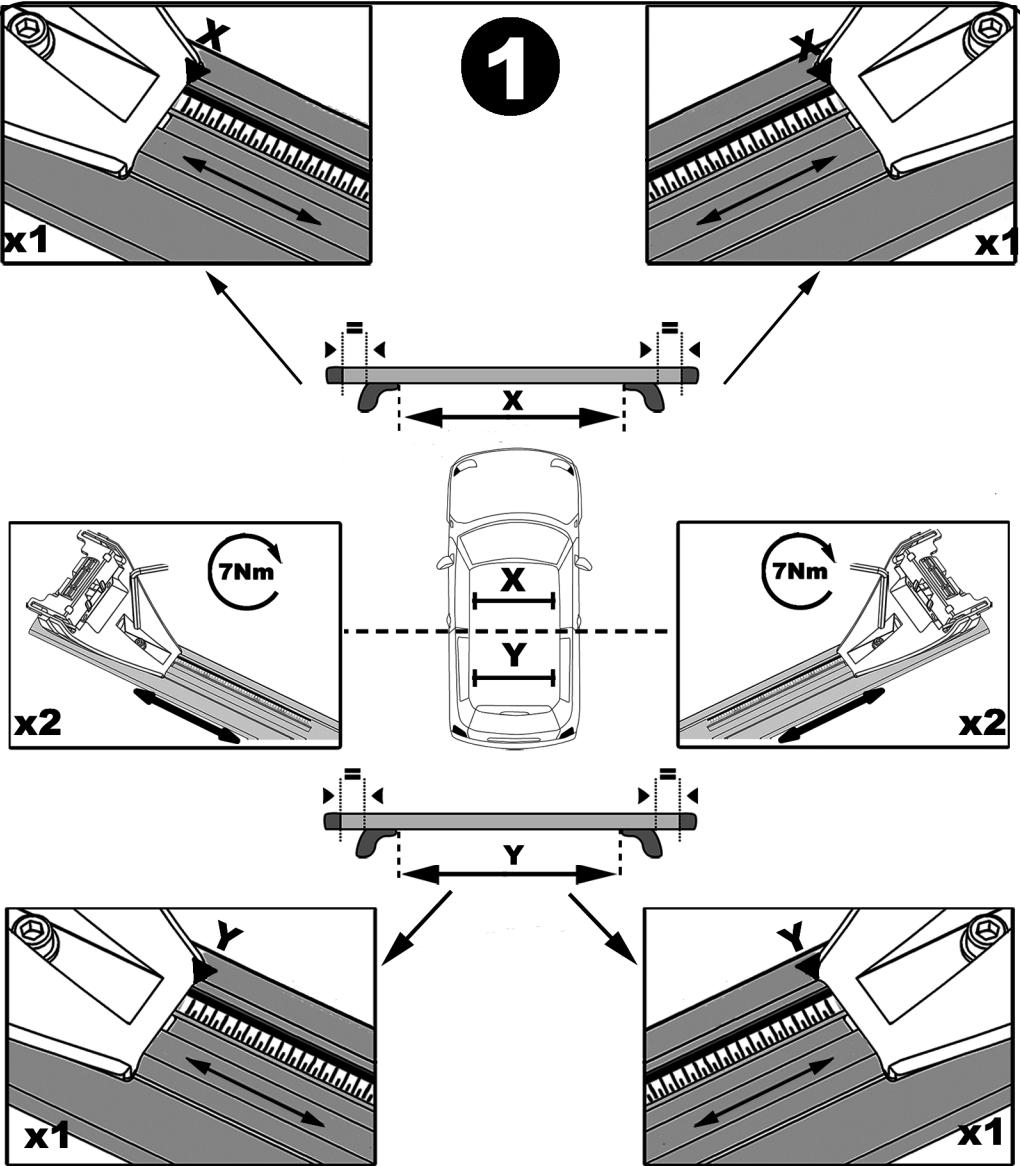
x1
248C



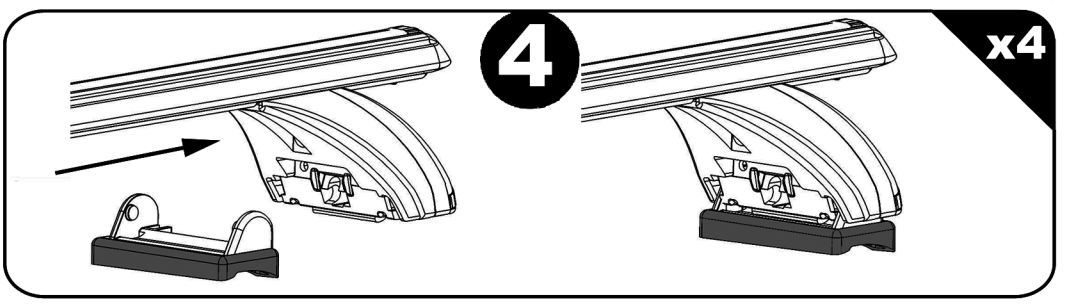
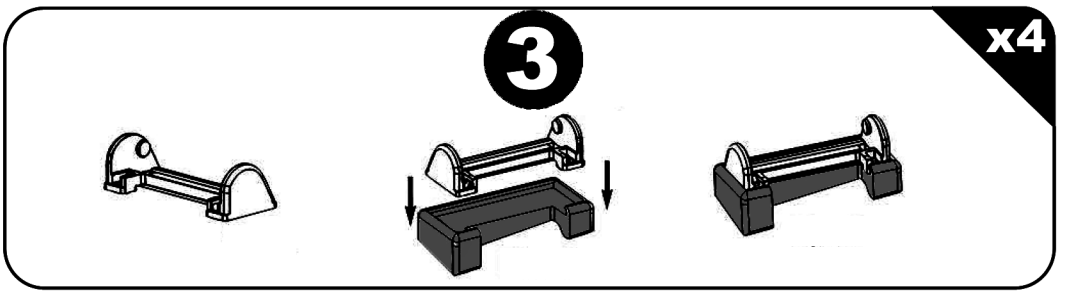
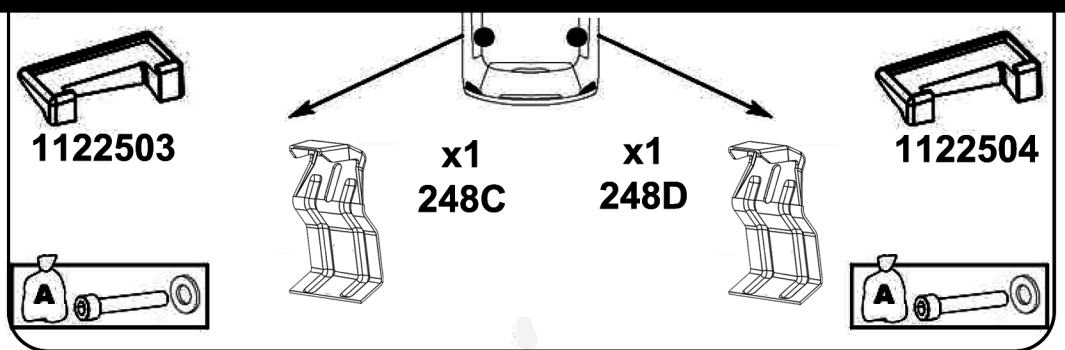
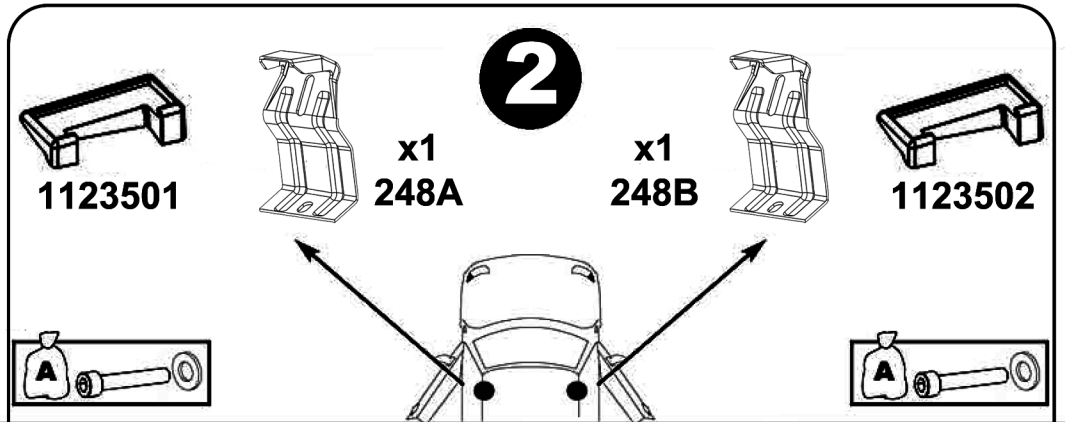
x1
248D



x4
214800001



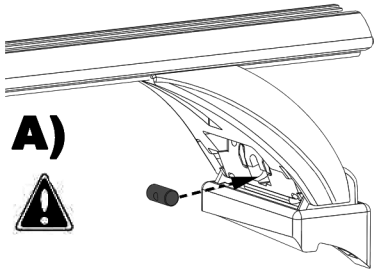
	X	Y
Ford Focus III	91 cm	89,5 cm
Ford Focus III S.w	91 cm	89,5 cm



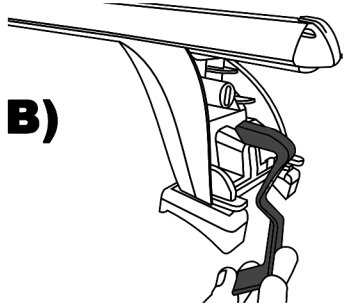
5

x4

A)



B)

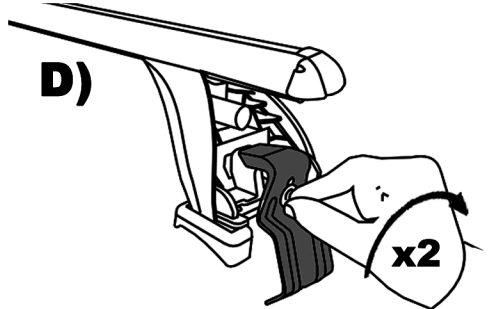


C)



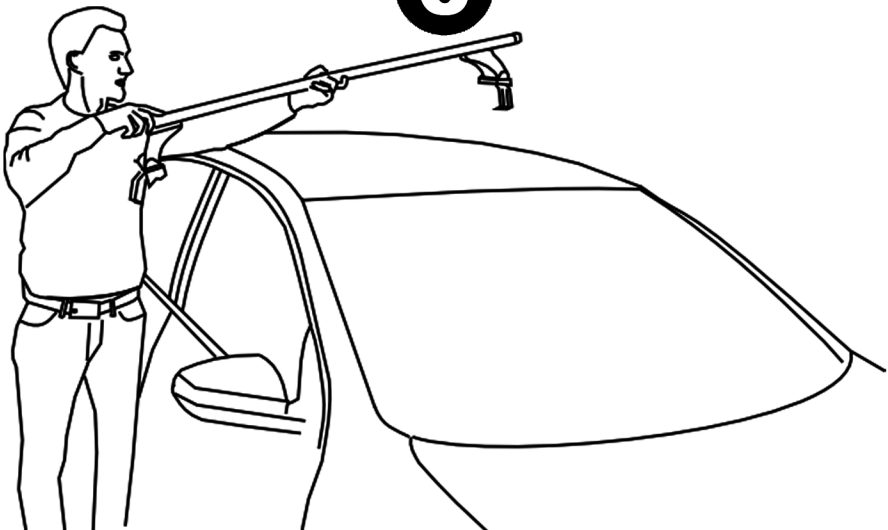
D)

x2



6

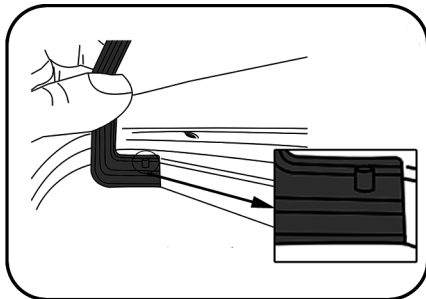
x2



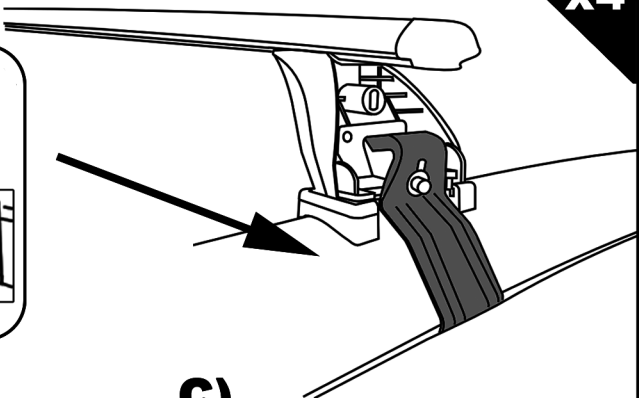
7



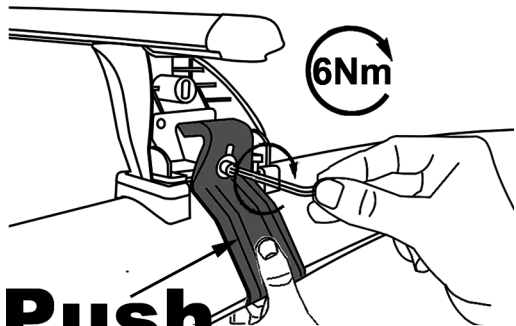
A)



x4

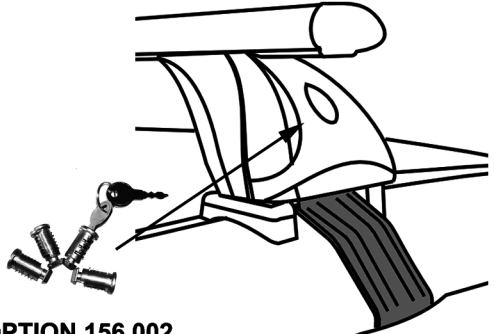


B)



6Nm

C)



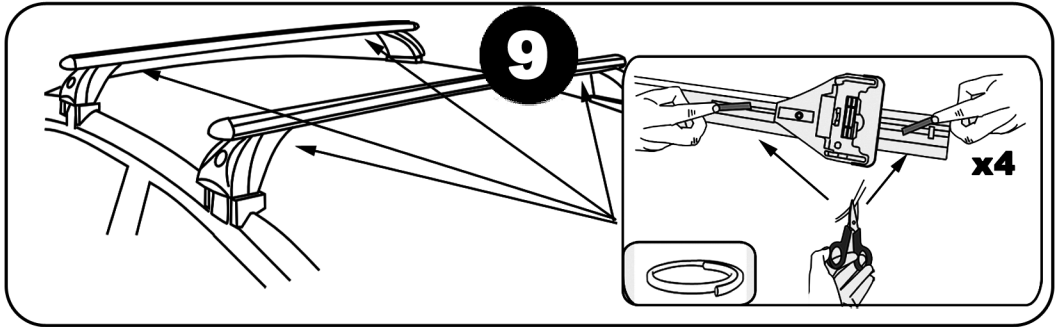
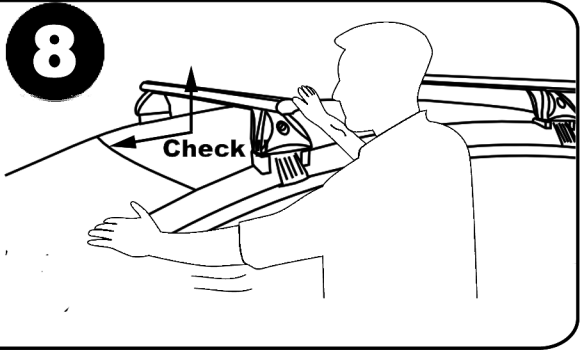
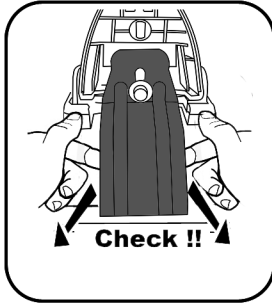
Push

OPTION 156.002

- F** Serrer alternativement chaque côté
- E** Alternare il serraggio delle viti
- I** Serrare alternativamente
- P** Aperte alternadamente
- GB** Tighten alternately
- D** Die Schrauben abwechselnd anziehen

- NL** Afwisselend aan de linker en de rechterkant aandraaien
- S** Dra åt växelvis
- FIN** Kierrä vuorotellen
- EST** Pinguldage vaheldumisi
- LAT** Pievelciēt pamāšus
- LIT** Uzsukinėkite pakaitomis
- PL** Sruby dokrećaj naprzemiennie

- CZ** Pokretla bagaznika dokrećaj dokrećaj naprzemiennie
- SK** Dotahujte striedavo
- SLO** Privijajte izmenicno
- HR** Naizmjenicno zategnite
- HU** Egymástól függetlenül szorítandó
- TR** Dönüşümlü sıkın



Démontage - Desmontaje - Smontaggio - Desmontagem - Disassembly - Demontage

