

TYPE A

Ref.: 156264



ISO/PAS 11154



CITY CRASH TEST



n° 264



Volkswagen Golf IV

5

06/1998->06/2002



5 kg + xx Kg = 75 kg max

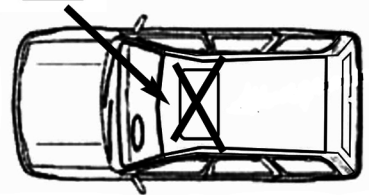
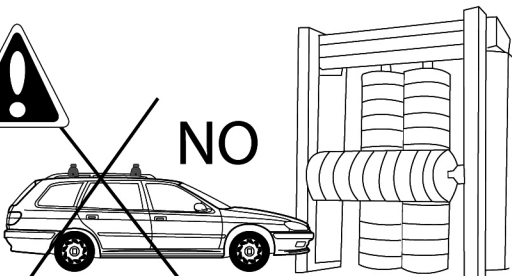
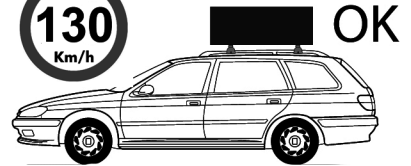
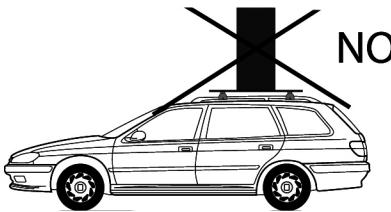
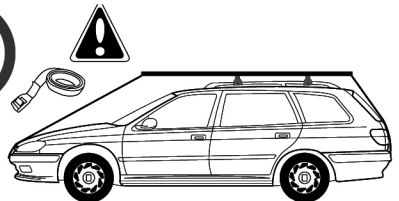
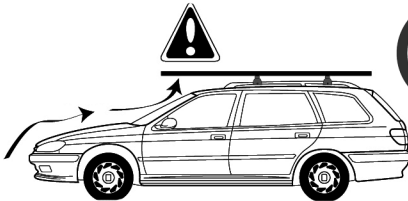
Ne pas dépasser la charge maximale des barres. Ne pas dépasser la charge maximale indiquée par le constructeur du véhicule

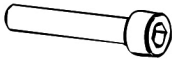
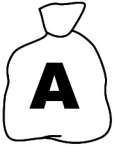
Non superare il carico massimo delle barre portattuto. Non superare il carico massimo indicato dal costruttore del veicolo

Carga máxima admisible indicada en la caja de las barras de techo. No exceda la carga máxima permitida por el fabricante del vehículo.

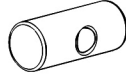
Maximum allowable load indicated on the box of roof bars. Do not exceed the maximum load allowed by the vehicle manufacturer.

Maximal zulässige belastung angegeben auf der box der dachreling. Überschreiten sie nicht die maximale belastung durch den fahrzeughersteller zugelassen.





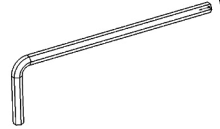
x4
M6x35



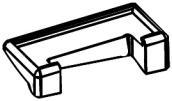
x4
162100001



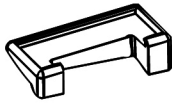
x4
659306



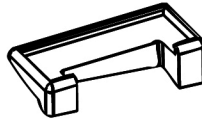
x1
100005



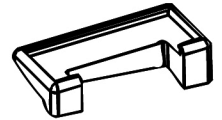
x1
1126401



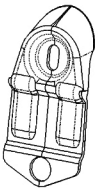
x1
1126402



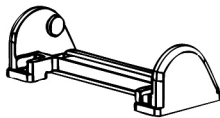
x1
1126403



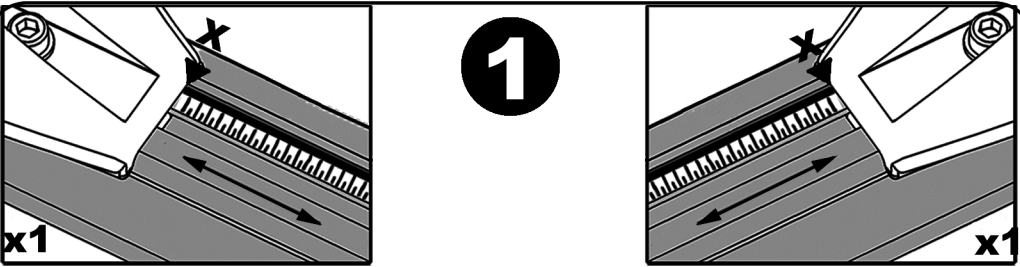
x1
1126404



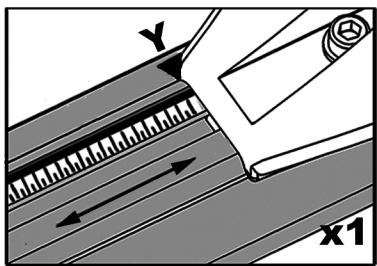
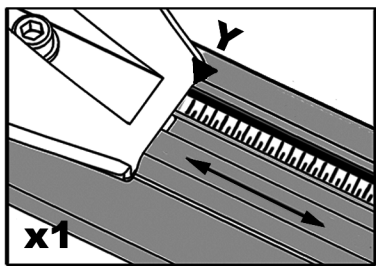
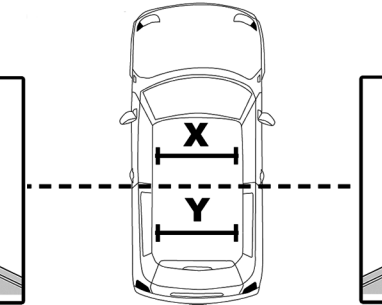
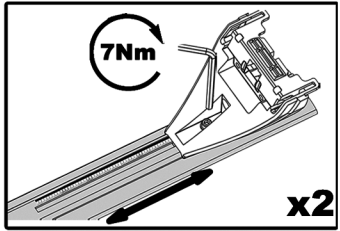
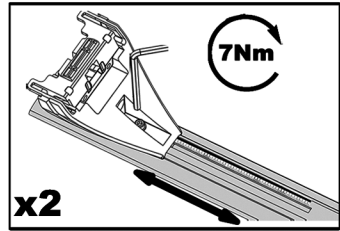
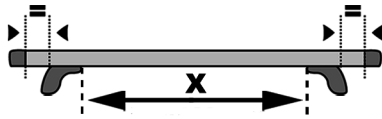
x4
264



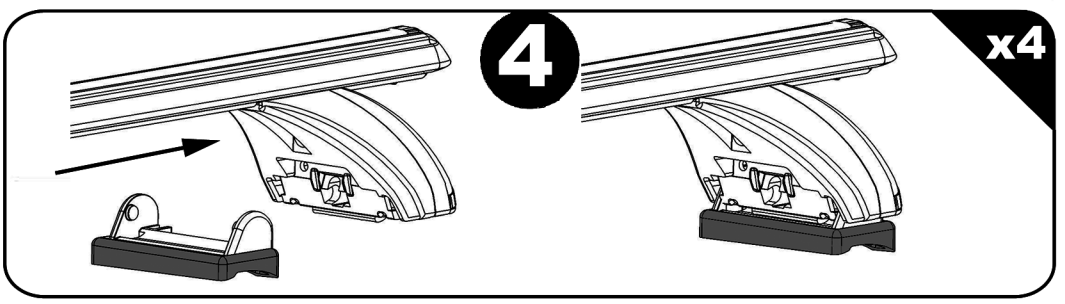
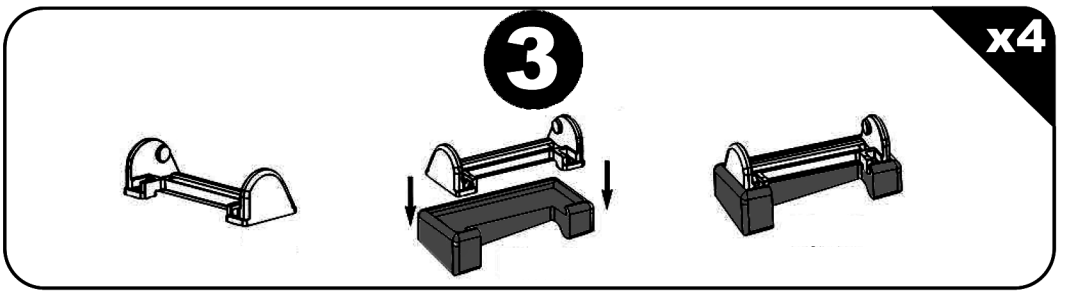
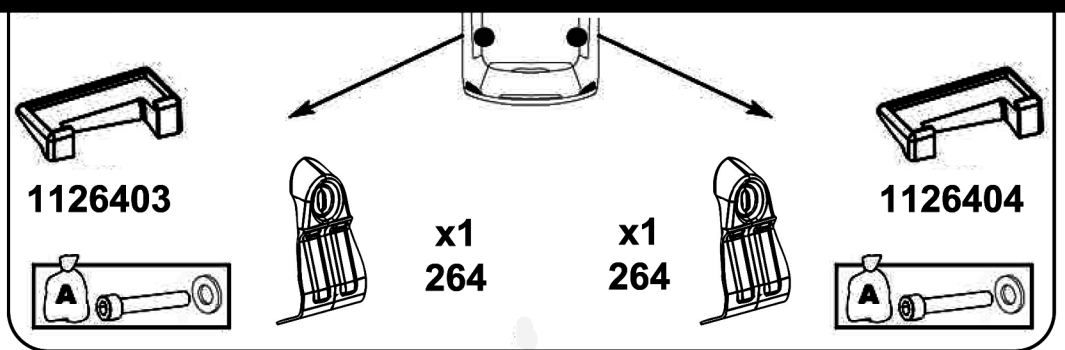
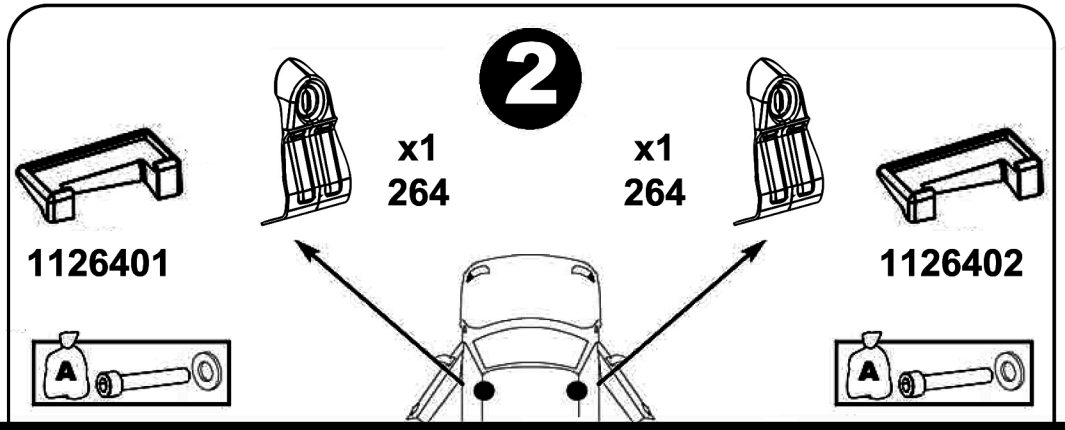
x4
214800001



1



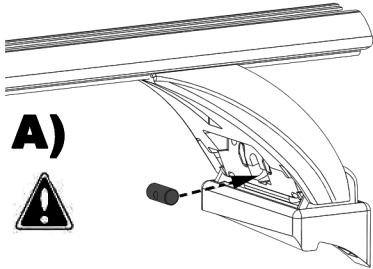
	X	Y
Volkswagen Golf IV	80,5 cm	74,5 cm



5

x4

A)



B)

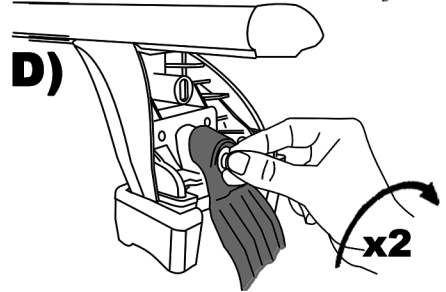


C)



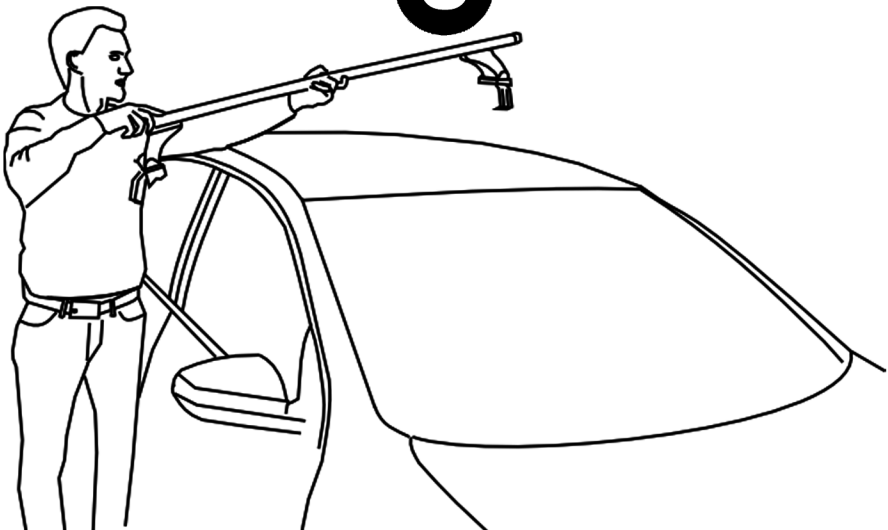
D)

x2



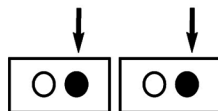
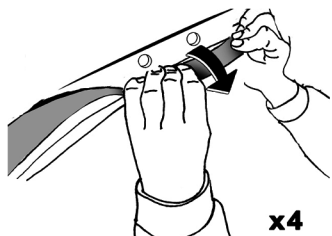
6

x2

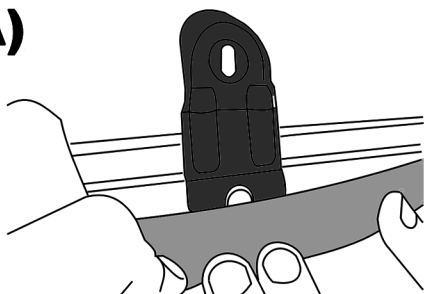


7

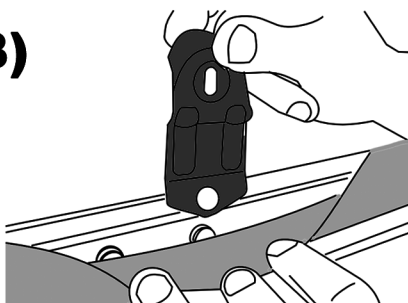
x4



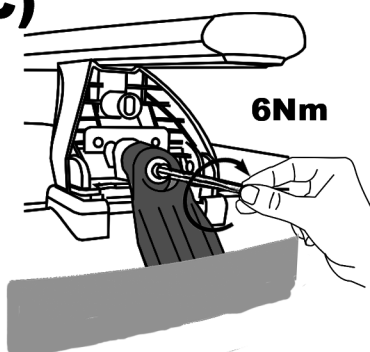
A)



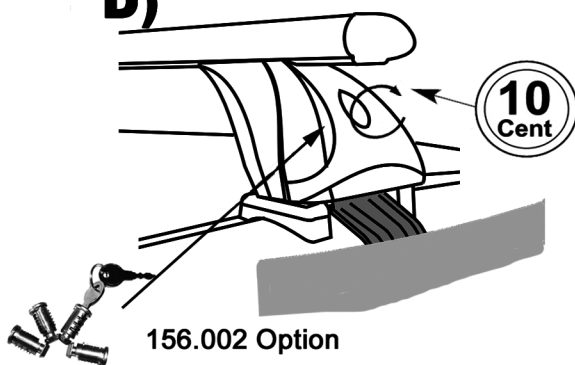
B)



C)



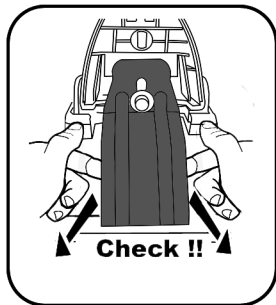
D)



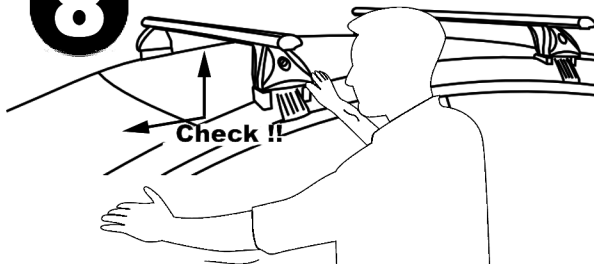
F Serrer alternativement chaque côté
E Alternare il serraggio delle viti
I Serrare alternativamente
P Aperte alternadamente
GB Tighten alternately
D Die Schrauben abwechselnd anziehen

NL Afwisselend aan de linker en de rechterkant aandraaien
S Dra åt växelvis
FIN Kierrä vuorotellen
EST Pinguldage vaheldumisi
LAT Pievelciēt pamāšus
LIT Uzsukinėkite pakaitomis
PL Sruby dokrecaj naprzemiennie

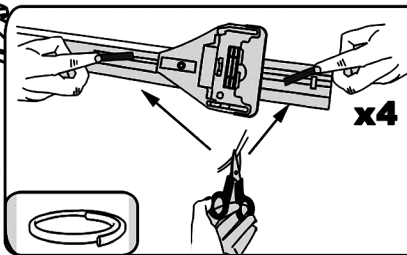
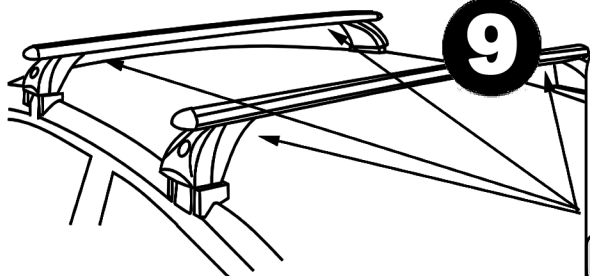
CZ Pokretla bagaznika dokrecaj dokrecaj naprzemiennie
SK Dotahujte striedavo
SLO Privijajte izmenicno
HR Naizmjenicno zategnite
HU Egymástól függetlenül szorítandó
TR Dönüşümlü sikiin



8



9



Démontage - Desmontaje - Smontaggio - Desmontagem - Disassembly - Demontage

A)

