

# TYPE A

## Ref.: 156265



ISO/PAS 11154



CITY CRASH TEST





# n° 265



**Nissan Juke**

**5**

**03/2010->**

 } **5 kg** +  = **75 kg max**

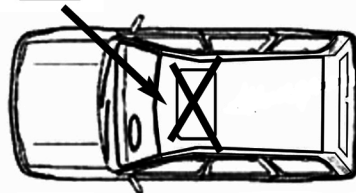
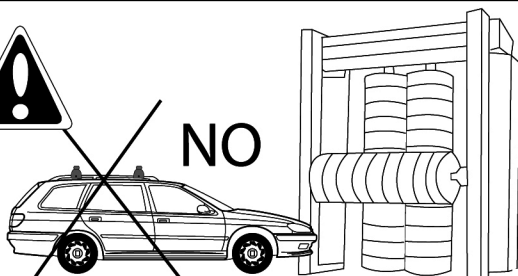
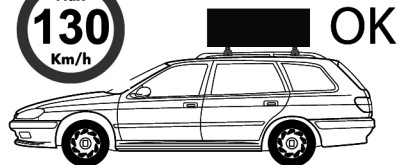
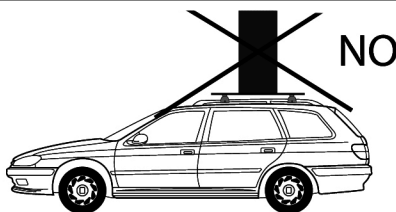
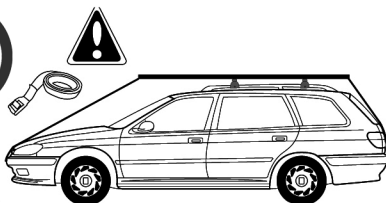
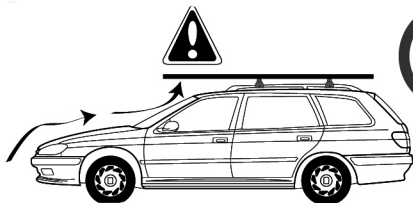
Ne pas dépasser la charge maximale des barres. Ne pas dépasser la charge maximale indiquée par le constructeur du véhicule

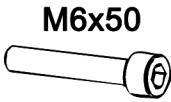
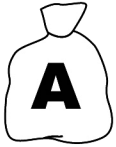
Non superare il carico massimo delle barre portatutto. Non superare il carico massimo indicato dal costruttore del veicolo

Carga máxima admisible indicada en la caja de las barras de techo. No exceda la carga máxima permitida por el fabricante del vehículo.

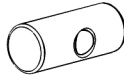
Maximum allowable load indicated on the box of roof bars. Do not exceed the maximum load allowed by the vehicle manufacturer.

Maximal zulässige belastung angegeben auf der box der dachreling. Überschreiten sie nicht die maximale belastung durch den fahrzeughersteller zugelassen.





M6x50  
4762.650  
x4



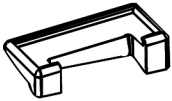
162100001  
x4



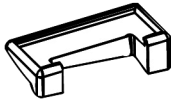
659106  
x4



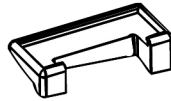
100005  
x1



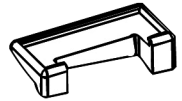
x1  
1122503



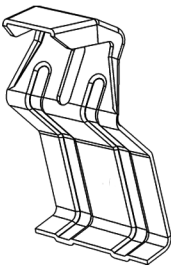
x1  
1122504



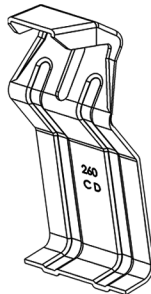
x1  
1123503



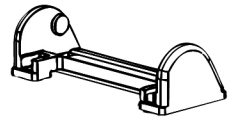
x1  
1123504



244CD  
x2



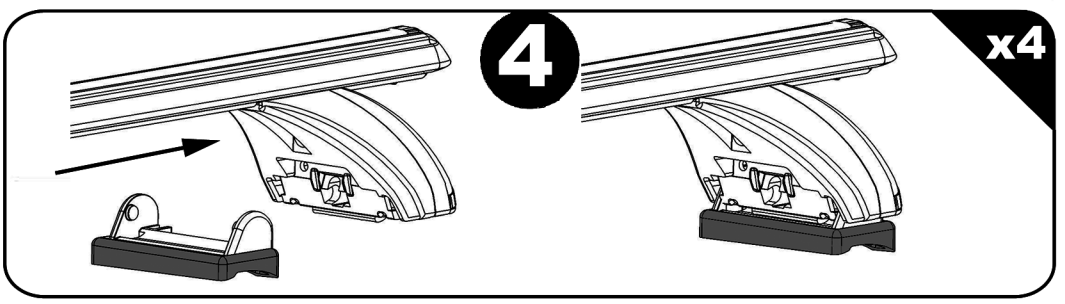
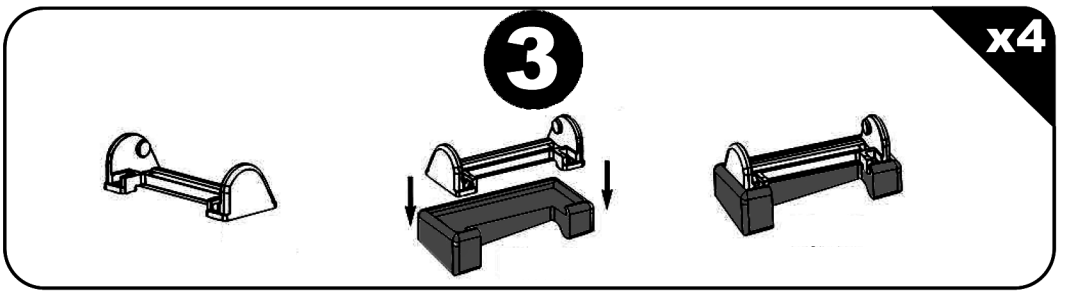
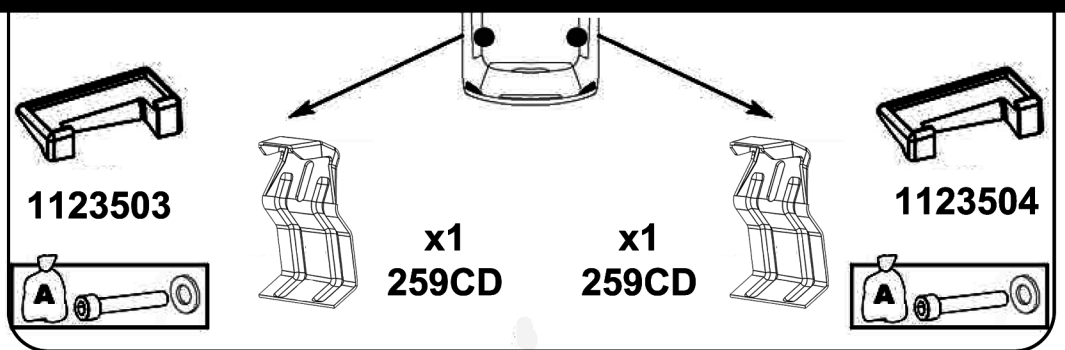
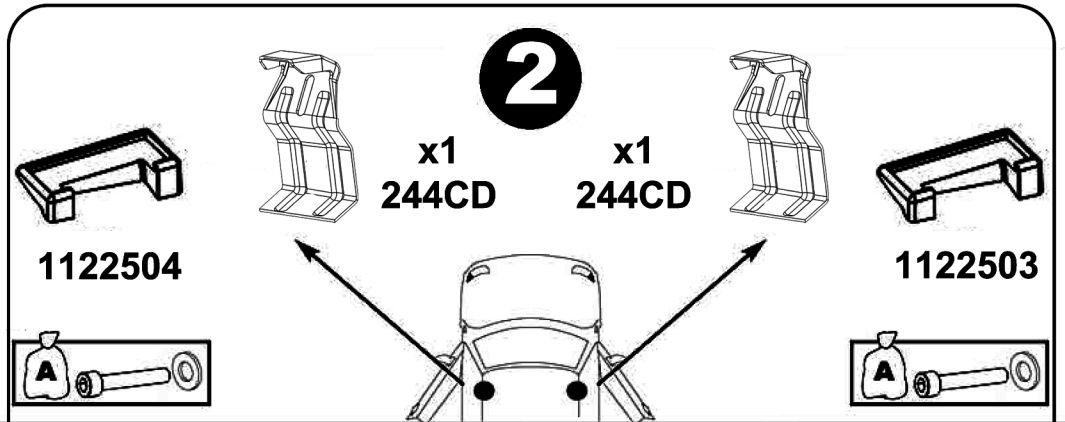
259CD  
x2



21480001  
x4



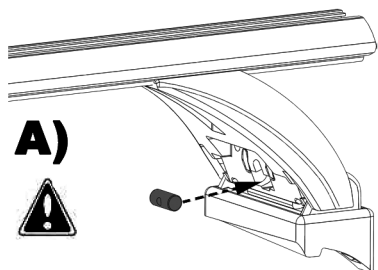
	X	Y
Nissan Juke	87,5 cm	79,5 cm



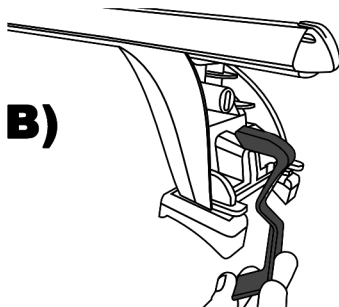
5

x4

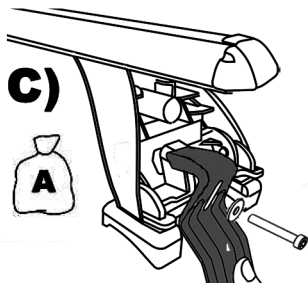
A)



B)

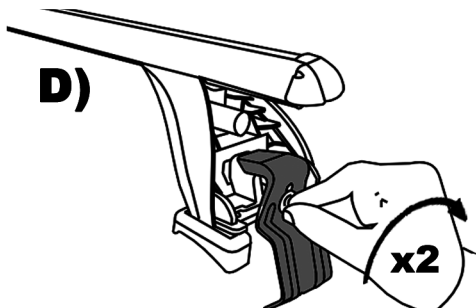


C)



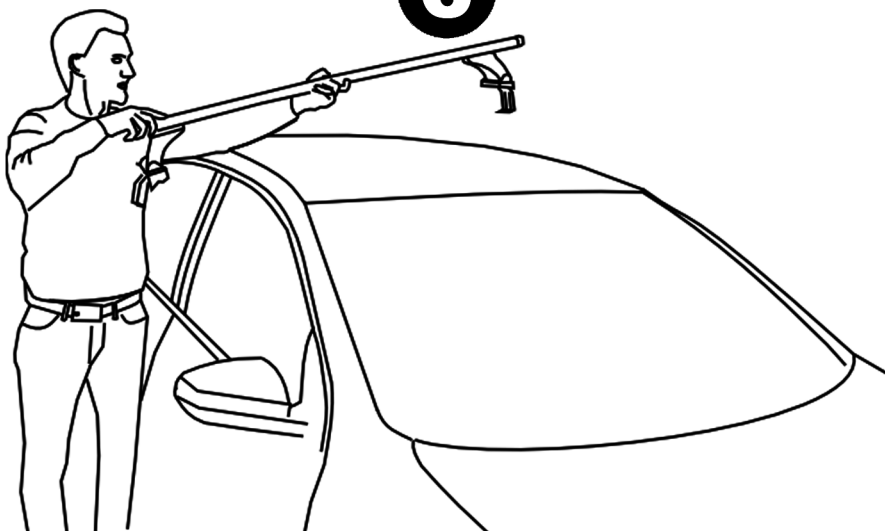
D)

x2

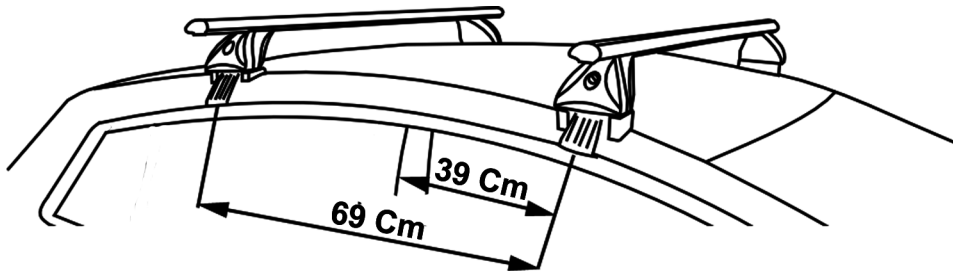


6

x2

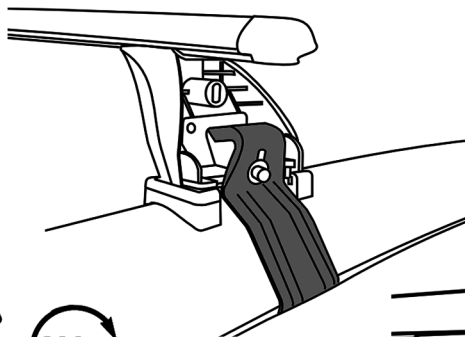


**7**



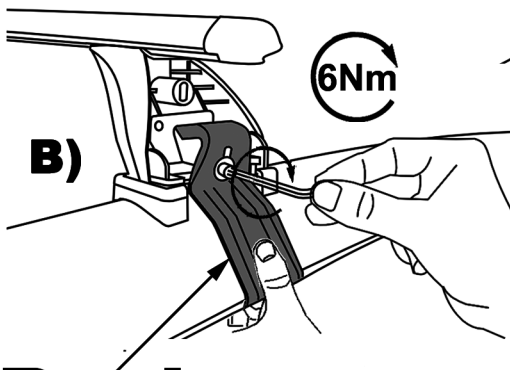
**x4**

**A)**

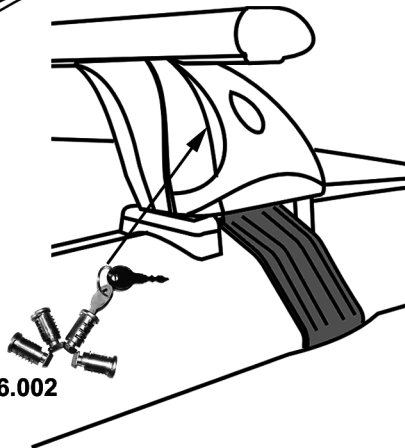


**6Nm**

**B)**



**C)**



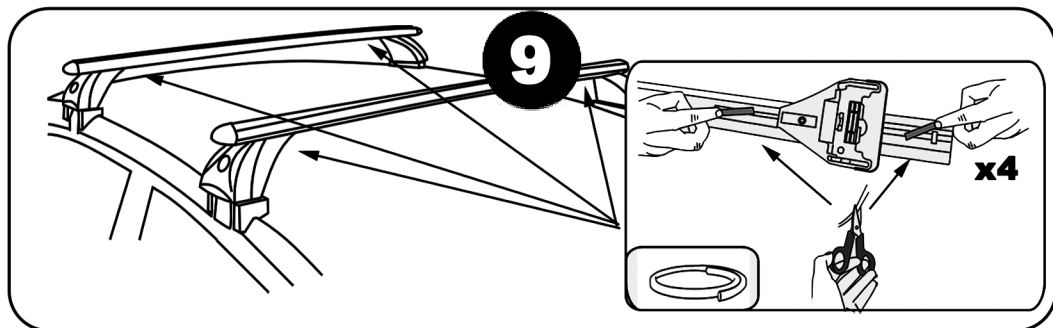
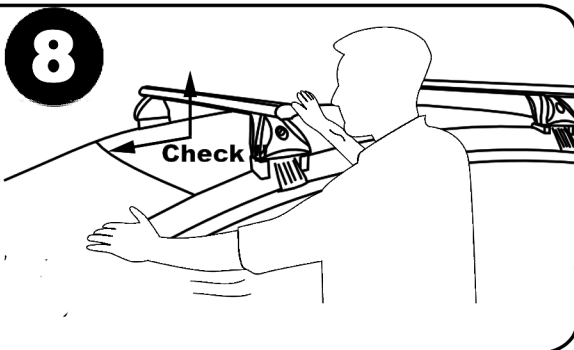
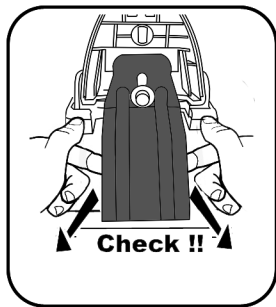
**Push**

OPTION 156.002

**F** Serrer alternativement chaque côté  
**E** Alternare il serraggio delle viti  
**I** Serrare alternativamente  
**P** Aperte alternadamente  
**GB** Tighten alternately  
**D** Die Schrauben abwechselnd anziehen

**NL** Afwisselend aan de linker en de rechterkant aandraaien  
**S** Dra åt växelvis  
**FIN** Kierrä vuorotellen  
**EST** Pinguldage vaheldumisi  
**LAT** Pielvelciēt pamāšus  
**LIT** Uzsukinkite pakaitomis  
**PL** Sruby dokrecaj naprzemiennie

**CZ** Pokretla bagaznika dokrecaj dokrecaj naprzemiennie  
**SK** Dotahujte striedavo  
**SLO** Privijajte izmenično  
**HR** Naizmjenično zategnite  
**HU** Egymástól függetlenül szorítandó  
**TR** Dönüşümlü sıkın



Démontage - Desmontaje - Smontaggio - Desmontagem - Disassembly - Demontage

