

TYPE A

Ref.: 156267



ISO/PAS 11154



CITY CRASH TEST



n° 267



Ford Fiesta V

5

11/2001->08/2008



5 kg + xx Kg = 75 kg max

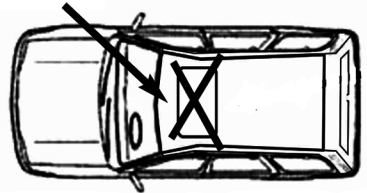
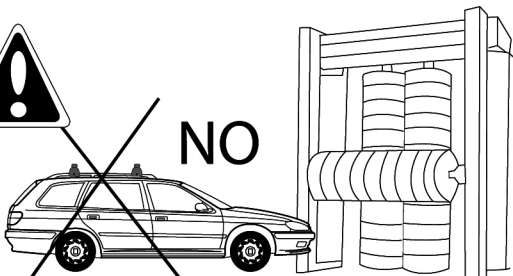
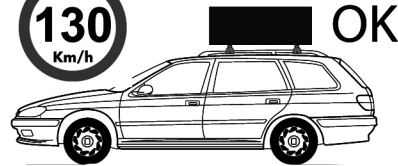
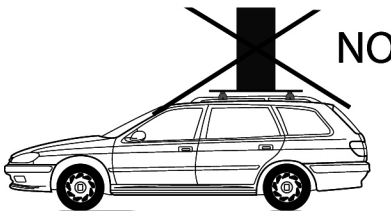
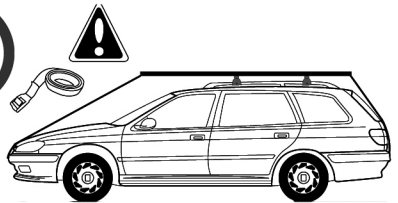
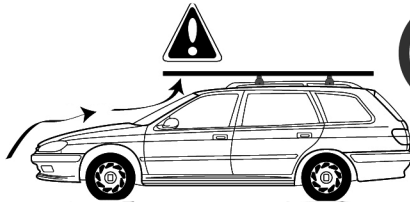
Ne pas dépasser la charge maximale des barres. Ne pas dépasser la charge maximale indiquée par le constructeur du véhicule

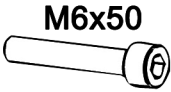
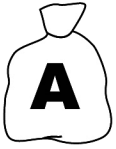
Non superare il carico massimo delle barre portattuto. Non superare il carico massimo indicato dal costruttore del veicolo

Carga máxima admisible indicada en la caja de las barras de techo. No exceda la carga máxima permitida por el fabricante del vehículo.

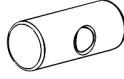
Maximum allowable load indicated on the box of roof bars. Do not exceed the maximum load allowed by the vehicle manufacturer.

Maximal zulässige belastung angegeben auf der box der dachreling. Überschreiten sie nicht die maximale belastung durch den fahrzeughersteller zugelassen.





M6x50
4762.650
x4



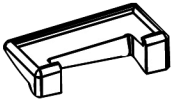
162100001
x4



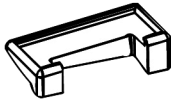
659106
x4



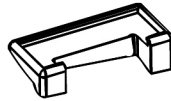
100005
x1



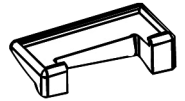
x1
1126701



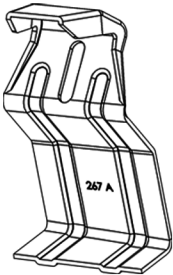
x1
1126702



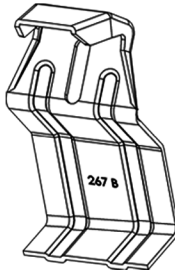
x1
1126703



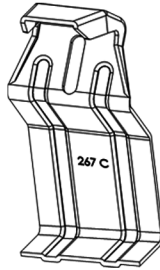
x1
1126704



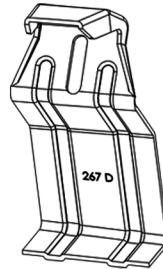
x1
267 A



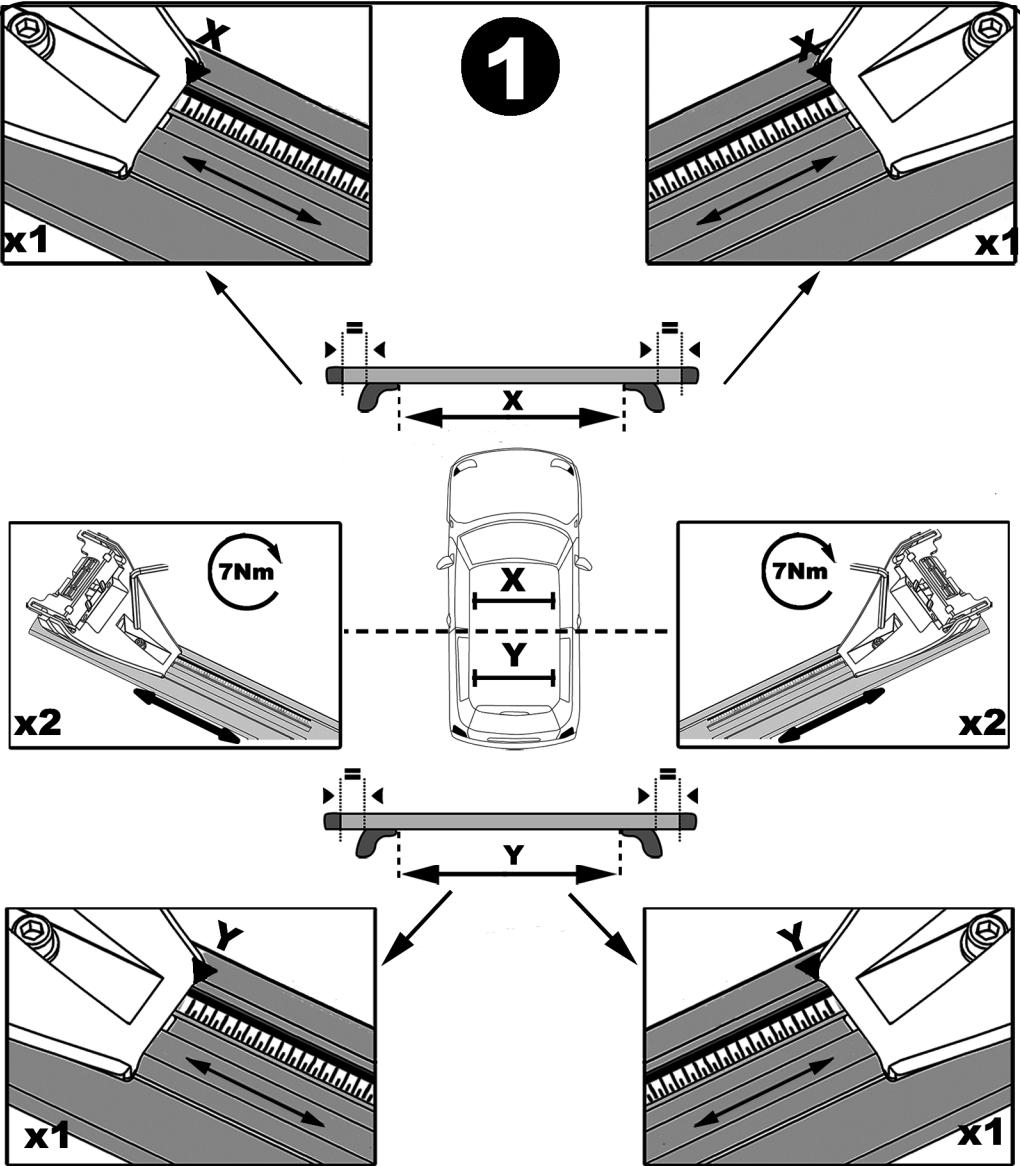
x1
267 B



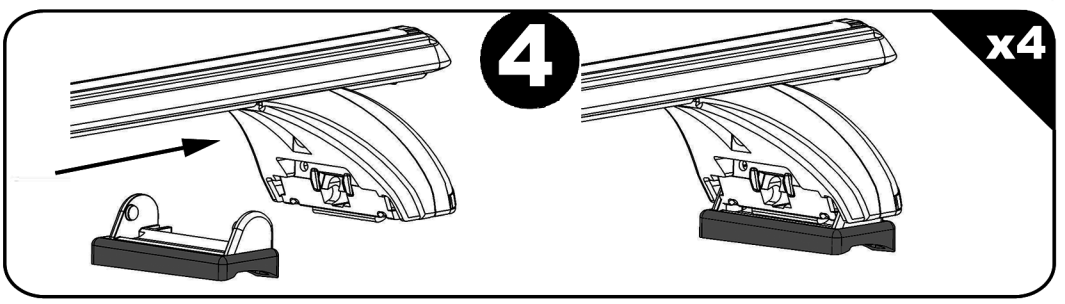
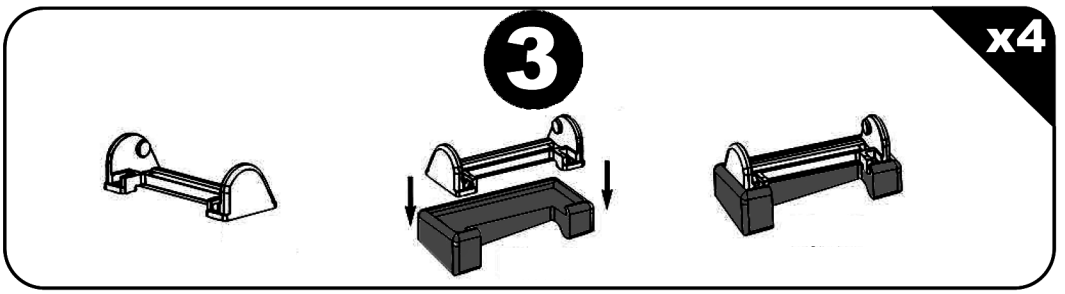
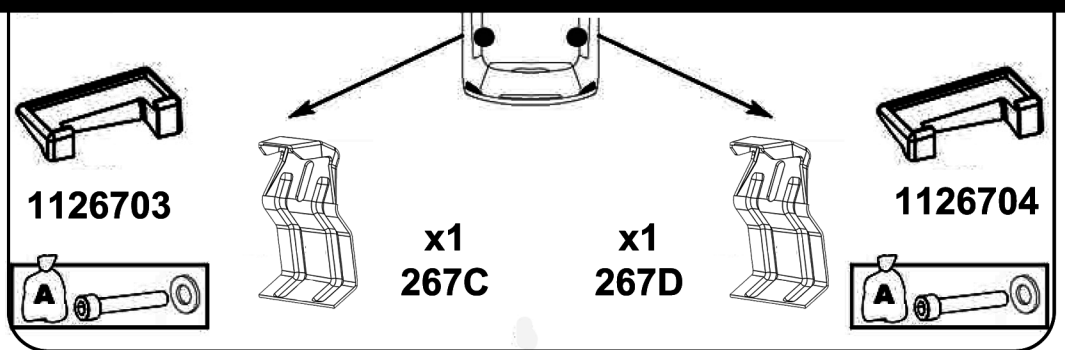
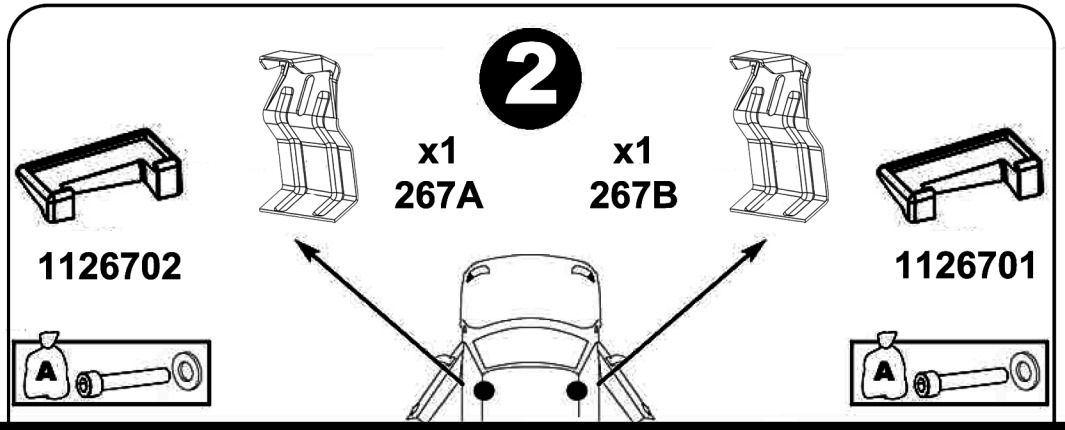
x1
267 C



x1
267 D



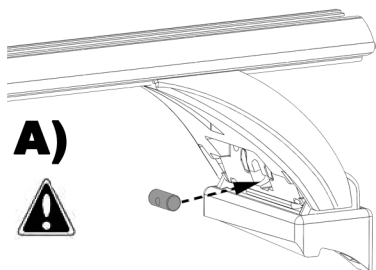
	X	Y
Ford Fiesta V	84,5 cm	80 cm



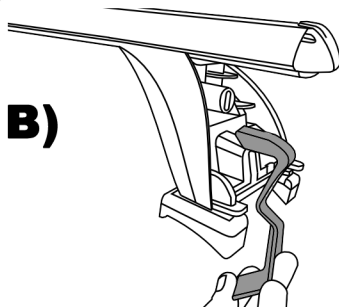
5

x4

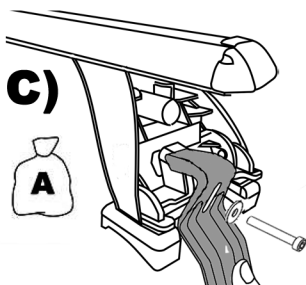
A)



B)

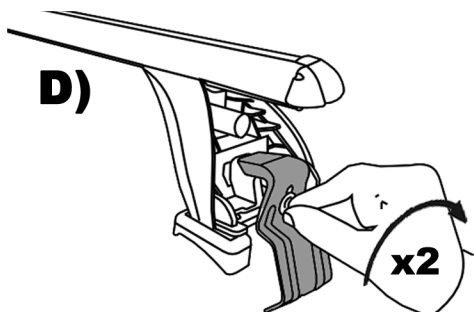


C)



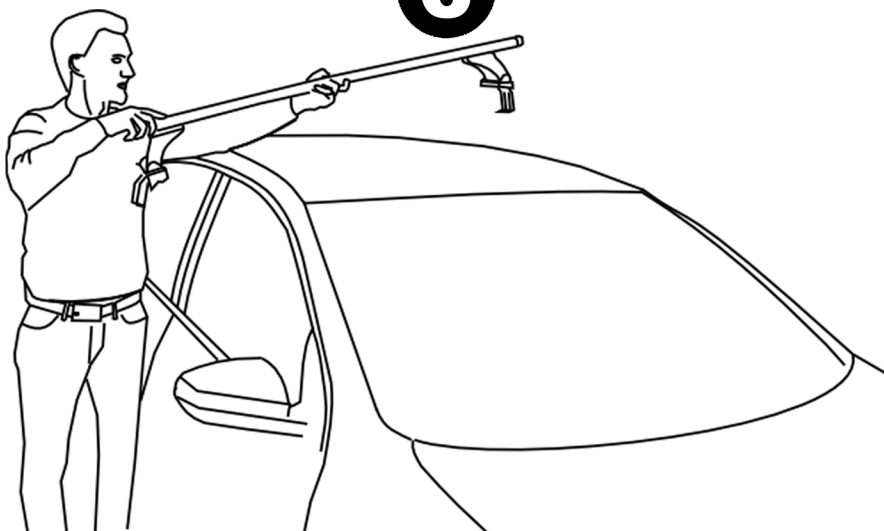
D)

x2

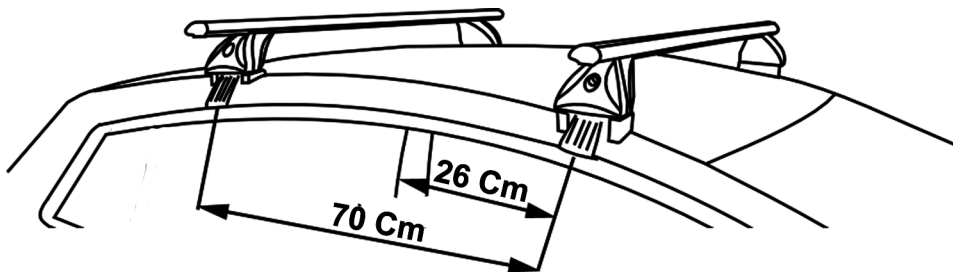


6

x2

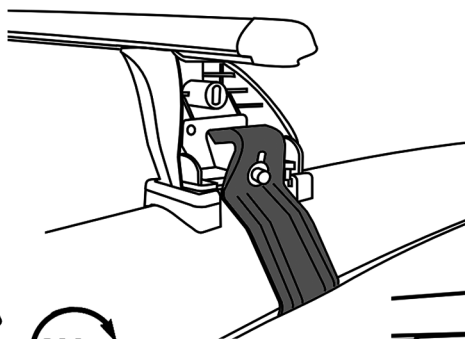


7



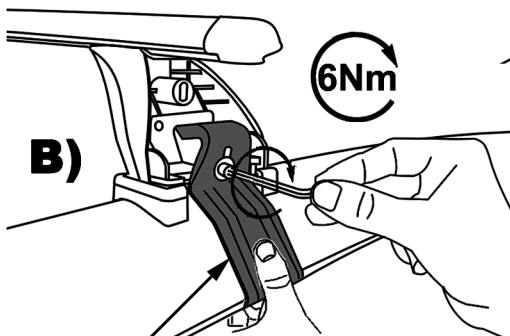
x4

A)

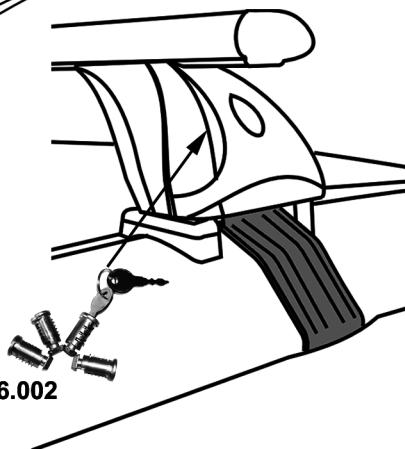


6Nm

B)



C)



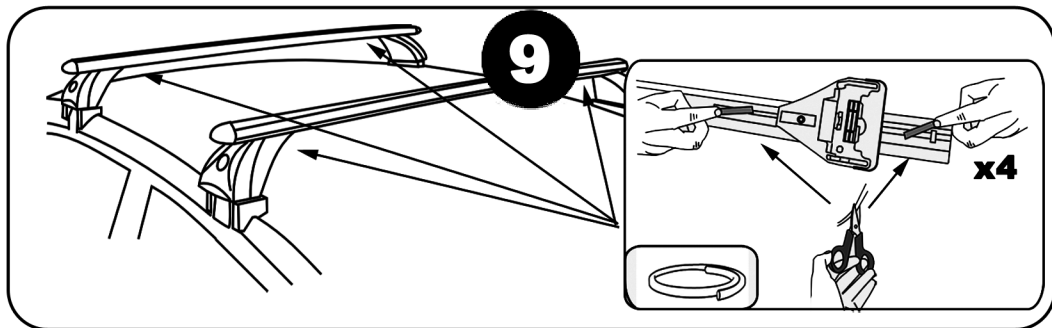
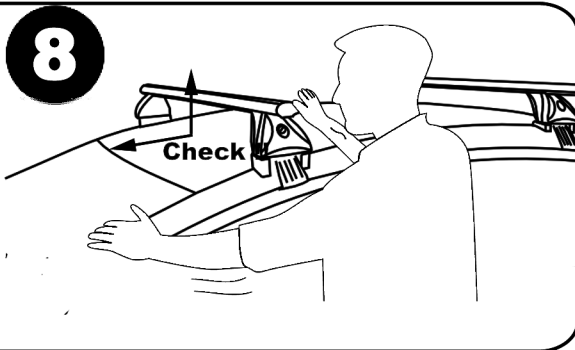
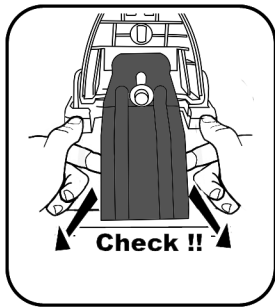
Push

OPTION 156.002

F Serrer alternativement chaque côté
E Alternare il serraggio delle viti
I Serrare alternativamente
P Aperte alternadamente
GB Tighten alternately
D Die Schrauben
 abwechselnd anziehen

NL Afwisselend aan de linker en de
 rechterkant aandraaien
S Dra åt växelvis
FIN Kierrä vuorotellen
EST Pinguldage vaheldumisi
LAT Pielvelciēt pamāšus
LIT Uzsukinkite pakaitomis
PL Sruby dokrecaj naprzemiennie

CZ Pokretla bagaznika dokrecaj dokrecaj
 naprzemiennie
SK Dotahujte striedavo
SLO Privijajte izmenicno
HR Naizmjenicno zategnite
HU Egymástól függetlenül szorítandó
TR Dönüşümlü sıkın



Démontage - Desmontaje - Smontaggio - Desmontagem - Disassembly - Demontage

