

TYPE A

Ref.: 156287



ISO/PAS 11154



CITY CRASH TEST



n° 287



Opel insigna

4

07/2008->



5 kg + xx Kg = 75 kg max

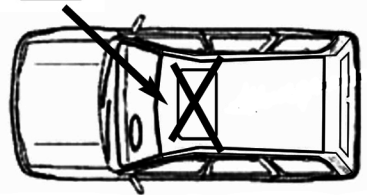
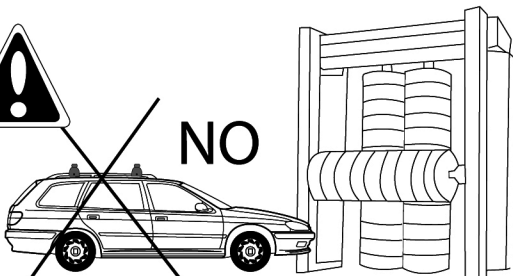
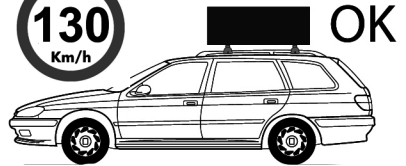
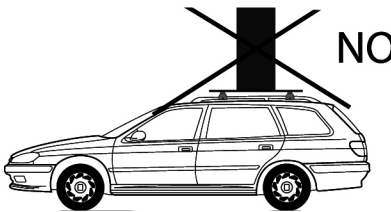
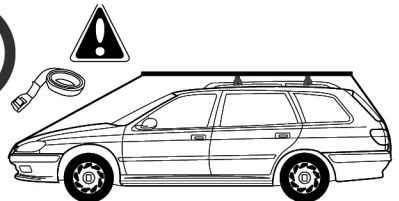
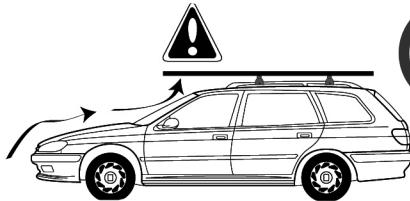
Ne pas dépasser la charge maximale des barres. Ne pas dépasser la charge maximale indiquée par le constructeur du véhicule

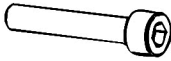
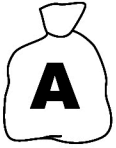
Non superare il carico massimo delle barre portatutto. Non superare il carico massimo indicato dal costruttore del veicolo

Carga máxima admisible indicada en la caja de las barras de techo. No exceda la carga máxima permitida por el fabricante del vehículo.

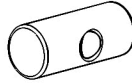
Maximum allowable load indicated on the box of roof bars. Do not exceed the maximum load allowed by the vehicle manufacturer.

Maximal zulässige belastung angegeben auf der box der dachreling. Überschreiten sie nicht die maximale belastung durch den fahrzeughersteller zugelassen.





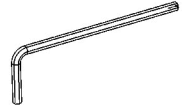
**M6x50
x4**



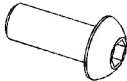
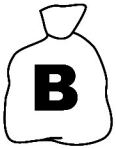
**162100001
x4**



**6591.06
x4**



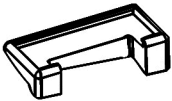
**100005
x1**



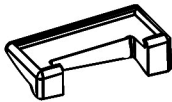
**M6x15
x4**



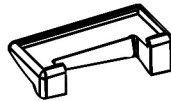
**100003
x1**



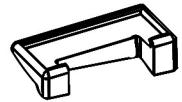
**x1
1125001**



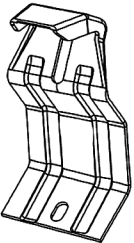
**x1
1125002**



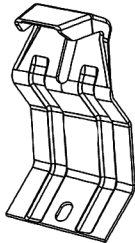
**x1
1122703**



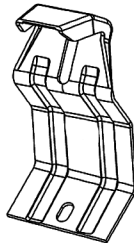
**x1
1122704**



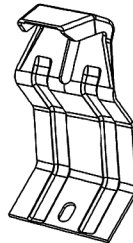
**x1
239A**



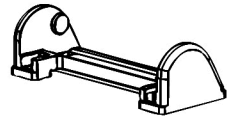
**x1
239B**



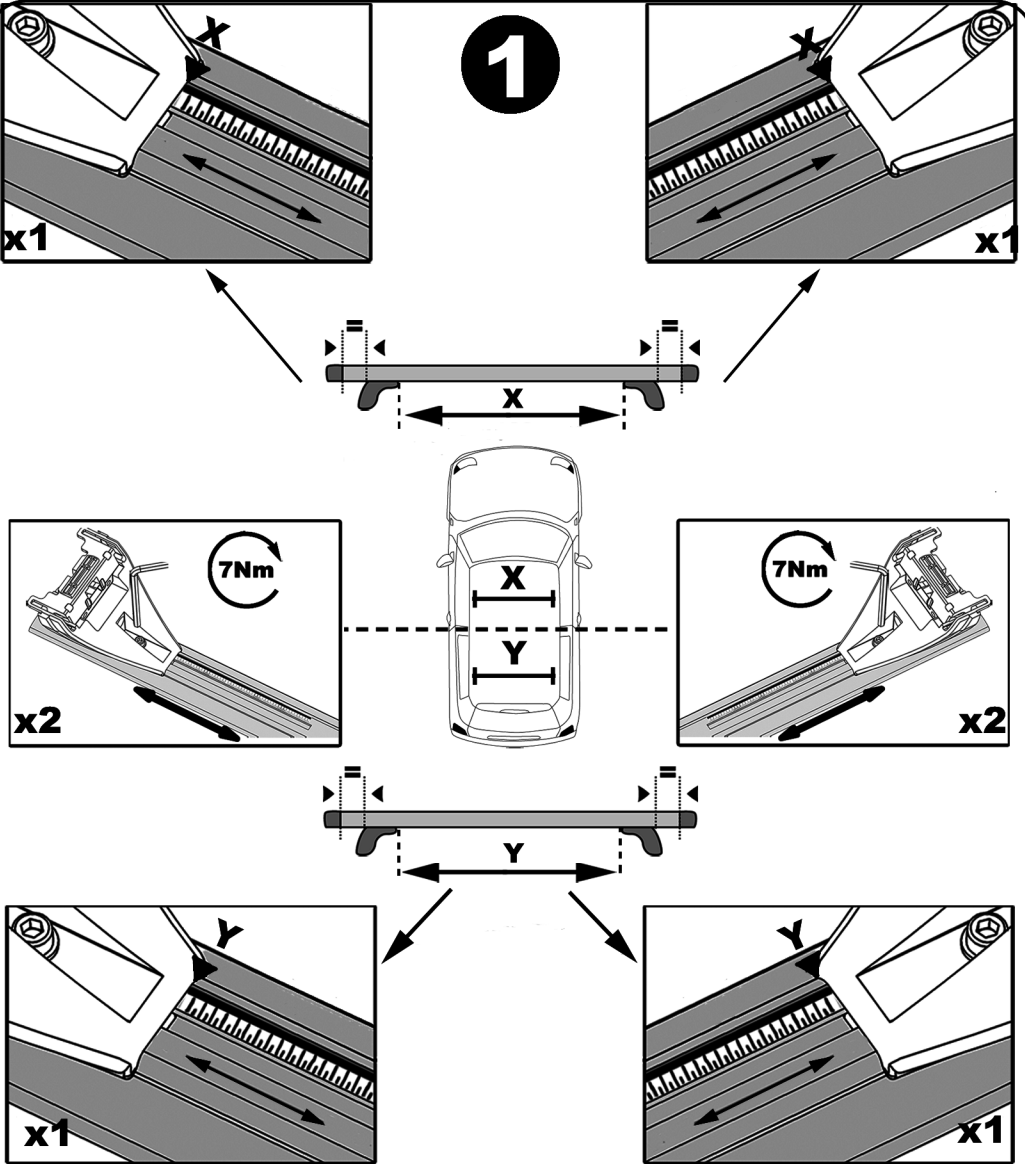
**x1
231C**



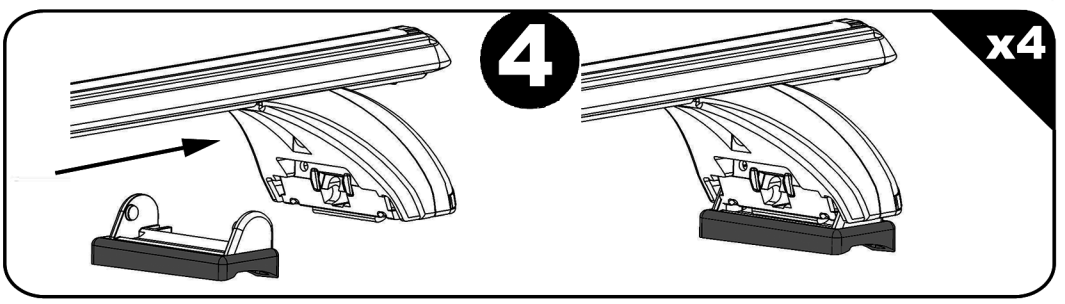
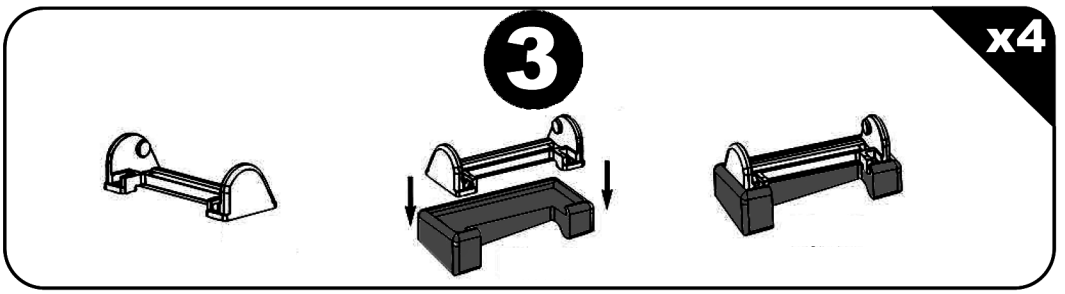
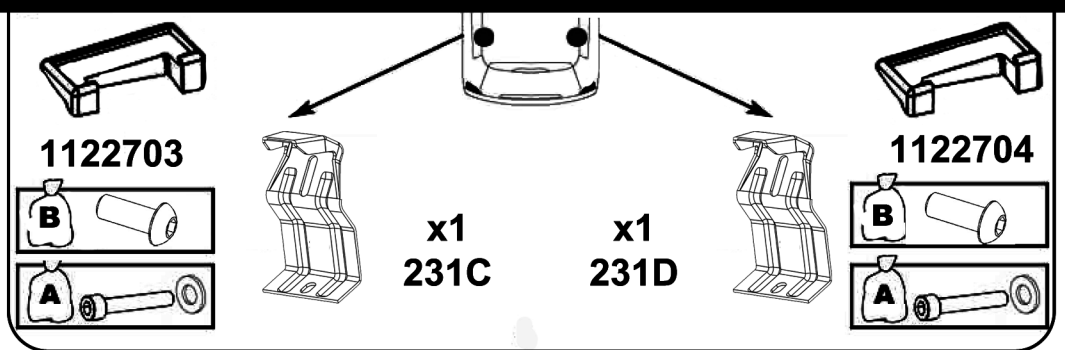
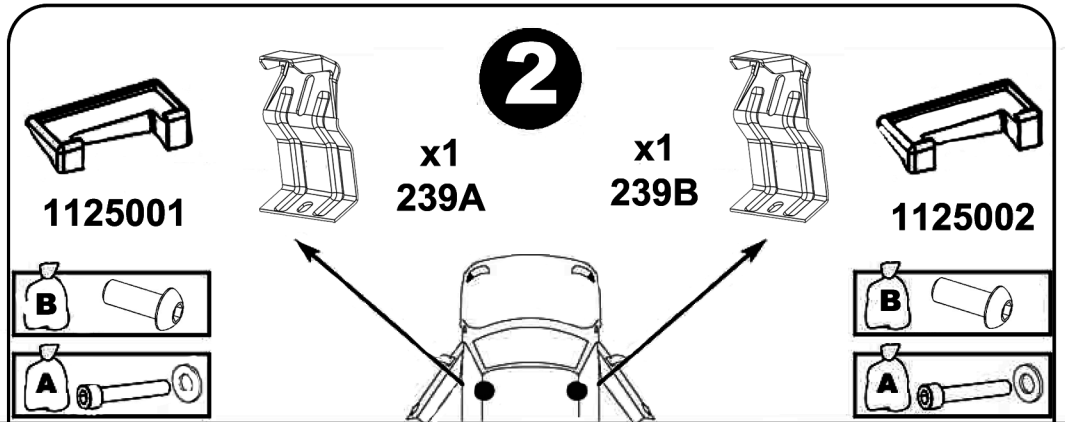
**x1
231D**



**x4
214800001**

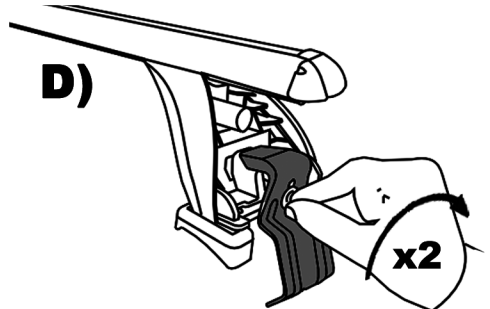
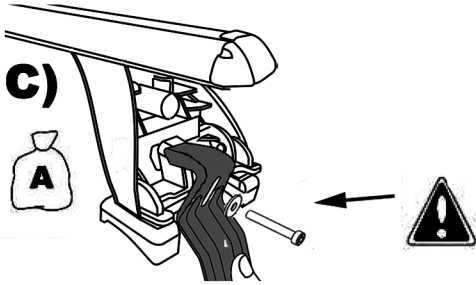
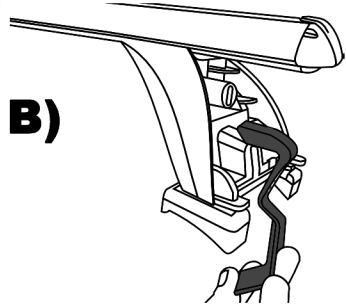
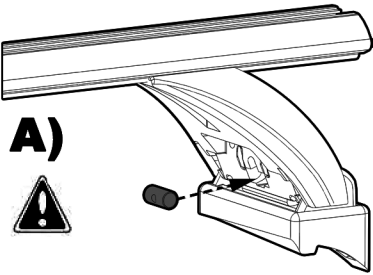


	X	Y
Opel Insignia	97 cm	90,5 cm



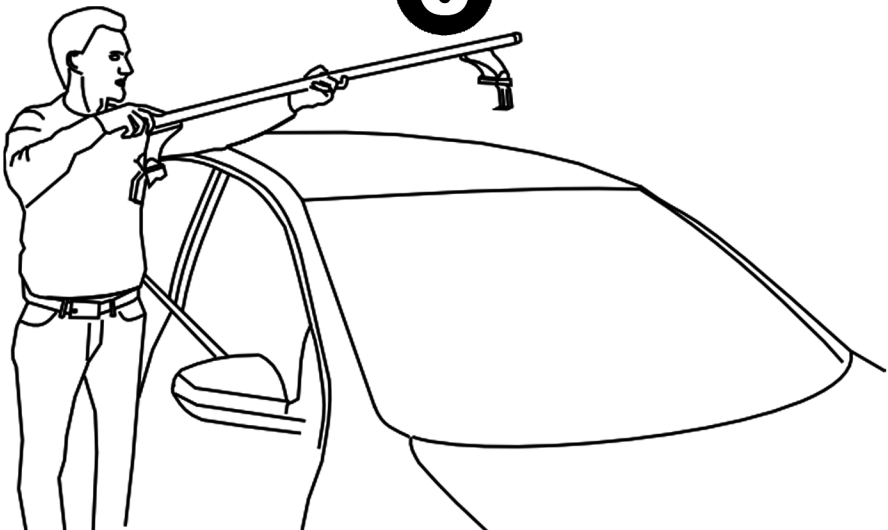
5

x4



6

x2

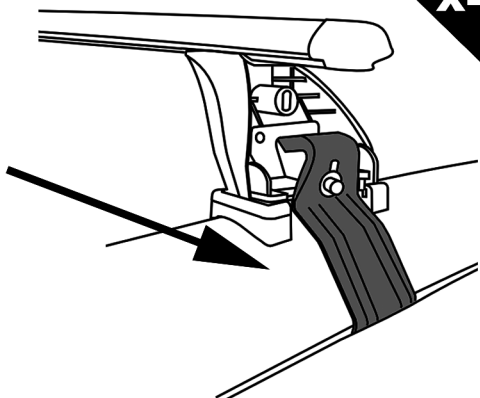
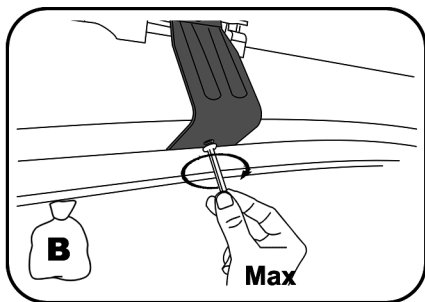


7



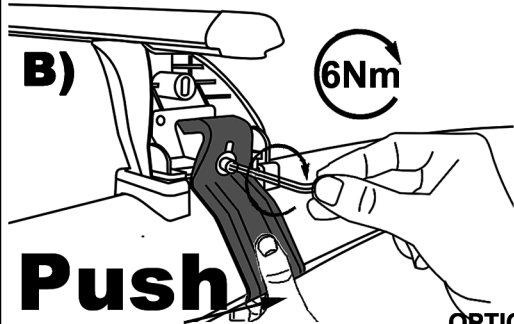
x4

A)

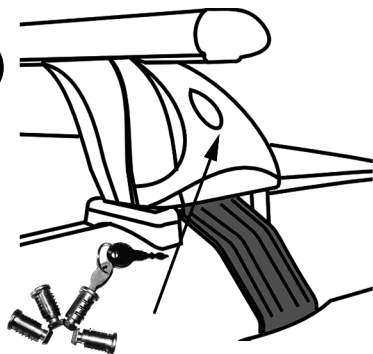


B)

6Nm



C)

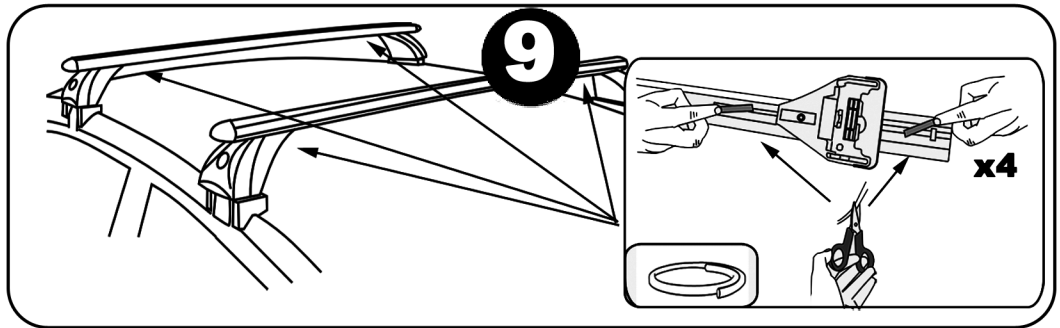
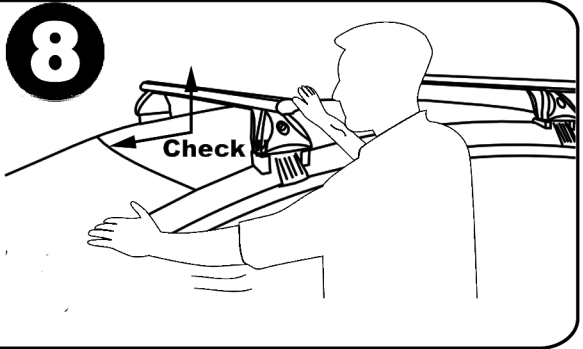
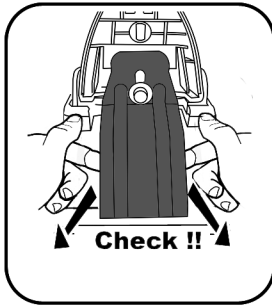


OPTION 156.002

- F** Serrer alternativement chaque côté
- E** Alternare il serraggio delle viti
- I** Serrare alternativamente
- P** Aperte alternadamente
- GB** Tighten alternately
- D** Die Schrauben abwechselnd anziehen

- NL** Afwisselend aan de linker en de rechterkant aandraaien
- S** Dra åt växelvis
- FIN** Kierrä vuorotellen
- EST** Pinguldage vaheldumisi
- LAT** Pielvelciēt pamāšus
- LIT** Uzsukinėkite pakaitomis
- PL** Sruby dokrećaj naprzemiennie

- CZ** Pokretla bagaznika dokrećaj dokrećaj naprzemiennie
- SK** Dotahujte striedavo
- SLO** Privijajte izmenicno
- HR** Naizmjenično zategnite
- HU** Egymástól függetlenül szorítandó
- TR** Dönüşümlü sıkın



Démontage - Desmontaje - Smontaggio - Desmontagem - Disassembly - Demontage

