

Ref.: 156292



ISO/PAS 11154



CITY CRASH TEST



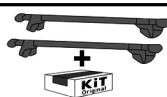
n° 292



SEAT Toledo
SKODA Rapid

4
4

01/2013->
12/2012->



5 kg + xx Kg = 75 kg max

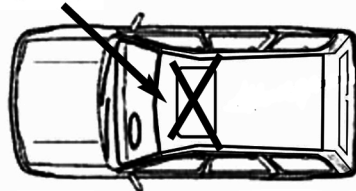
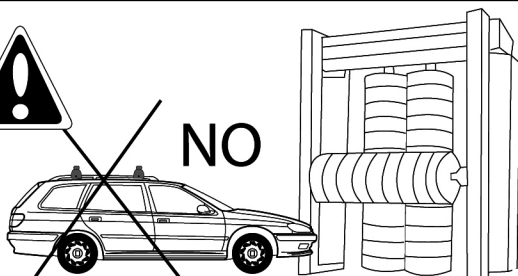
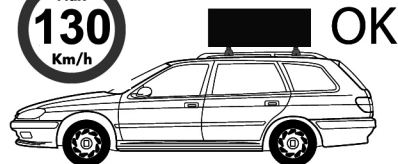
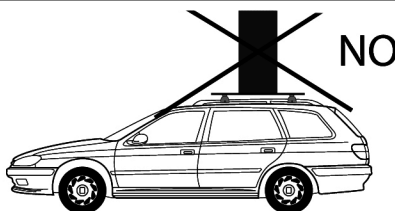
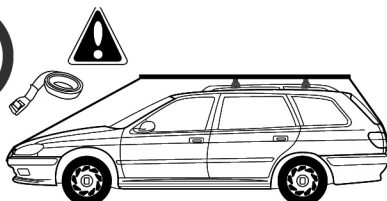
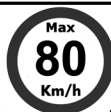
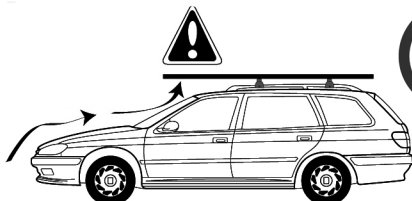
Ne pas dépasser la charge maximale des barres. Ne pas dépasser la charge maximale indiquée par le constructeur du véhicule

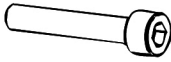
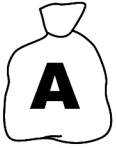
Non superare il carico massimo delle barre portattuto. Non superare il carico massimo indicato dal costruttore del veicolo

Carga máxima admisible indicada en la caja de las barras de techo. No exceda la carga máxima permitida por el fabricante del vehículo.

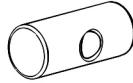
Maximum allowable load indicated on the box of roof bars. Do not exceed the maximum load allowed by the vehicle manufacturer.

Maximal zulässige belastung angegeben auf der box der dachreling. Überschreiten sie nicht die maximale belastung durch den fahrzeughersteller zugelassen.





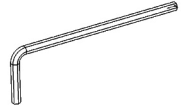
**M6x50
x4**



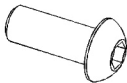
**162100001
x4**



**6591.06
x4**



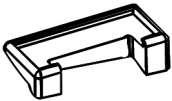
**100005
x1**



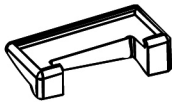
**M6x15
x4**



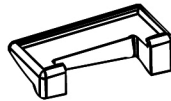
**100003
x1**



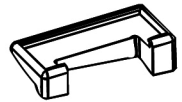
**x1
1121801**



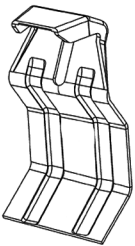
**x1
1121802**



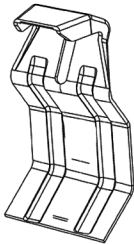
**x1
1121803**



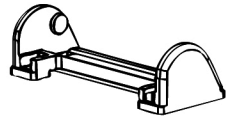
**x1
1121804**



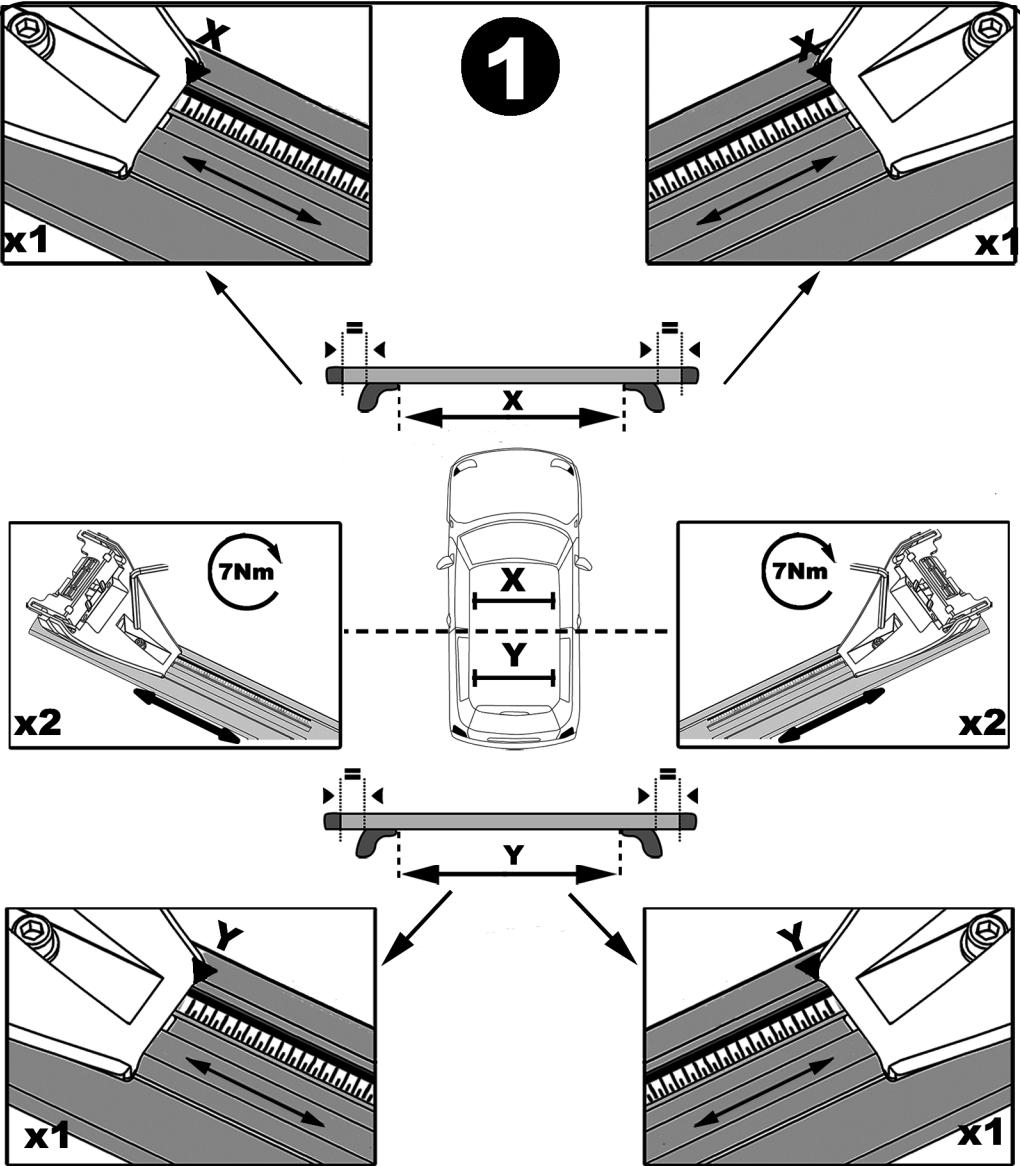
**x2
231C**



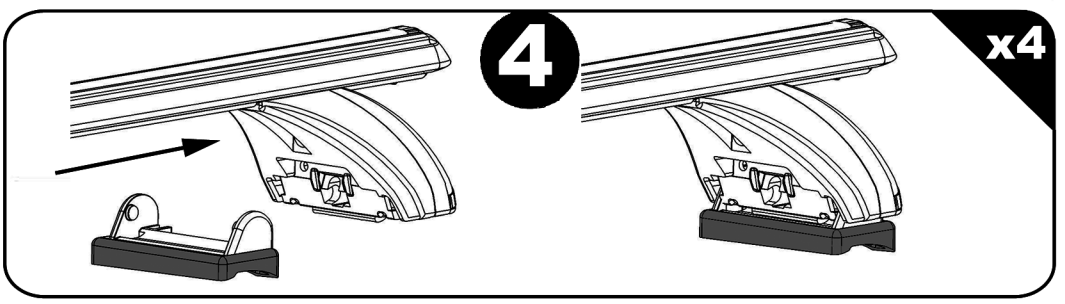
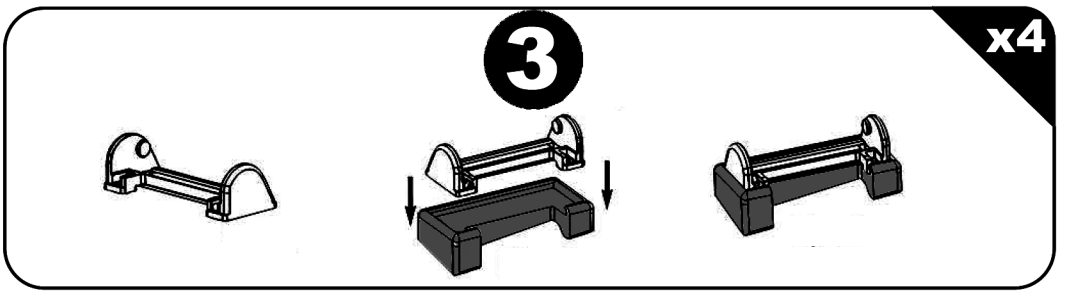
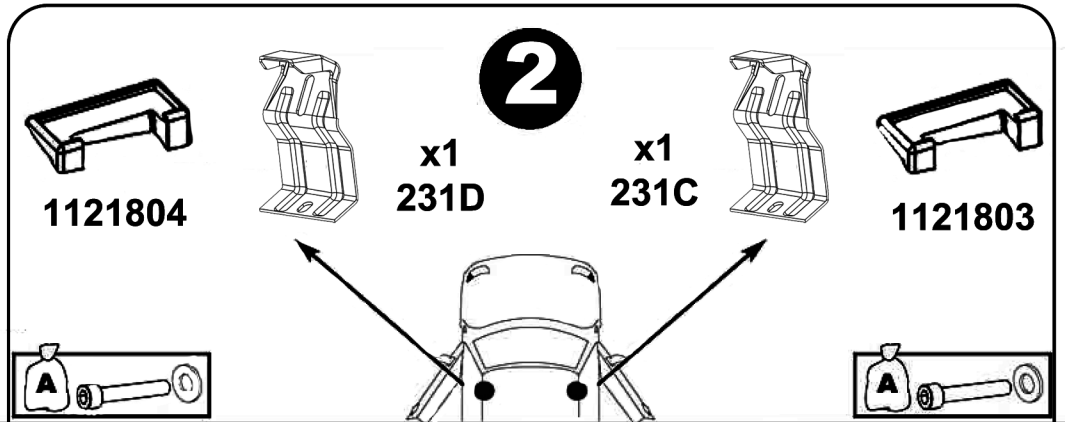
**x2
231D**



**x4
214800001**



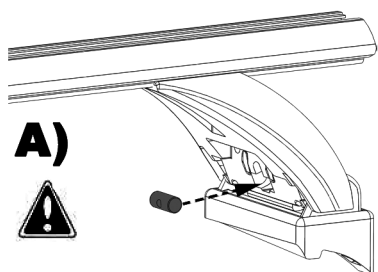
	X	Y
Skoda Rapid	91 cm	89 cm
Seat Toledo	91 cm	89 cm



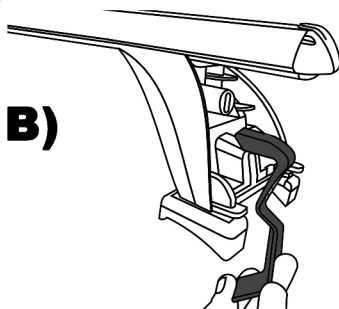
5

x4

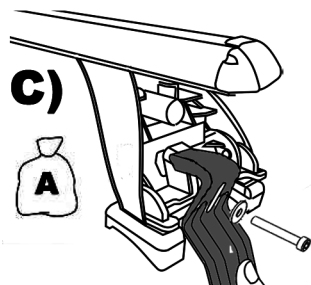
A)



B)

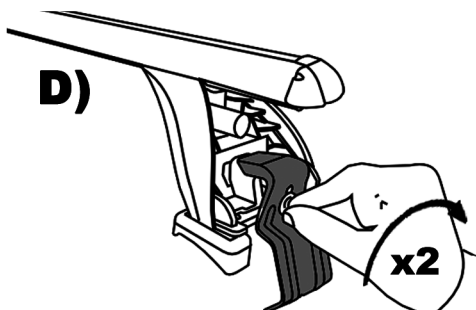


C)



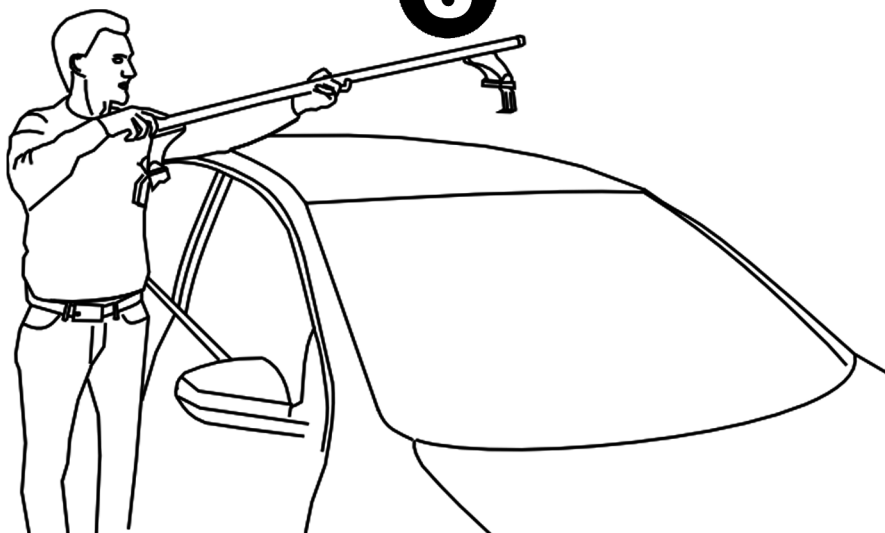
D)

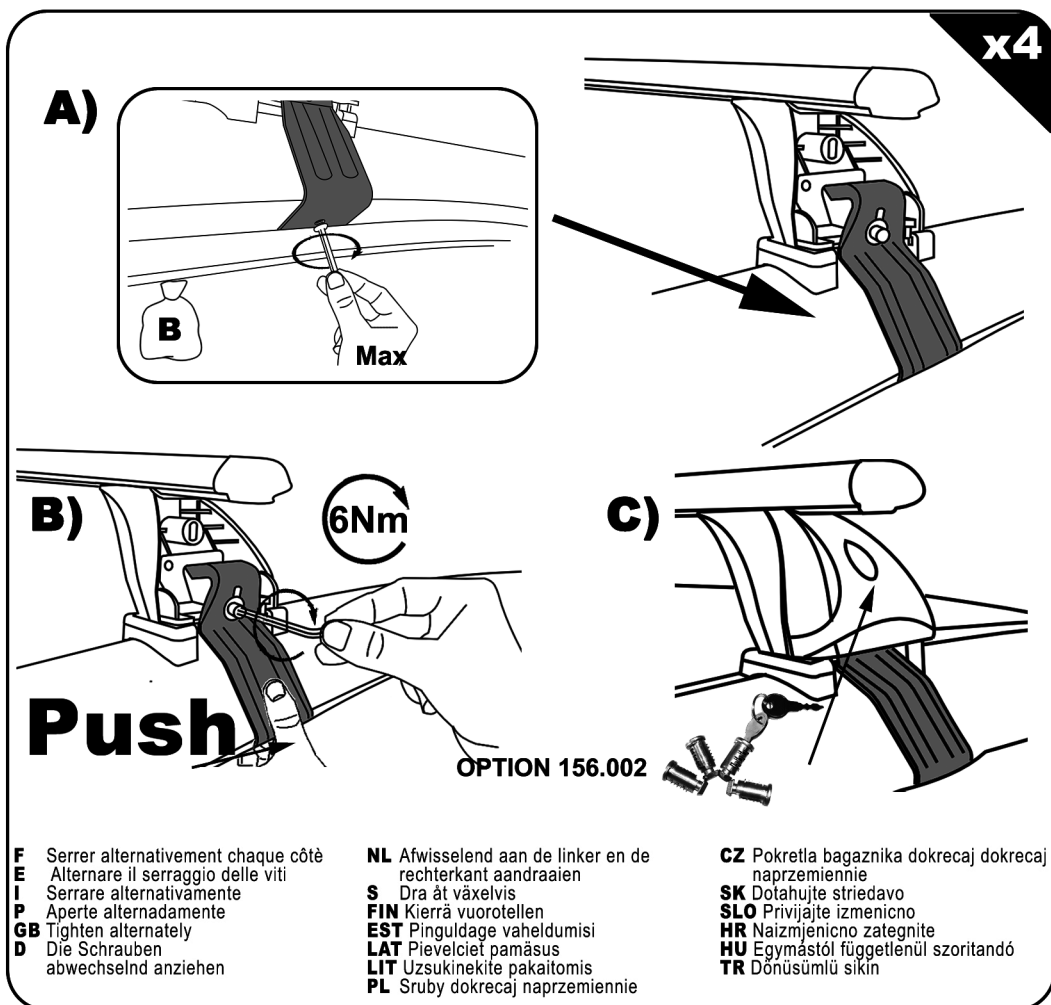
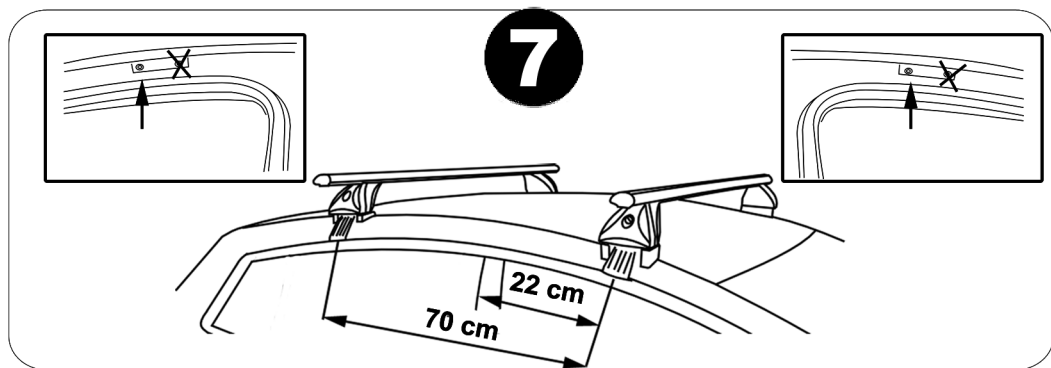
x2

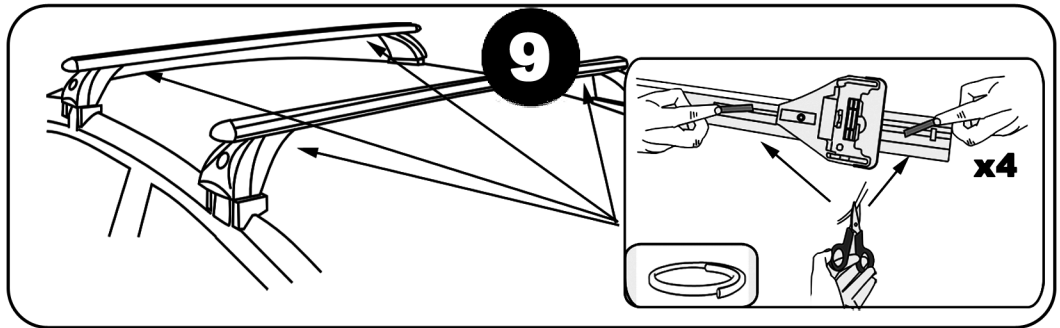
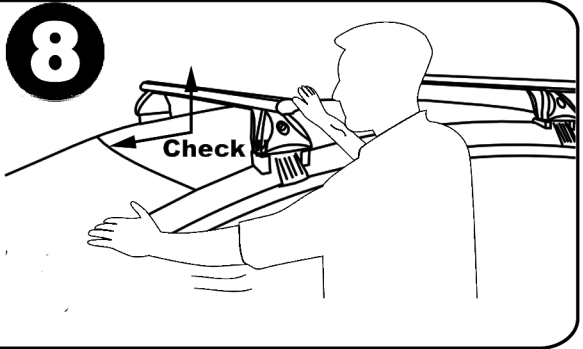
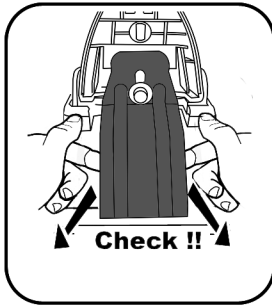


6

x2







Démontage - Desmontaje - Smontaggio - Desmontagem - Disassembly - Demontage

